



The Gateway.

A cruisers guide to the Bay of Islands in
New Zealand's beautiful Northland



Bay of Islands

Port Opua



Boatyard

New Zealand

Boat maintenance in paradise

World-class, high quality paint finishes.



FLOATING WORK BERTHS

Accommodating 20 boats up to 30 metres. Power and water to all berths.

TRAVEL LIFT

50 tonne capacity.
Maximum beam 5-2 metres.

HAULOUT TRAILER

60 ton capacity.
Maximum draft 2.3 metre, hauling Mono and Multi Hull vessels.

HARDSTAND

Sealed area for below water work.
67 Sites - short or long term.
Undercover workshop available.
Power and water to all sites.

ONSITE PAINTING

Total resprays, touch-ups.
Complete anti fouling services.

KITCHEN, ABLUTIONS, BBQ AND
PICNIC TABLES ON SITE.

CALL +64 9 402 7124
FOR A BOOKING OR MORE INFORMATION

40 trade services on-site

BAY OF ISLANDS MARINA

Unit 24, 7 Baffin Street - Port Opua - Bay of Islands, New Zealand
Ph: +64 9 402 7124 Email: enquiries@boimarina.co.nz

boimarina.co.nz

It is a full service marina with 450 berths including two superyacht berths. Liveaboards are welcome.

Marina facilities include hot showers, a visitors lounge, pump out facilities diesel fuel dock, wifi, and a playground. Marine services within walking distance include travel lift, haul-out and hardstand, catamaran haul-out, boat builders, riggers, painters, refrigeration, mechanics, electronics, chandlery, car hire, insurance, boat brokers, and storage facilities. There is also a general store for provisioning, a laundromat, takeaways, and café.

Opua is a five-minute drive from Paihia, which is the central hub for the Bay of Islands. It is 20 minutes from Kerikeri and the Bay of Islands Airport, and a short water crossing to historic Russell.

Welcome to
Bay of Islands Marina,
the primary Port of Entry
into New Zealand.



Bay of Islands Marina

28A Baffin Street, Opua, New Zealand

P: +64 9 402 5659 **F:** +64 9 402 6124

E: enquiries@boimarina.co.nz

VHF: Ch73 **Call Sign:** Bay of Islands Marina

For a comprehensive list of facilities and services turn the page.

CALL +64 9 402 7124

VISIT OUR WEBSITE BAYOFISLANDSMARINA.CO.NZ

MARINA SPECIFICATIONS

Berths	450
Sizes:	From 10.5 to 50 metres.
Draft:	Minimum 2.5 metres inshore low spring tide
Mast height restrictions:	None
Charges:	Varies per berth size - daily, monthly
Swing moorings:	35
Potable water:	All berths
Live aboards:	Welcome
Power:	240 volt, 50Hz, 16amp, 3 pronged marina type 67 3 pronged marina type 67 blue male connector. Electrical Warrant of Fitness required.

Seasonal rates apply. Call us or visit the website.

MARINA SERVICES

Haul Out & Repair Services

Marina travel lift (50T), floating work jetty, catamaran haulout trailer (60T), professional boatbuilders. Phone or email for bookings.

Service Providers within

Opua Marine Park

Boatbuilders, painters, joiners, engineers, electricians, riggers, sailmakers, chandlery, upholsterer, refrigeration, rental cars, motor mechanic, stainless steel fabrication, aluminium fabrication, marine insurance, yacht sales, canvas.

Security & Lighting

Gates locked. Access with security key, which also provides access to all facilities. Night time security patrols. CCTV security cameras oscilating 24/7.

Fuel

24 hour card service at diesel floating dock accepts EFTPOS and credit cards with a PIN number. GST exempt available for departing offshore vessels.

Marina Facilities

Showers, toilets, laundry, rubbish disposal and recycling facilities, waste oil container and used battery drop-off point. Storage units, BBQ area and playground.

Dinghy Rack & Boat Ramp

Adjacent to the Boatramp.

Marina Office Services

Power cords and plugs, fuel, bus service, faxing, photocopying and Customs outbound packs.

GST EXEMPT RATES FOR OFFSHORE CRUISERS

Food & Alcohol

General store, cruising club and cafes near marina.

Duty Free 5 minutes from marina.

Shopping centres: Paihia, 10 minutes by car, Kerikeri, 30 minutes by car, Whangarei, 1 hour by car.

Sewerage Pump-out

On fuel dock - free of charge. Universal fittings, water available.

Postal Services

Mail delivered to marina office for all vessels including courier delivery and pick up.

Public Transport

Taxi service. Shuttle bus to Bay of Islands airport. Bus service and ticketing in marina office to Whangarei, Auckland and onwards.

Bank & Cash Facilities

Bank, Paihia 8 kms. Cash facilities available from Marina Office.

Schools

Primary school, 200 metres walk. Seconadry school, 20 minutes by bus.

A&E Centre, Doctor, Dentist

Paihia, 8 kms.

Car Parking

Parking available through marina office.

PORT OF ENTRY

The marina provides a free service including MPI restricted foodstuff disposal. The quarantine area is on the northern end of the marina, inside the outer breakwater.

FOR CUSTOMS

Contact Customs 09 402 7231 or visit www.customs.govt.nz

FOR MINISTRY FOR PRIMARY INDUSTRIES

Contact 029 602 1669 or visit www.biosecurity.govt.nz

BAY OF ISLANDS MARINA, 7 Baffin Street, Opua, Bay of Islands, New Zealand

P : +64 9 402 7124 F : +64 9 402 6124 E : enquiries@boimarina.co.nz

VHF: Ch73 Call sign: Opua Marina

bayofislandsmarina.co.nz





Contents

FEATURES

- 7. Kia ora & Welcome - Faces of Opua
- 10. Sailing in Paradise
- 16. Message from the Harbourmaster
- 19. Bay of Islands Cruising Festival 2023
- 27. Northlands Top 10 Must do's
- 39. Fishing in the Bay of Islands
- 49. Buying and Selling with 36 Degrees Brokers

INFORMATION

- 3. Bay of Islands Marina Facilities
- 15. Fishing, boat ramps, clubs, and amenities in Northland
- 18. Weather, Tides & Emergency Services
- 22. Bay of Islands Events
- 24/25. Bay of Islands Marina Map
- 43. Explore Urupukapuka - Walking Tracks

CRUISING GUIDES

- 28. Bay of Islands
- 30. Roberton Island
- 32. Moturua Island
- 34. Urupukapuka Island
- 36. Te Hue Bay

YACHT CLEARANCE PROCESSES

- 44. Arrival Guide
- 46. MPI Biosecurity Information

DIRECTORY/SERVICES

- 54. Passenger Ferry service - Paihia - Russell
- 55. Medical Services
- 56/57. Bay of Islands Marina Directory



Gulf Group

Marine Brokers Ltd

INTERNATIONAL YACHT SALES BROKERAGE

Specialising in marketing cruising vessels internationally throughout New Zealand and the South Pacific.

Advise on vessel importation, customs, duty & taxes.

Vessel caretaking & monitoring, experienced skippers & crew for deliveries locally and internationally.

See our boats on:



Contact:

Jason Brosnahan

Qualified Marine Yacht Broker

National Certificate Marine Brokerage

Ph: +64 9 402 7103

Email: jasonb@gulfgroup.co.nz

New Zealand's Largest Marine Brokers

Gain maximum buyer awareness for your boat with high profile marketing with New Zealand's leading marine brokerage for new and used boats.

www.gulfgroup.co.nz

Northland, Auckland, Tauranga, Wellington, Picton, Nelson, Christchurch



With 12 branches throughout New Zealand, Gulf Group offers you all these services

- buying • selling • insurance
- finance • valuations • sales berths
- advice for overseas yachts

Kia ora & welcome

New Zealand's first port with a thriving community, sheltered anchorages and excellent holding makes Opuia the ideal destination. At Bay of Islands Marina, you will find a modern 450 berth marina, haul-out facilities including 50-tonne travel lift and 60-tonne catamaran haul-out trailer, as well as a full complement of marine services. All located within easy walking distance to enable you to do everything from antifouling your boat, to a complete refit, with places to stop for coffee in between.

Bay of Islands Marina is located in the heart of the Bay of Islands; some of New Zealand's premier cruising grounds with world class fishing, top dive sites, hiking trails and cycle tracks.

Bay of Islands Marina is preferred for a range of reasons, not just that the clearance facilities are provided free of charge, but for their quality location. The quarantine berth is located on the northern end of the vast floating attenuator of the marina. A portion of this is specifically allocated to clearing vessels and can take up to 20 yachts at any one time. Customs officials clear all boats on this facility. One of the recent additions to the services has been a floating toilet designed specifically for visitors who overnight on the quarantine facility. During peak season Bay of Islands Marina's Ambassadors' will be on the quarantine wharf to welcome you to New Zealand.



Mike Levings
Chairman Opuia Business Association

The OBA was formed to bring businesses together and grow the community and promote the marine services on offer. The 2023 Chairman Mike, is also the owner of Total Yacht Care, so if you see him around Opuia make sure to give him a wave!



Chris Galbraith
General Manager Bay of Islands Marina

Chris is passionate about promoting Northland to the world and has been instrumental in growing the marina to its current success today.

INSURE YOUR DREAM

Whether it's blue water, coastal, third-party or travel-medical insurance, we'll help protect what matters most to you.

Get a quote today:
www.themarinashop.com

The Marina Shop
Marine Insurance

THINKING OF SELLING YOUR BOAT?

Feel free to contact Ron Mossman for a no obligation chat

Contact Ron at: +64 272 960 065 | ron@spboatsales.co.nz | www.spboatsales.co.nz

- ✓ Specialist knowledge about the process of selling a foreign flagged vessel in New Zealand
- ✓ Friendly, Personalised and Professional Service
- ✓ Integrity, Enthusiasm, Initiative



**SOUTH PACIFIC
BOAT SALES**

About the Bay of Islands

A diverse and sophisticated destination, the Bay of Islands is far more than a region of abundant natural charm.

Its subtropical climate lends itself to a diverse range of all-year outdoor pursuits (wonderful walks and ultra-challenging international standard golf courses, for example), but there are many other fascinations, including a rich and extraordinarily well-preserved history and a burgeoning arts and cultural industry.

The Bay of Islands can justly be described as the cradle of the nation. At Kerikeri, the country's first mission station has left a precious legacy in Kemp House and the Stone Store, our oldest stone and wooden buildings. The Treaty House of Waitangi is a symbol of nationhood and partnership, while across the bay, Russell, our first capital, retains its original charm.

Whether you choose to stay on your boat, or experience a range of accommodation options from luxury lodges to character B and B's, or comfortable backpackers, you can be assured of a warm welcome and the hospitality accorded to long-lost friends.

There's plenty to see and do in the cruising grounds of the Bay of Islands. With 144 islands and a host of beautiful beaches and anchorages to explore, it really is a cruisers paradise. There's a regular ferry service over the Summer months from Paihia to Urupukapuka Island, where campgrounds and a café/restaurant make a unique setting for cruisers, tourists, and locals alike. World class big game fishing is a feature of the summer months, but huge snapper and other coastal species are a lure for anglers all year round.

Wonderful restaurants and cafes abound on the mainland, with award winning wineries, cheese and confectionary makers and outlets. Featured in these establishments are works from top artists and craftspeople, adding to the overall experience the picturesque Bay of Islands provides.

The Vava'u Island group in the Kingdom of Tonga
Year-round climate suitable for swimming, snorkeling, diving and sailing. Some islands are ringed by white sand beaches while others have tropical forests, sea-level caves, and dramatic limestone cliffs with breathtaking vistas.

vavau.TO

Online guide to Tonga



A smiling couple is shown in profile, looking out over a coastal town and a body of water. The woman has long blonde hair and is wearing a light blue shirt. The man has short blonde hair and is wearing a white shirt. They are sitting on a sandy beach. In the background, there is a coastal town with houses and trees on a hillside. The water is a clear blue. The sky is clear and blue. The overall scene is bright and sunny.

Kia ora and Welcome to Sailing in Paradise!

Sailing into the clear blue waters of northern New Zealand waters will bring a sense of blissful accomplishment - and make every mile you've travelled instantly worthwhile!



New Zealand is the strong and sturdy anchor to the South Pacific, providing a safe sailing haven where you will find first class marine services and a relaxed and comfortable lifestyle among soon-to-be-made friends.

Offshore sailors are welcomed from the moment they arrive into New Zealand waters and you will start to discover that this warm and welcoming hospitality is simply a part of the world-renowned 'Kiwi' experience, to be extended to you wherever you travel throughout the country.

Starting with a friendly greeting from our customs team, you will feel at home before you even reach your mooring.

And once ashore, we know that after all those long days at sea, there's nothing more appealing than a relaxing hot shower, fully equipped laundry, comfortable cruisers lounge and wifi to let friends and family know you made it! We want you to feel right at home, and our friendly team are there to help you with anything from where to get boat parts and repairs to where to buy delicious fresh food, including meat, fruit and veggies.

Once you've had a chance to find your bearings and settle in, you will look around to find yourself in one of the most pristine natural environments in the world, with stunning coastline perfect for exploring once you've had a chance to catch up on your sleep and enjoy being back on terra firma for a day or two!



While most sailors plan on coming for a season or two, some love it so much they never leave!

We welcome every boat like an old friend, and before long you'll find yourself having a drink or two with the locals, who will want to regale you with their tall tales from the sea as well as hear all about your voyage. When you're ready to hit the water again, the settled weather conditions in New Zealand provide ample opportunity for fair weather sailing and the summer months from October to April are particularly enjoyable, especially in the warm, sunny north.

There are boundless choices for day or voyage sailing from the Bay of Islands or Whangarei.

This stunning marine playground with endless islands to explore, proffers a new adventure every day, complete with safe, accessible anchorages and clean sandy beaches around every corner. You'll enjoy refreshing swims from your boat and delicious seafood and fish that you're able to catch and collect along the

way. Or, if you prefer, with your mask and snorkel, you can experience Northland's underwater world up close, with an array of sealife to discover.

Throughout your travels across the Pacific, you will have also heard that New Zealand is renowned for exceptional boat building and marine services - so if you've arrived with any concerns about your vessel, you're in the right place. Whether you need a refit, rigging, haul-out or any onboard repairs, Bay of Islands and Whangarei both offer a full complement of marine services for all vessels, including catamarans and superyachts. Even better, friendly marina staff will point you in the right direction, so you'll know you're getting expert advice from reputable companies. This means you can enjoy exploring the local area, knowing your boat is in safe hands and will be ready to head back out to sea when you are.

While most sailors plan on coming for a season or two, some love it so much they never leave!

With the option of secure long or short term berths, you may find yourself wanting to stay a little longer than planned. But don't worry - you'll find everything you need - excellent healthcare, high quality public schools (if you're here with your family) and all the other services and amenities you might need, including well stocked supermarkets, dentists, hairdressers and an airport if you need to make a trip back home.

So, now that you've arrived, what to explore first, you ask? Northland is all about sunshine and warmth (even in winter we don't get below 5 degrees Celsius) and lush subtropical forests, with stunning walk and cycleways all over the region. Wherever you go, you'll find people keen to stop and chat, go out of



TASTE: Northland is home to a huge array of fresh, locally grown produce as well as wines, cheeses, breads and chocolates. Sample from a fantastic selection of cafes and restaurants, and enjoy great coffee, delicious meat pies and yummy 'fish and chips' in most towns.



EXPLORE: Northland is one of the most beautiful sailing destinations in the world, and on land there is just as much beauty to discover, with countless walking and cycling tracks, lush subtropical and ancient native forests and beautiful rivers and waterfalls.



DISCOVER: Waitangi in the Bay of Islands is known as the 'birthplace of the nation', with the whole region steeped in history, most notably the coming together of the native Maori and the European settlers. Enjoy learning about the incredible Maori culture and its influence on New Zealand today.

their way to give directions and perhaps even invite you home to share a meal. You'll be hard-pushed to find a crowd or a queue, and you'll be blown away by the delicious, organic, home-grown fruit, veggies and meat from the local markets, made even tastier after your time at sea!

Northland is a narrow land mass with two contrasting coastlines - the east being calm and sheltered and the west being exposed and wild. Everywhere you look, the view is different. Take a drive up the west coast and discover Northland's incredible, ancient kauri forests and on to Cape Reinga, where, according to Maori oral history, the spirits of deceased Maori leap into the ocean to return to their ancestral homeland of Hawaiki. Or take a trip up the east coast and enjoy one stunning sandy beach after another. Swim, walk, fish, surf, kayak or soak up the sun to your heart's content.

There's local artists and galleries dotted right across the region and to learn more about the history of Aotearoa New Zealand, look no further than Waitangi - the birthplace of our nation's history. Waitangi offers an in-depth insight into the captivating Maori culture and a chance to learn about the events that have shaped New Zealand into the country it is today.

New Zealanders enjoy a way of life unlike anywhere else in the world, and you will find yourself relaxing into the slow pace, open friendships and enjoying the clean, natural environment. In fact, the longer you stay, the more friends you will make and the harder it will be to leave!

We look forward to meeting you at Bay of Islands Marina!



Boat hull cleaning

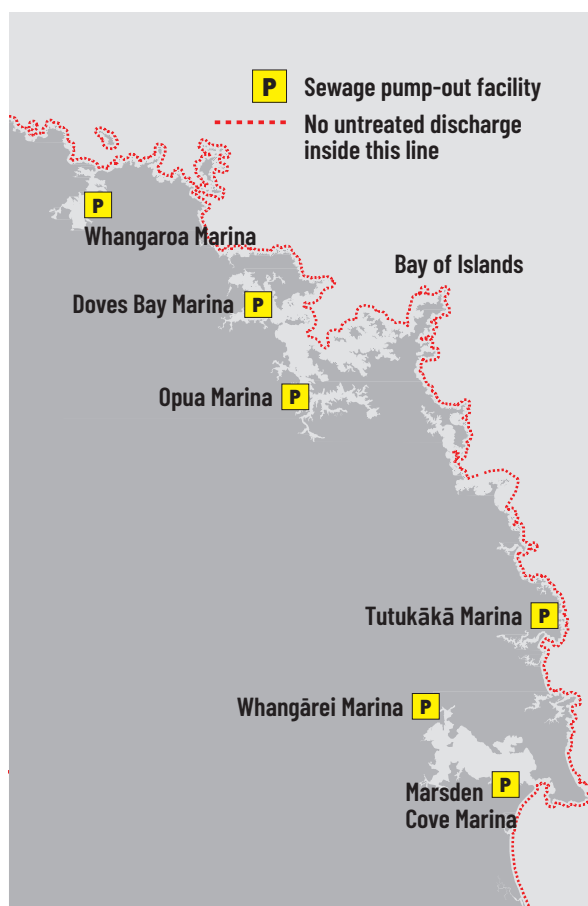
Hull maintenance and cleaning rules apply in Northland.

If in doubt, haul it out.

- » In-water cleaning can only be undertaken in certain areas and with no more than a slime layer. Cease and report immediately if you find marine pests.
- » No hull maintenance can be undertaken on the foreshore, including sanding, scrapping, blasting, and painting.

For the full rules which apply visit www.nrc.govt.nz/boatcleaning

Northland
REGIONAL COUNCIL



Northland's boat sewage rules

Do you have a way to treat or contain your boat sewage?

It's illegal to stay overnight on your boat in Northland without a proper way of treating or containing your sewage.

Northland's harbours and bays are strictly 'no discharge' areas for untreated waste.

The best options to comply are:

- » a working treatment system, or
- » a holding tank, or
- » a portable toilet

For more info www.nrc.govt.nz/marinepollution

Northland
REGIONAL COUNCIL
Te Kaunihera ā rohe o Te Taitokerau

Rhys is responsible for the day to day running of the Bay of Islands Boatyard. Rhys has been around the water all his life, and is a community minded person who holds roles in numerous club committees including Executive of the Bay of Islands Swordfish Club.

A former New Zealand Police member and Senior Customs Officer, Rhys is proficient with systems and safety, and brings a real team focus to the boatyard. He's always up for a chat, and looks forward to assisting boaties with their needs so they can get back out and enjoy the water.

You can contact Rhys at:
rhys@boimarina.co.nz
or call him on 027 246 9423.



Rhys Dempster

Information

Fishing, boat ramps, clubs & amenities in Northland

Boat Ramps

Bay of Islands

Jacks Bay	Concrete
Opito Bay	Concrete, all tide
Opua	Concrete, all tide
Russell	Concrete, half tide
Tapeka Point	Concrete
Rangitane	Concrete
Waipapa Landing	Concrete, all tide
Waitangi River	Concrete, all tide

Boat Clubs

Bay of Islands Swordfish Club

Paihia & Russell (Big Game Fishing)
<https://swordfish.co.nz>
(09) 403-7857

Bay of Islands Yacht Club

Waitangi Club rooms
<https://boiyc.org>
(09) 402 7897

Kerikeri Cruising Club & Marina

<https://kerikericruisingclub.org.nz>
(09) 407 9434

Opua Cruising Club

<https://opuacruisingclub.co.nz>
(09) 402 6924

Russell Boating Club

<https://russellboatingclub.org.nz>
(09) 403 7822

Amenities

Bay of Islands Marina

Refer to page 2 for information on fuel, water, showers, sewerage etc...

Or visit:

www.bayofislandsmarina.co.nz

Visit www.nrc.govt.nz/onthewater to find:

- Rules for using our harbours and coast
- Marine reserve details
- Weather and tide information

Message from the Harbourmaster

Haere mai, and welcome to some of the best cruising waters in New Zealand.

I've been asked to provide an update to the latest Gateway Magazine and was amused to see that I was last talking about an incredible cruising summer and worst drought on record in 19/20. In stark contrast, this Summer has seen some significant weather events including Cyclone Gabrielle, which pose a good reminder to boaties to familiarise themselves with weather patterns and check forecasts when cruising these waters.

Weather can drastically change here, and we still regularly see yachts having crossed the Pacific anchor in front of Opua to get supplies, who have found their vessel adrift or dragging anchor once the tide has come in with the afternoon sea breeze. Please check depths, tide, and allow for the sea breeze when anchoring and put enough cable out. Please book a mooring or marina berth if you are going on a road trip holiday or exploring further inland for an extended period of time – don't leave your boat at anchor.

Anywhere in New Zealand the speed limit on the water is 5 knots within 200m of the shore. So that includes heading from your yacht to the Opua Cruising Club for a drink. The beer will still be cold when you get there a few minutes later.

On a serious safety point, the Bay of Islands is now open to cruise ships, which come to anchor in the bay and tender passengers ashore. Rules in New Zealand require any vessel under 500GT to keep out of the way of any vessel over 500 GT. This means you in your yacht, not tacking just in front of an incoming cruise ship and crossing the bow just in time. Some of these vessels are 350 meters long and move deceptively fast. And they don't have many options to alter course with almost 10m of draft.

You might find our wave data buoy useful. It is installed outside of the harbour, North of the Ninepin rock. Go to www.nrc.govt.nz and enter 'Wave' into the search box. The buoy will give you live readouts of wind and wave data on the coast. This can be handy when deciding on a coastal cruise from the shelter of the marina.

Our harbourmasters team maintain the buoys and beacons, deal with wrecks, oil spills, and water safety. Any concerns you can call us on 0800504639 or email info@nrc.govt.nz.

Thanks for reading and have a safe and enjoyable time on the Northland Coast.

Nga mihi nui

Jim Lyle

Regional Harbourmaster Northland

Clean below? Good to go!

Clean hulls stop the spread of marine pests. Make sure you know the rules for where you're cruising - visit www.marinepests.nz

Northland
REGIONAL COUNCIL
Te Kaunihera ā rohe o Te Taitokerau



Who to contact if there is a problem

For visiting yachts, knowing who to call when there's a problem or how to get local information can be confusing as it differs from country to country. Here's a summary of who's who in New Zealand.

Maritime New Zealand is the government agency with overall responsibility for boating safety in New Zealand.

Maritime Radio maintains VHF and HF radio services for our coastal waters and the South Pacific, providing around the clock monitoring for distress messages. It monitors VHF Ch. 16.

Search and rescue (SAR) has several agencies involved.

- **The Rescue Coordination Centre New Zealand (RCCNZ)** coordinates national-level operations; for example, missing aircraft and offshore rescues.
- **New Zealand Police** coordinates local SAR operations covering land and sea.
- **Coastguard Northern Region** has a number of rescue boats spread throughout the region and monitors a network of VHF channels. Use Ch.16, *500 from a cellphone, or 09 3031303. www.coastguard.org.nz
- **Surf Life Saving New Zealand** also assists in SAR operations and, as the name suggests, specialises in areas of surf.
- **Independent coastal radio channels.** Russell Radio (Ch. 63) in the Bay of Islands, and Far North Radio (Ch. 60) provide local services on VHF for trip reports, weather forecasts and advice.

Northland Regional Council's Regional Harbourmaster (that's me) is responsible for Northland's navigational safety out to 12 nautical miles. My team maintains buoys and beacons, oversees local navigation safety rules, deal with wrecks and responds to any oil spills. If you see pollution or a

safety issue on the water, call us on 0800 504 639 or email info@nrc.govt.nz

The harbourmaster's office is not a local emergency rescue service – that role is filled by the coastguard and police.

Before arriving or moving to the next harbour, make sure you have all the contact details you need, and relevant VHF channels to hand – see page 18 for more information, or see our freely available '**Boating in Northland**' Booklet for more details. Charts are readily available at any chandlery.

Enjoy your time in Northland waters and stay safe!

Ngā mihi nui

Jim Lyle

Regional Harbourmaster
Northland Regional Council

Get live wind and wave data for the Bay of Islands



We've installed a live data buoy offshore of the Ninepin, to help you plan your coastal trips.

www.nrc.govt.nz/waves

Northland
REGIONAL COUNCIL
Te Kaunihera ā rohe o Te Taitokerau

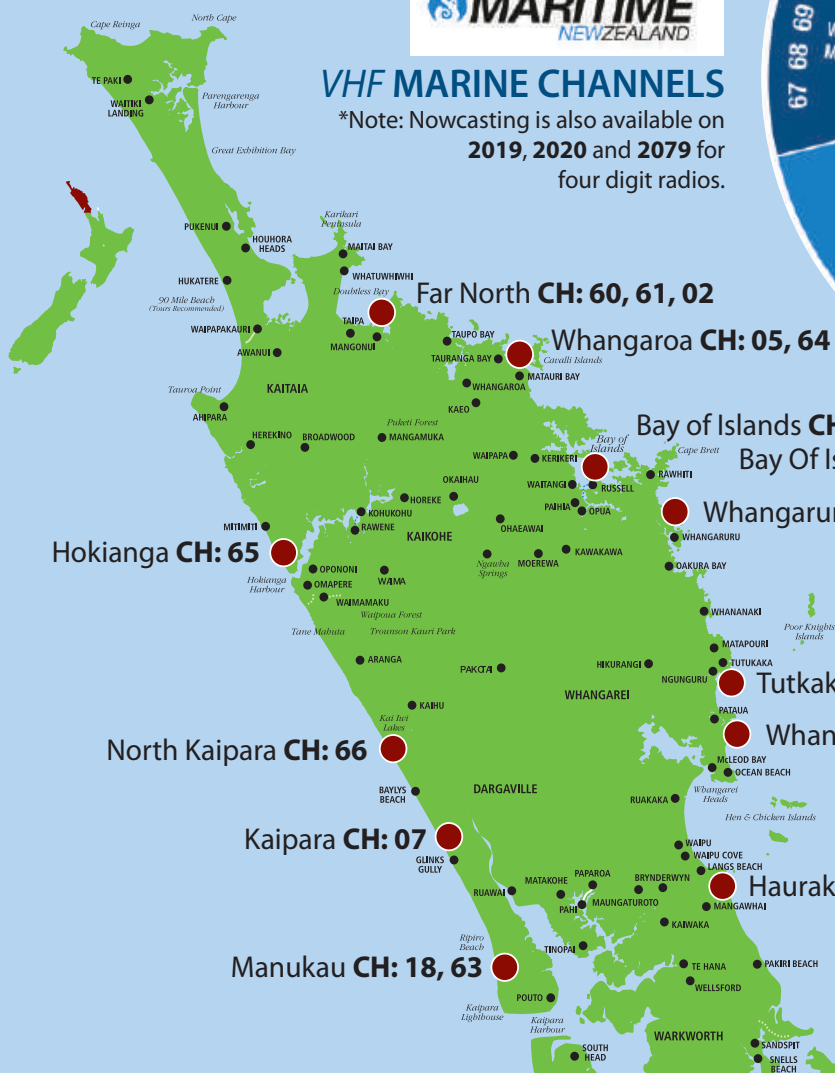
Information

VHF Channels / Weather / Tides & emergency services



VHF MARINE CHANNELS

*Note: Nowcasting is also available on 2019, 2020 and 2079 for four digit radios.



Weather, Tides & Emergency Services

1 VHF Weather

MARITIME NZ RADIO:

0533, 0733, 1033, 1333, 1733, and 2133 hours.

The forecast is announced on Channel 16 and then broadcast on the area working channel.

2 Other Weather Sources

National Radio: (AM and FM)

Newspapers

Local Radio & Private Radio

www.metservice.com

Metservice Weather information is broadcast simultaneously on VHF and MF/HF radio.

3 Tide Source

www.linz.govt.nz

Use these online tables to find daily predictions of the times and heights of high and low waters at standard ports.

Times used in the tide predictions are in New Zealand Standard Time (NZST). An allowance of plus one hour must be made during the daylight saving period (which commences on the last Sunday of September and ends on the first Sunday of April the following year).

Note: (Opua) Bay of Islands comes under Secondary Port' tide tables.

www.metservice.com

Metservice provides tides for Russell and other areas throughout New Zealand. These tables have already been corrected for daylight saving time.

4 Emergency Services – Dial 111

Ask the Telecom operator for the service you need. (Police, Fire, Ambulance).

You can call 111 in an emergency from any phone 24-hours a day.

It is free to call 111 from any phone in New Zealand.

Bay of Islands Cruisers Festival

**8-12
NOV
2023**

Highlights include:

Pirates 'Fun' Race and Party, Talent Night (and Pizza), Boatyard Burger Night.
A week of making friends, catching up with other cruisers, meeting the locals,
learning new things and having fun!

Monitor www.boimarina.co.nz or our facebook page for more details.





Roberton Island



Paihia Waterfront



Beach at sunset



One of the many bays to explore



Sales • Service • Spare Parts Ph. 402 8375 • info@boiam.co.nz

V O L V O P E N T A



Located opposite the Opua Cruising Club at the entrance to "Bay of Islands Marina" - Opua

For All your Marine and Automotive solutions:

Marine Services

Marine Engines, Drive Systems, Outboard Sales, Service and Repairs.

GenSets and Pumps.

Full range of Anodes, Drive Belts, Fuel and Oil Filters, Oils, Batteries.

All technicians are Dealer Trained and Authorised.

Certified welders available.

Automotive Services

W.O.F.

Complete Automotive Mechanical Service and Repairs, WOF Inspection,
Auto Electrics, Automotive Air Conditioning system Re-gas.



TOTAL YACHT CARE

Unit 7b Opua Marina
enquiries@yachtcare.co.nz
021 217 6064
yachtcare.co.nz

Caretaking - Monitoring
Polishing - Cleaning - Detailing
Painting - Varnishing

Be safe and enjoy boating in Northland



Wear your lifejacket

The majority of drownings happen in incidents with small boats.

Correctly fitted lifejackets must be worn in vessels six metres and under.



Keep to the speed limit

All boats must keep to 5 knots within:

- » any mooring or marina area
- » 50 metres of other vessels
- » 200 metres of the shore, wharves or marine structures
- » 200 metres of a dive flag.



Find out more about our local rules nrc.govt.nz/safeboating

P 0800 002 004 E info@nrc.govt.nz

Northland
REGIONAL COUNCIL

Te Kaunihera ā rohe o Te Taitokerau

Bay of Islands events

MAY 2023

COPTHORNE 4 COURSE GOLF CLASSIC

1-5 May

Four rounds of golf played in Kauri Cliffs, Waitangi, Kerikeri, and Whangaroa over five days, with a rest day included.

www.parnz.co.nz/2023-copthorne-bay-of-islands-4-course

BAY OF ISLANDS COUNTRY ROCK FESTIVAL 12-14 May

Welcoming award winning artists to Paihia and Russell, with Festival HQ at the Kingsgate Autolodge Hotel.

www.countryrock.co.nz

HOTPRINTZ BAY OF ISLANDS RUN/WALK FESTIVAL

21 May

Offering three distances, 6km, 8.7km and 21.1km which start and finish in Paihia. Scenic courses include the Waitangi Treaty Grounds and Mountain Bike Park.

<https://www.boirunwalk.co.nz/>

JUNE 2023

INTERNATIONAL YELLOWTAIL FISHING TOURNAMENT

11-16 June

Hosted annually by the Bay of Islands Swordfish club, the iconic light tackle Yellowtail Tournament is one of the oldest fishing tournaments in the country, and has kept anglers enthralled for years with the abundance of the famed Bay of Islands kingfish.

www.swordfish.co.nz/tournaments/events

MATARIKI BAY OF ISLANDS

17 June – 31 July

The Bay of Islands Matariki Festival features over 30 free and ticketed events over June and July in celebration of Puanga Matariki. These include cultural experiences, delicious kai (food), waiata (music) and mahi toi (arts), and a massive waterfront Street Festival and Waka display on Friday 24 June.

www.matarikin.co.nz

JULY 2023

FIFA WOMENS WORLD CUP

20 July – 20 August

The 2023 FIFA Women's World Cup, will be jointly hosted by Australia and New Zealand from 20 July to 20 August. The opening match is scheduled for 20 July at Eden Park between New Zealand and Norway, with the final to be held at the Sydney Olympic Stadium.

AUGUST 2023

THE EDGE BAY OF ISLANDS BEAST

26 August

The Bay of Islands Beast is an off-road, cross country event across 7km of steep farmland and uneven terrain. The event attracts around 1000 participants annually, and encourages team participation.

www.thebeast.co.nz

BAY OF ISLANDS JAZZ & BLUES FESTIVAL

11-13 August

The Bay of Islands Jazz & Blues Festival will run from August 11-13 2023 and features musicians from all over New Zealand and overseas. Street performances and evening shows unfold across four areas in Russell, Paihia, Haruru Falls, and Kawakawa.

www.facebook.com/bayofislandsjazzblues

OCTOBER 2023

'IT' BAY OF ISLANDS FESTIVAL

Dubbed by many as "the best mini-festival of the north" the festival promises mouth-watering food and award winning vineyards, and takes place on the village green in Paihia.

www.facebook.com/itbayofislandsfestival

COASTAL CLASSIC YACHT RACE

This iconic Kiwi yacht race starts off Devonport Wharf in Auckland and finishes outside Russell in the Bay of Islands, and historically runs on the Friday of Labour Weekend. It's a 120 nautical mile stretch up the East coast of the North Islands, and has long marked the opening of the summer sailing season for hundreds of Kiwi boaties.

www.coastalclassic.co.nz

BAY OF ISLANDS WALKING WEEKEND

12-15 October

Scheduled from 12-15 October 2023, the Bay of Islands Walking Weekend has a huge variety of walks, allowing participants to experience many of the islands and remote spots with walks ranging from 2km to 21 km.

www.boiwalkingweekend.co.nz

BAY TO BEACH OCEAN SWIM

The premier event is The Beach to Bay 3.3km which finishes in Russell, while other swims on offer include the Round the Bay (1000m), Beach Blast (500m), Amphibian – (Wim 500m/Run 3km/Swim 300m) and the Banana Boat OceanKids – 100m and 200m, for 7-12 years.

www.oceanswim.co.nz/events/beach-to-bay

NOVEMBER 2023

BAY OF ISLANDS CRUISERS FESTIVAL

Early November

This is a free rally departing from any port in the Pacific between late October and early November. Cruisers head to Opuia events and seminars.

www.boimarina.co.nz

BOI PASTORAL AND INDUSTRIAL SHOW

11 November

The oldest agricultural show in New Zealand is based at Waimate North and attracts around 7000 visitors each year.

www.bayofislandsshow.co.nz

NORTHLAND WASTE KERIKERI HALF MARATHON AND STREET PARTY

18 November

A predominantly downhill run from Okaihau to Kerikeri, this is a 21.1km course through rolling countryside. A 5km fun run is also on offer. Later in the evening the main street is closed for food stalls and entertainment, with local craft beer and wine stalls also on offer.

www.kerikerihalfmarathon.co.nz / <https://kerikeristreetparty.co.nz>

DECEMBER 2023

PAIHIA CHRISTMAS PARADE

When Santa comes to Paihia, accompanied by a range of floats organised by schools, local businesses and community organisations in a colourful display down the main street.

KERIKERI CHRISTMAS AT THE DOMAIN

Christmas carol classics, entertainment, Ice Rink and Rock Climbing Wall, along with Santa, games, food and craft stalls.

NEW YEARS EVE FIREWORKS EXTRAVAGANZA 31 December

Set from a barge in the centre of the Bay, the fireworks can be seen from many restaurants of bars or from the beaches surrounding the inner Bay.

www.paihianz.co.nz/new-years-eve-fireworks

JANUARY 2024

TALL SHIPS REGATTA

Hosted annually in early January by the Russell Boating Club, featuring Tall Ships, Classics, and All-Comers to make a large fleet. Participation is encouraged, and the day is topped off with a Hangi and Music.

<https://russellboatingclub.org.nz/>

BAY OF ISLANDS SAILING WEEK

23-26 January 2024

A multi-day sailing regatta primarily for keelboats, trailer yachts and multihulls.

<https://bayofislandssailingweek.org.nz>

FEBRUARY 2024

WAITANGI DAY CELEBRATIONS

6 February

A celebration to mark the first signing of The Treaty of Waitangi, held at the Waitangi Marae and Treaty Grounds.

<https://www.visitboi.co.nz/events>



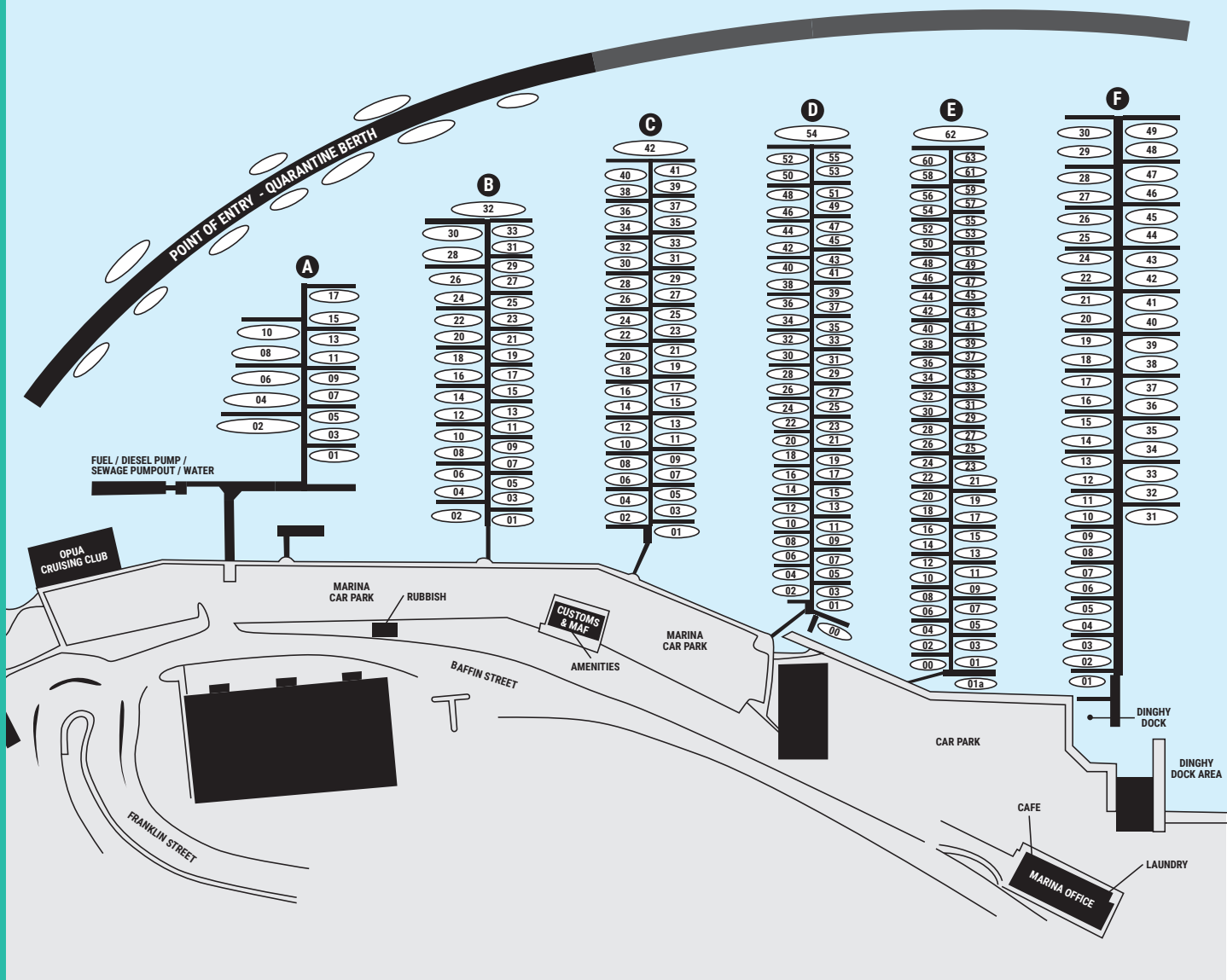
OCTOBER – COASTAL CLASSIC 2023



DECEMBER – NYE FIREWORKS



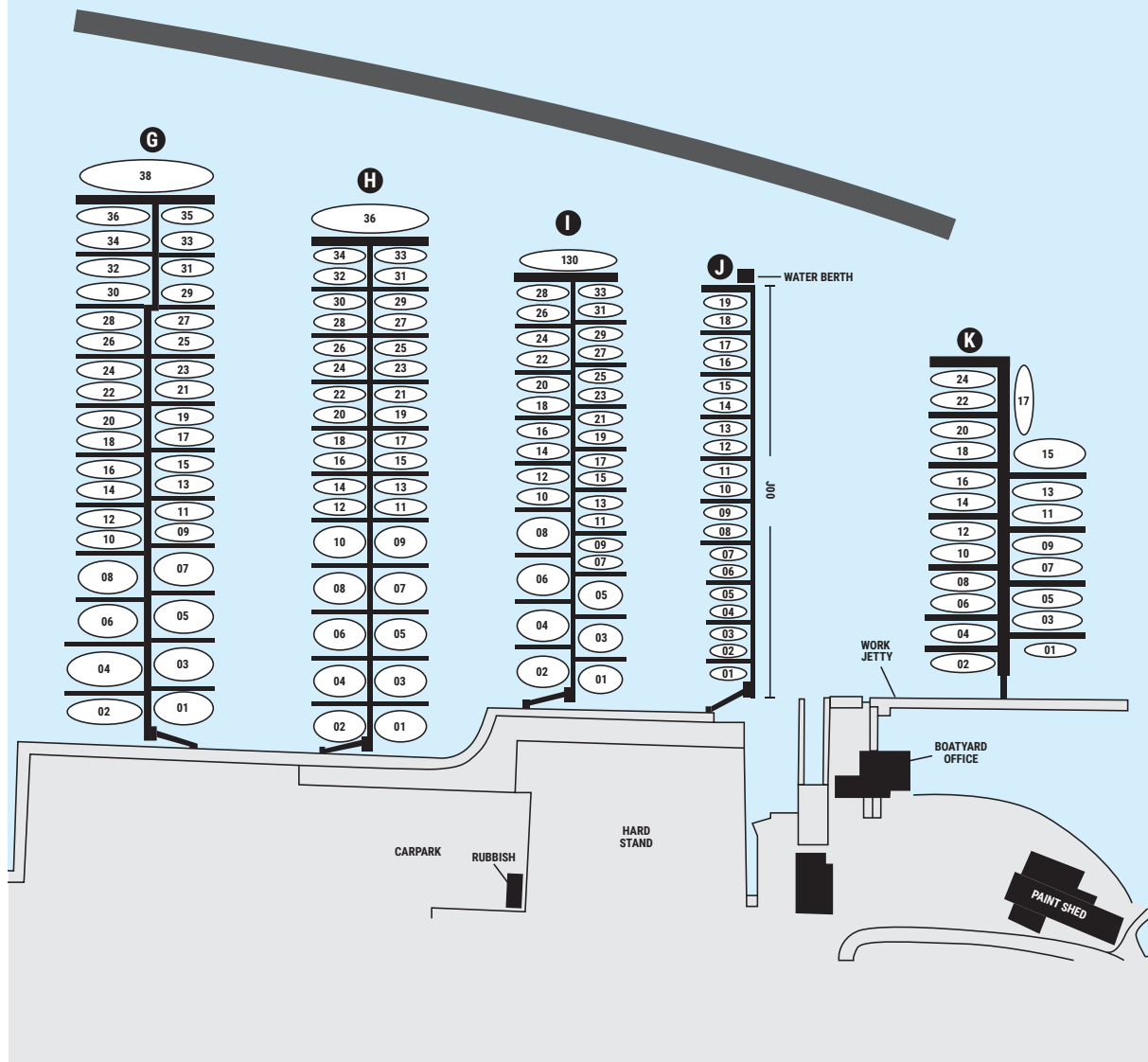
JANUARY – TALL SHIPS REGATTA



Where to tie up...

Welcome to the Bay of Islands Marina, if this is your first time landing in New Zealand you will need to wait at the Quarantine Berth to be cleared by customs. If you've been before please proceed to your assigned berth as shown on the plan above.





36° B R O K E R S



PREMIUM BROKERAGE | NZ BENETEAU & EXCESS DEALERS | 36° SERVICES

Thinking
Of Selling?

GET IN TOUCH WITH 36°
BROKERS TODAY!

About
US

36 Degrees Brokers offer advanced marketing solutions in the sale of Power, Multihull and Sail vessels across New Zealand and the South Pacific that gets results. Future thinking in our approach, we are always seeking new ways to entice customers and stay ahead of the pack.

We advertise on numerous platforms, domestic and international, and pride ourselves on offering innovative sales solutions to get the best result for your boat. Whether it's an upgrade, downsize or a straight sell, contact our professional team of brokers to help get you underway.

As a team, we always strive to work as hard and as effectively as possible while staying up to date with the latest trends and representing the company at events and boat shows to get clients the results they deserve.



AUCKLAND
OPUA
BREAM BAY
PICTON
TAHITI
NEW CALEDONIA



Northland's Top 10 Must do's

1. Twin Coast Discovery Highway

Although there is plenty to discover in Northland, we've made it very easy for you. Just follow the Twin Coast Discovery Highway, the circular touring route that lets you access all the region has to offer by way of a scenic relaxing drive.

2. The Poor Knights Islands

Off the Tutukaka Coast, the Poor Knights Islands Marine Reserve is a renowned divers' paradise, and equally appealing to snorkellers and kayakers. There are more than 50 dive spots around the islands – underwater arches and tunnels and the largest sea cave in the world.

3. Embrace culture and heritage

Northland is rich in a unique history that ties both Maori and European people together. Historical sites and artefacts can be found throughout the region. Make sure you visit the Waitangi Treaty Grounds, the birthplace of New Zealand – and the Kerikeri Stone Store.

4. Bays and Beaches

Golden beaches fringed by pohutukawa trees are an iconic New Zealand scene, of which you'll find plenty along Northlands East Coast. Visitors and locals alike enjoy boating, sailing, surfing, fishing, or just lazing around in the warm sunshine. One hour north of the Bay of Islands you'll find Doubtless Bay, a stunning area of cosy coves and small-town beaches.

5. Cape Reinga & 90 Mile Beach

Join a tour along 90 mile beach and toboggan down giant sand dunes at Te Paki Stream. Witness the meeting of the Tasman Sea and Pacific Oceans at Cape Reinga – a spiritual place in Maori tradition where the spirits of the departed leap to begin the voyage back to their final resting place in the ancestral homeland.

6. Food and Wine

Northland is fast becoming the new frontier for foodies in search of top quality cuisine in iconic New Zealand settings. There are award winning wineries in Kerikeri, and top restaurants include the Duke of Marlborough Hotel in Russell, the famous fish and chip shop in Maunganui, and iconic Cable Bay ice-cream shop.

7. Waipoua Forest, Day or Night

The giant Kauri trees of the Waipoua Forest are some of the largest and oldest living rainforest trees in the world. Stand in awe at the base of Tane Mahuta – the 2000 year old 'Lord of the Forest'.

8. Fishing

Game fishing legend Zane Grey described the Bay of Islands as the "Anglers Eldorado" and the area still lures thousands of kiwis who rank fishing top of their favourite leisure activities. This includes the legendary Ninety Mile Beach Snapper Classic.


9. Twin Coast Cycle Trail

Starting from Opua you must try this great trail to walk or ride. Enjoy farmland and scenic beauty. Explore rail trails, tunnels and bridges. Pass by lakes and rivers. Discover the history and heritage of Maori and European settlements. Visit www.twincoastcycletrail.kiwi.nz.

10. Mangonui Heritage Trail

Pick up a brochure from the Information Centre and take your own walking tour to discover the rich history of old Mangōnui. Far-reaching views are the reward for tackling the steeper lanes. Back in the centre, head to the Little Kitchen for a refuel, and drive up to Rangikapiti Pā for a breathtaking panorama of Mangōnui and Doubtless Bay.

Destination - BAY OF ISLANDS

An aerial photograph of a coastal area in New Zealand. In the foreground, a sandy beach curves along a bay with exceptionally clear, turquoise water. Two large, lush green islands with dense forest surround the bay. A small white sailboat is anchored in the water. In the background, the deep blue ocean extends to the horizon under a clear sky. Several rocky islets are visible further out in the sea.

Some say the average Kiwi has salt water in their veins, they just love getting out there on the water, sailing, racing, fishing, right down to kayaking and paddle boarding. Who can blame them when they live in a place as beautiful as New Zealand, clean clear blue water, awesome scenery a great climate and some of the best cruising grounds in the world. One of New Zealand's Maritime Jewels is the **Bay of Islands**. Situated on New Zealand's Northland Coast. The **Bay of Islands**, just 10 miles by 6 miles has it all; great fishing and diving, awesome sailing, a host of activities and above all dozens of safe, secure and scenic anchorages.

The **Bay of Islands** is also steeped in history, Cooks anchorage (in the foreground) on Motuarohia Island (Robertson), Russell, with the early sealers, whalers and traders, Honi Heki and the flagpole, the Treaty of Waitangi and the first seat of Colonial Government to name a few.


Getting your tongue around the Maori names can be fun & a challenge but you will quickly get used to them and there's often a contemporary name for most of the anchorages too.

So, welcome to **The Bay**; kick back, spend some time and enjoy yourself.

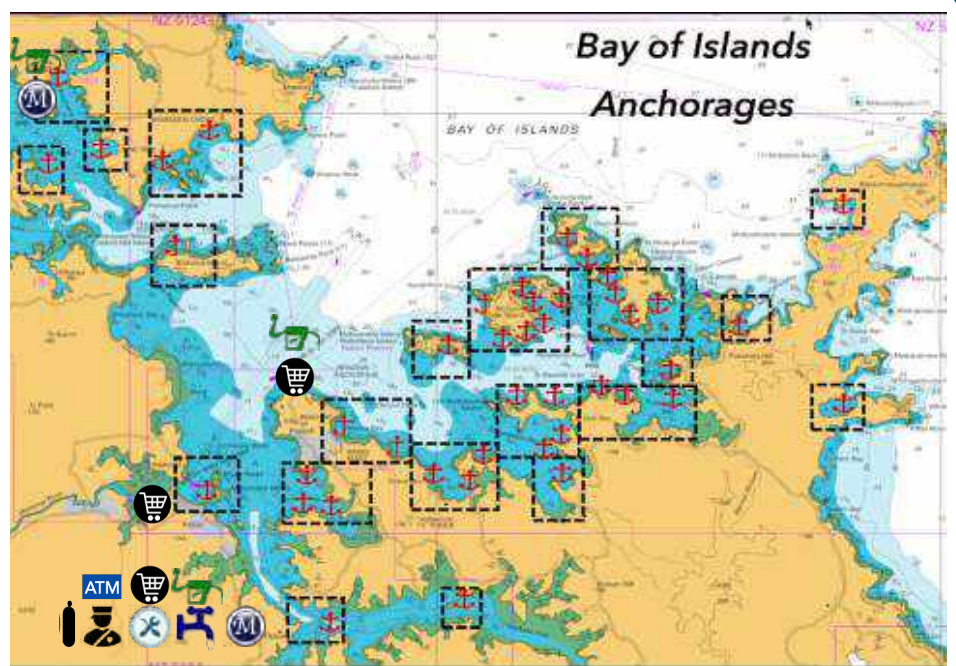
The Bay of Islands - View looking North
over Waiwhapupu Bay (Army Bay)
Looking towards Okahu Island



Your *FREE* Copy!

 Get the app

There are many stunning anchorages in the Bay of Islands and all the services a cruiser could need. Here we'll explore just some of those features.



Images Courtesy Sail South Pacific Cruising Guides

Destination - BAY OF ISLANDS

ROBERTON I (MOTUAROHIA I)

Roberton Island - View looking east across the isthmus and lagoons from the Maori Pa site. DoC have recently built a new Lookout and constructed steps and a boardwalk

The main anchorage on is on the southern side of the island and is a popular spot. The Maori name for the island is Motuarohia Island, but it is commonly referred to as Roberton. The island is part private ownership and part Wildlife Reserve (the isthmus area bounding the anchorage and the hill area to the west as far as the Maori Pa site).

The isthmus area plays host to Dotterel and other ground nesting birds in spring and is often a restricted area at this time. The area also features three lagoons which are excellent for swimming at high tide. The western lagoon also features a snorkel trail.

The island is steeped in history and there are numerous information boards for explanation. A steep track runs up to the ancient Maori Pa site from which there are fabulous views.



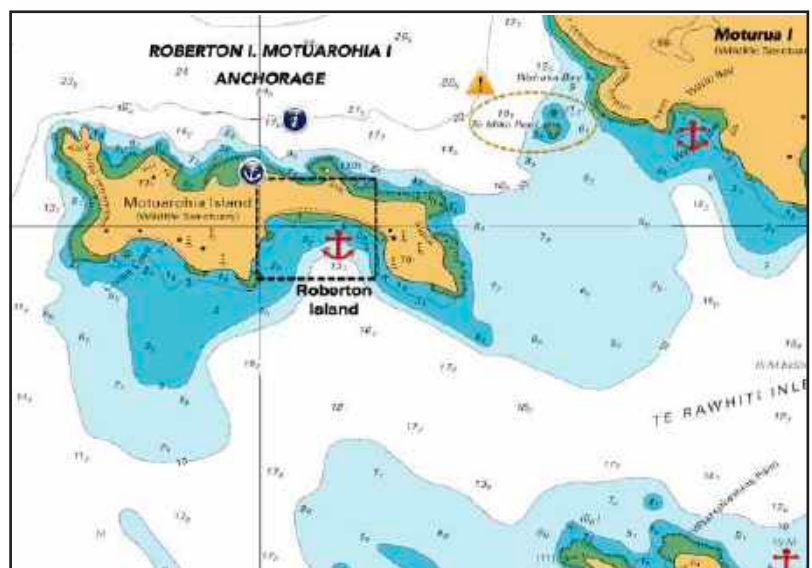
Roberton Anchorage **35° 14.00'S 174° 10.25'E**

This Anchorage is well protected in anything from the North. Holding 100m off the beach is good in sand. Anchor in 5.0m at the center of the beach and at the eastern end in 3.0m. Closer to shore there are patches of rock.



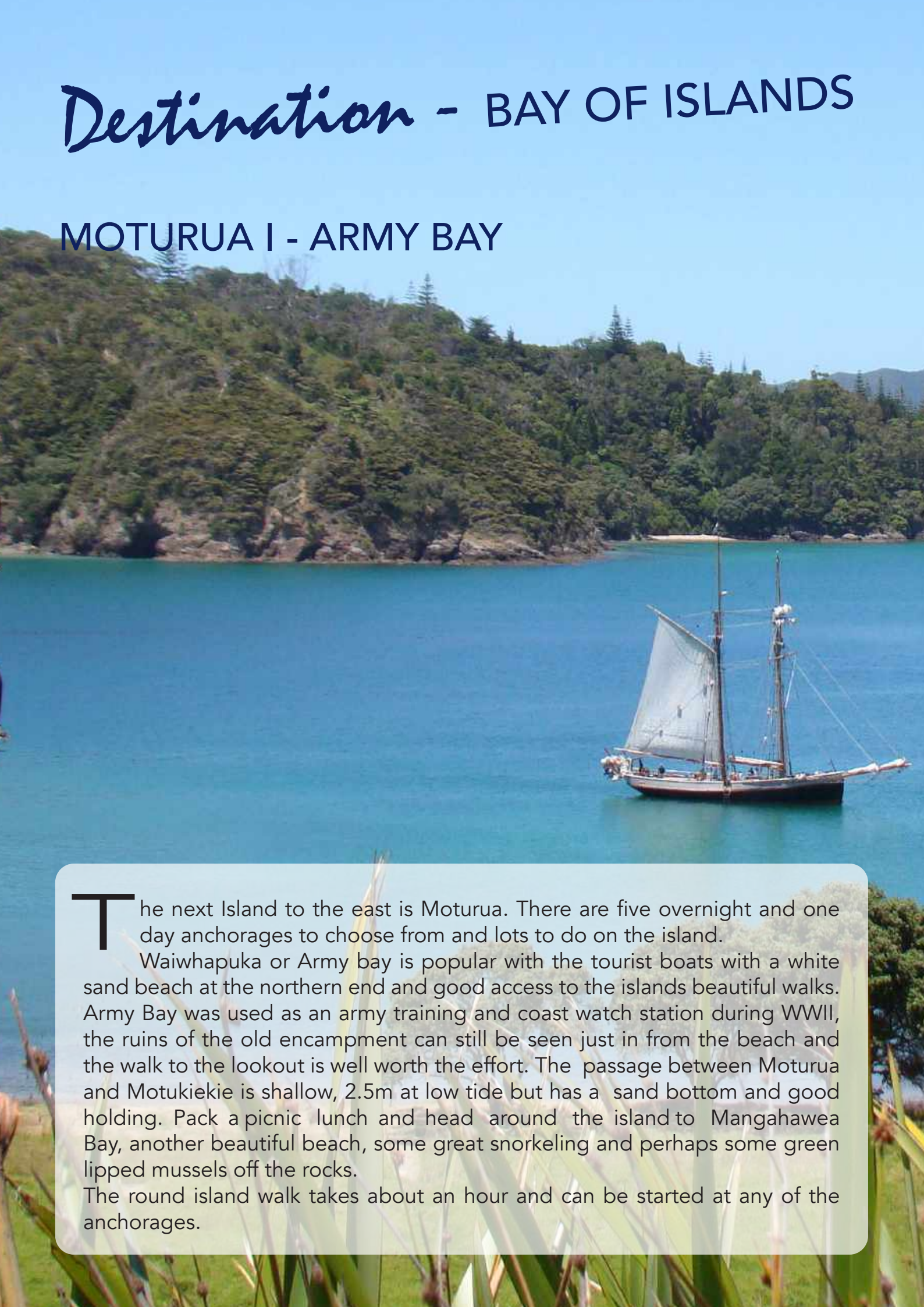
Caution

Te Miko Reef breaks at mid to low tide & only at high tide with a moderate lift



Destination - BAY OF ISLANDS

MOTURUA I - ARMY BAY



The next Island to the east is Moturua. There are five overnight and one day anchorages to choose from and lots to do on the island.

Waiwhapuka or Army bay is popular with the tourist boats with a white sand beach at the northern end and good access to the islands beautiful walks. Army Bay was used as an army training and coast watch station during WWII, the ruins of the old encampment can still be seen just in from the beach and the walk to the lookout is well worth the effort. The passage between Moturua and Motukiekie is shallow, 2.5m at low tide but has a sand bottom and good holding. Pack a picnic lunch and head around the island to Mangahawea Bay, another beautiful beach, some great snorkeling and perhaps some green lipped mussels off the rocks.

The round island walk takes about an hour and can be started at any of the anchorages.



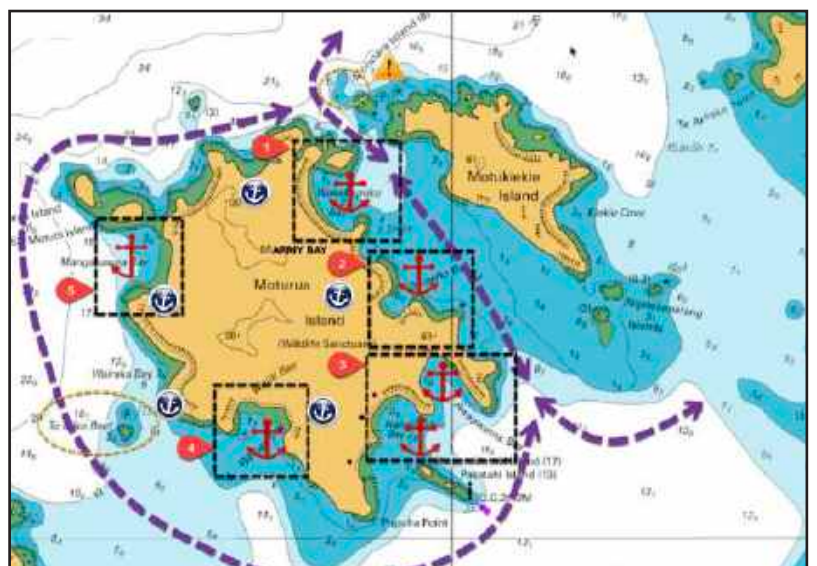
Army Bay Anchorage **35° 13.10'S 174° 11.70'E**

This Anchorage is well protected in anything from the South. Anchor in 3.0m. Holding 100m off the beach at the southern end is good in sand. There are patches of shingle at the northern end of the bay



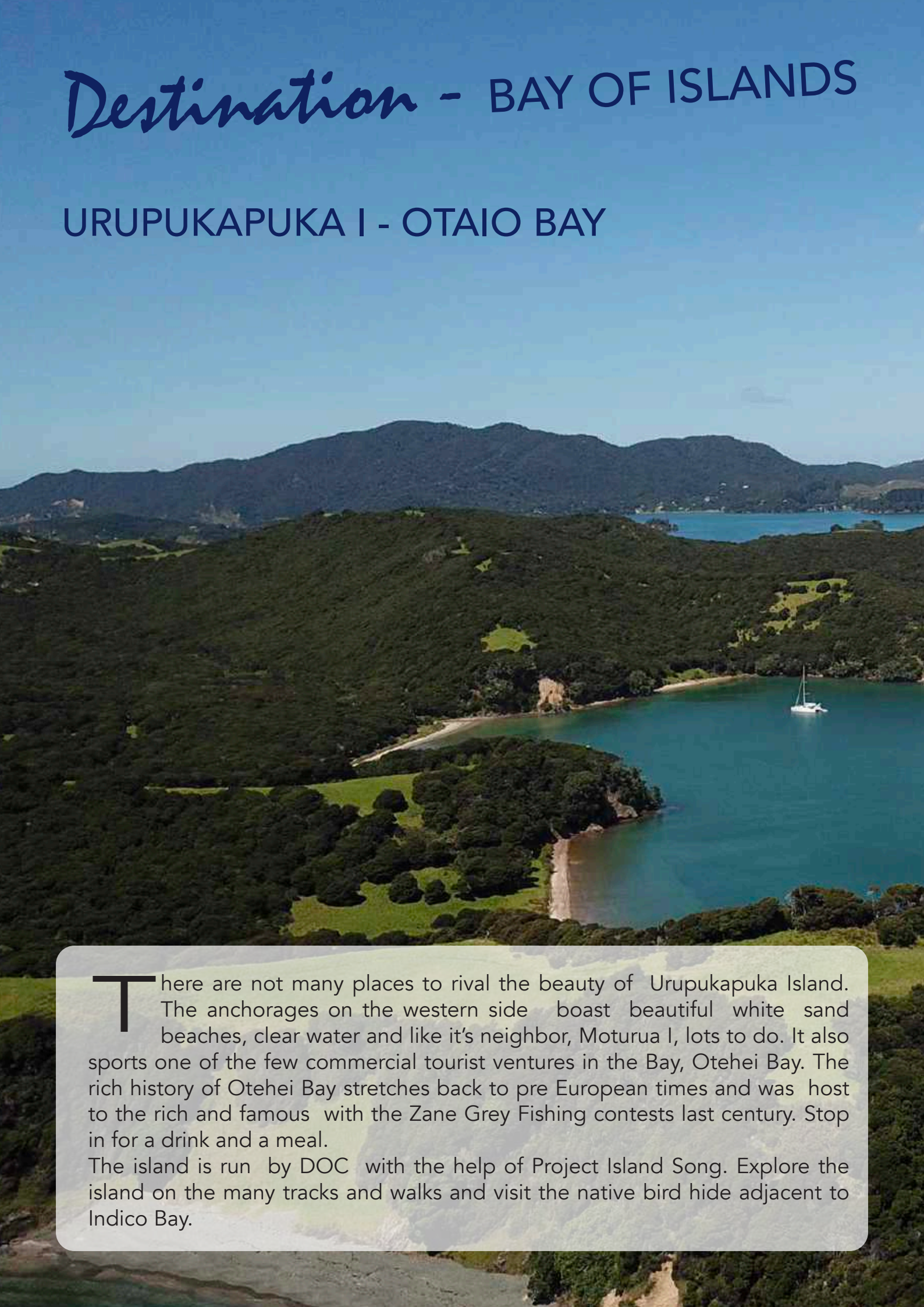
Caution

Just NW of Motutara Island lies a rock 1.2m at low water don't turn east too soon



Destination - BAY OF ISLANDS

URUPUKAPUKA I - OTAIO BAY



There are not many places to rival the beauty of Urupukapuka Island. The anchorages on the western side boast beautiful white sand beaches, clear water and like it's neighbor, Moturua I, lots to do. It also sports one of the few commercial tourist ventures in the Bay, Otehei Bay. The rich history of Otehei Bay stretches back to pre European times and was host to the rich and famous with the Zane Grey Fishing contests last century. Stop in for a drink and a meal.

The island is run by DOC with the help of Project Island Song. Explore the island on the many tracks and walks and visit the native bird hide adjacent to Indico Bay.

Looking south over Otaio Bay to Paradise Bay and the mainland.



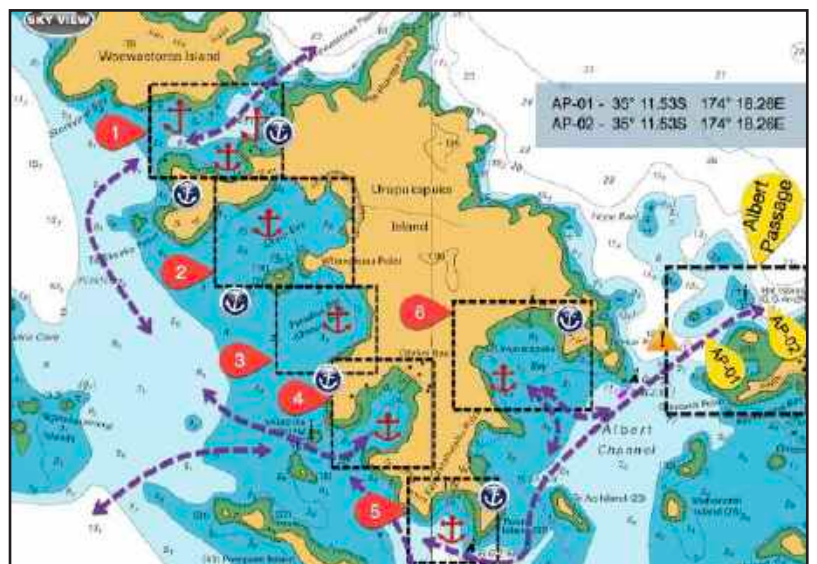
Otaio Bay Anchorage **35° 12.85'S 174° 13.44'E**

This Anchorage is protected in anything from the north and east. Anchor in 3.0m. Sand bottom. Holding is good in sand. There are patches of sea grass and weed closer to shore, avoid.



Caution

Watch out for the shallow patch just west of the reef off Te Akeake Point.



Destination - BAY OF ISLANDS

TE HUE BAY - OROKAWA ANCHORAGE



Te Hue Bay is one of the safest anchorages in the Bay of Islands. Consisting of three anchorages; Orokawa Bay, Assassination Cove and Opunga Cove, you may have to move around the bays as the wind clocks or backs around but is good in all wind direction, anchor in 5m on a stiff mud bottom with excellent holding.

This bay is a great hub from which to explore the whole bay area with only a short distance any of the dozens of great islands and bays, great fishing spots and numerous dive sites.

The bay is also known for it's bird song

Looking East over Orokawa Bay to
Opunga Cove and Assination Cove



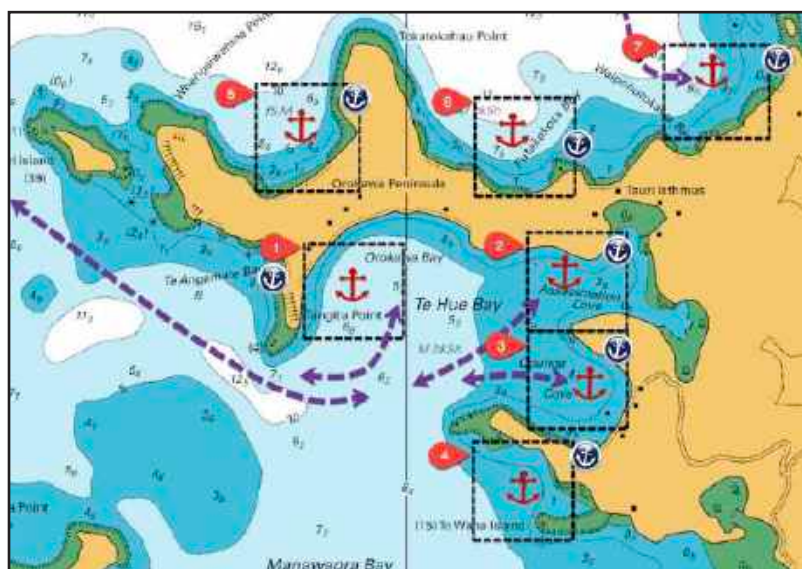
Orokawa Bay Anchorage **35° 15.30'S 174° 11.80'E**

Tucked inside Tanitu Pt. is one of the best all weather anchorages in the bay. Holding adjacent the Graveyard, 100m out is good in stiff mud. Shallow drafted vessels anchoring close in may experience a shale bottom with poor holding.

Land here has Riparian Rights



Cautions -
None



Innovative and Easy to Use CRUISING GUIDES

All you need to Cruise With Confidence in the South Pacific



YACHTSMAN'S SOUTH PACIFIC - CROSSING PLANNER. This Planning App gives Cruisers, Migrating Across the Pacific, all the resources and Local Knowledge needed to plan their migration from Panama West.

POWER & SAIL NZ - CRUISING GUIDE -

Comprehensive Cruising Guide for the main NZ Cruising Areas.

SAIL FIJI - CRUISING GUIDE -

Comprehensive Cruising Guide for the whole of Fiji's waters & routes west and south.

SAIL TONGA- CRUISING GUIDE -

Comprehensive Cruising Guide for Tonga & routes west & south including Minerva Reefs.

Other Western Pacific Guides also available!

(iOS for iPad - Drill down for more info)

www.sailsouthpacific.com



Scan me

Download on the
App Store



- NEW RACING & CRUISING SAILS
- REPAIRS, RECUTS & ALTERATIONS
- YACHTING ROPES

T: 09 407 8153 M: 021 786 080

4 NORFOLK PLACE, KERIKERI

info@willissails.co.nz www.willissails.co.nz

Contact us to make an appointment to come and see you.

SEAPOW

MARINE SERVICES SPECIALISTS - OPUA NZ

Mechanical installation - new, service, repair.

Engineering - Electrical - Plumbing

Marine engines - Gearboxes - Generators

Project management - Outboard servicing



Seapower's personnel are qualified and skilled marine technicians who share a commitment to the highest standard of workmanship and care.

Our team appreciate the importance of reliable equipment and the fundamental impact this has on an enjoyable and safe boating experience.

15 Baffin Street, Opuia | admin@seapower.co.nz | 09 402 8820

www.seapower.co.nz



Fishing

The Bay of Islands is the ultimate destination for recreational fishing, with a deep natural harbour and 144 islands providing a sheltered nursery for healthy fisheries and world-class fishing all year round.

The island's rugged volcanic shore and many reefs are home to a wide variety of fish species, including kingfish, red and golden snapper, trevally, tarakihi, gurnard, john dory and hapuka on the deeper reefs. The islands are also an ideal nursery for many other species and the perfect feeding ground for large game fish, including marlin and tuna.

The Bay of Islands Swordfish Club has clubhouses in both Russell and Paihia and runs competitions from November through to June. All visitors to the Bay of Islands are welcome to take part in the events, which are held over 2-3 days and are focused around a specific species or fisher group, with competitions for junior anglers and female anglers as well as targeted yellowfin tuna events.

The Bay of Islands and surrounding Pacific Ocean is world famous for its saltwater fishing and while there is no requirement for a license for recreational fishing, there are strict daily limits and minimum sizes that you must adhere to.

There is a strong tradition in New Zealand for deep water or game fishing, chasing the ultimate fight



FIND OUT ABOUT LOCAL FISHING GUIDELINES

To learn more about gathering seasons and catch requirements, as well as strict daily limits and minimum species sizes for fish and shellfish, we recommend you talk with our friendly staff in the Marina office before you head out.

with a billfish, including striped, blue and black marlin, yellowfin tuna, short-billed spearfish, mahimahi and broadbill swordfish. There is also abundant fresh shellfish throughout the Bay of Islands, including scallops, oysters and mussels.

If you're looking for the popular local fishing spots in the Bay of Islands, check out the following landmarks or if you can't find them on your map, just ask a friendly local: Nine Pin, Cape Brett, Middle Reef, Red Head, Hapuku Rock, Bird Rock, The Capstan and Waiwiri Rock.

To find out when the next fishing tournament is, we recommend visiting www.swordfish.co.nz or calling in to the Bay of Islands Swordfish Club clubhouses in Russell or Paihia. As well as signing up for the next competition, you can see amazing exhibits of historic fishing photographs, tackle and memorabilia and enjoy a full bar and restaurant.





TRANS MARINE

Sustainable Solutions for Sailors

p. +64-27-932-6815



Solar Solutions Northland

Trans Marine Pro and Solar Solutions Northland powering cleantech revolution by providing renewable energy sources for marine, land based and mobile homes.



Trans Marine Pro



p. +64-27-932-6815 info@transmarinepro.co.nz www.transmarinepro.co.nz Opuia, Bay of Islands, New Zealand

Est. 1989



Professional Boat Builders, boat yard and boat storage.

- Refits and repairs
- Modifications and upgrades
- Composite hard tops
- New Builds

- Hard stand & dry storage starting from \$200 per month
- Container storage
- Repaints

www.blairboats.com



Fresh Fruit & Vegetables

Postal Agency - Letters, Parcels, Poste restante.

Sim Cards - All the New Zealand Carriers

Lotto Outlet - Gotta be in to Win!

Bike Hire - Explore the Twin Coast Cycle Trail

Fishing - Tackle, Bait, & Ice

Catering - for any event around the Marina or BOI



Delicious Bread and Pastries baked onsite daily

Your Friendly Local for everything



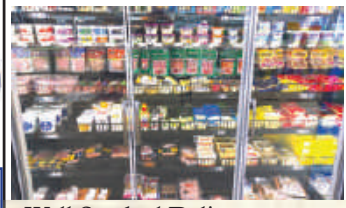
Great Range of Groceries - For Home or provisioning the boat.

Beer, Wine, Cider - Local and International brands.

World Famous in Opuia - Pizzas! Most evenings - call to check availability

ATM - Accepts International Credit Cards

Friendly advice on the area and what to do



Well Stocked Delicatessen

Hours - 7 days a week
6.30am - 7pm (Summer)
6.30am - 6pm (Winter)

Contact us -
+64 9 402 7575
admin@opuastore.co.nz

Follow us on Facebook
@theopuageneralstore

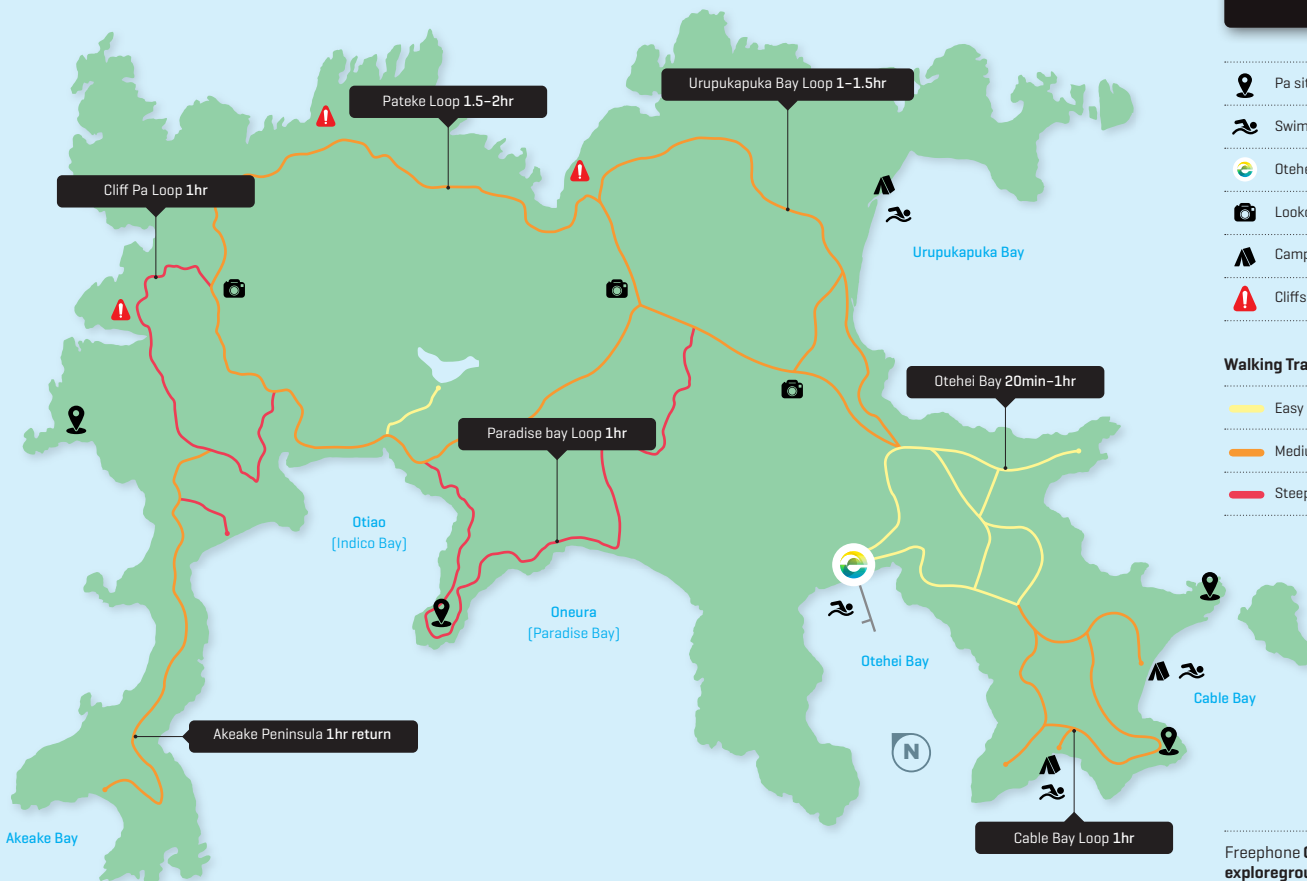


Great Coffee & Delicious Food



Unique Experiences in Amazing Places

EXPLORE URUPUKAPUKA Walking Tracks



explore

Freephone 0800 397 567
exploregroup.co.nz

IF IT DOESN'T SEEM RIGHT, REPORT IT.



You know your coast. If it looks suspicious
or doesn't feel right, report it.

Help us protect New Zealand's border.



NEW ZEALAND
CUSTOMS SERVICE
TE MANA ĀRAI O AOTEAROA

Confidential hotline 0800 937 768

0800 WE PROTECT

CUSTOMS.GOVT.NZ/REPORT

Or talk to a member of your local Customs team

Arrival Guide

Recreational vessels, yachts and small craft

www.customs.govt.nz/yachts

New Zealand's maritime border

New Zealand's borders are fully open to visitors from anywhere in the world. There are no longer COVID-19 vaccination or testing requirements to enter New Zealand by sea on any type of vessel. However, operators may require evidence of vaccination or have other requirements to travel onboard their craft.

Before you travel

You need to comply with all requirements to enter New Zealand. Each person aboard must have:

- A valid passport.
- A visa (if required). Travellers other than New Zealanders and Australians require a current visa or NZeTA to enter New Zealand. For more information visit immigration.govt.nz
- Evidence of funds of NZ\$400 per month, if living onboard a yacht.
- An outward ticket (or evidence of sufficient funds to buy an outward ticket) if departing by commercial transport.

Arrival documentation

Travellers must complete a number of forms prior to arrival in New Zealand, and some once you arrive in the country. You can find these forms on the Customs website at www.customs.govt.nz/yachts

The forms must be completed in full and supplied with other specified supporting documentation, such as evidence of value. Each form must be supplied within the required timeframes.



For more information about travelling to New Zealand including mandatory documentation to complete visit www.customs.govt.nz/yachts



If you have any questions, email us at yachts@customs.govt.nz



NEW ZEALAND
CUSTOMS SERVICE
TE MANA ĀRAI O AOTEAROA

**Protecting and promoting
New Zealand across borders**





Don't bring hitchhikers to New Zealand on your vessel

The threat: Exotic pests, such as red imported fire ants and mosquitoes, could affect human health and seriously harm New Zealand's economy and unique environment. Many insect pests can fly, meaning that they do not have to be physically transferred from a vessel to the land to establish a population. You could unknowingly be carrying a variety of pests on board.

What are hitchhikers?

Hitchhikers are insects and animals that arrive on your vessel – sometimes in small numbers undetected and sometimes in swarms. Some such as moths can lay their egg masses on the vessel. Some termites and borer beetle can live in the wooden parts of the vessel structure. Some may build nests (ants) or inhabit standing water (mosquito larvae).

Some common hitchhiking pests found on ships and yachts at New Zealand ports are ants, termites, beetles, mosquitoes, wasps and bees.

Exotic termites have been found on recreational vessels arriving into New Zealand. These are usually found in wooden structures and fittings when vessels are undergoing refit.

Arriving vessels have also been found carrying exotic ants. They pose a risk to public health, agriculture and horticulture and can become significant urban pests.

There are numerous interceptions of exotic mosquitoes at ports each year including the Asian tiger mosquito (*Aedes albopictus*) which can spread a number of diseases such as Dengue fever and Ross River Virus.

You can help prevent the spread of hitchhiking pests to New Zealand

Prior to leaving your last port check your vessel for pests (insects and other animals). Pay attention to decks, holds, and galleys or other areas where food is found, as well as warm areas such as near engine rooms. Also check wooden structures and packing for insect damage by wood-borers or termites.

Kill or remove all pests found on board. Use a knock-down insecticide containing permethrin to kill insects and use baited traps for vermin. Also traps could be used for crawling insects such as ants.

Undertake a regular pest management programme and keep a look out for pests during your voyages.

Mosquitoes may breed in water on board such as in saucers under pot plants and in tyre fenders. Remove standing water by drilling drain holes in objects such as tyre fenders. (Add chlorine bleach to water which you suspect may contain larvae).

If you have a pest infestation or something you cannot deal with before arrival, declare this in your Advance Notice of Arrival form

and report it to a biosecurity inspector on arrival in New Zealand. They will assist you with removal of the pests or treatment of your vessel.

Biosecurity NZ officers can now issue infringement notices to commercial and recreational vessel operators that don't meet their biosecurity obligations.

- The infringement notices cover lower-level offences that would have required prosecution to enforce in the past:
- Failure by an operator to provide notice of a vessel's arrival in New Zealand.
- Failure by an operator to respond to an official request to declare what has been done to comply with risk management requirements (eg. biofouling rules).

The penalties are \$400 for an individual and \$800 for a corporation. Biosecurity NZ still has the option to prosecute if necessary.

The new fines emphasise the importance of keeping unwanted pests and diseases out of New Zealand.

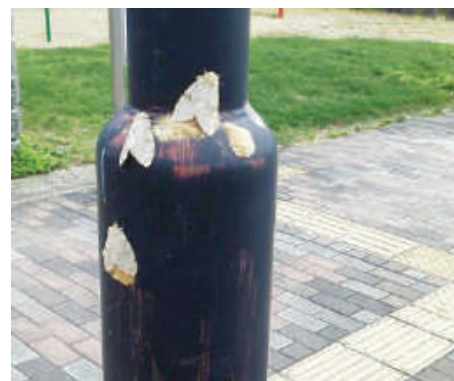
www.biosecurity.govt.nz/importing/border-clearance/vessels



Drywood termites



Asian tiger mosquito



Spongy moth and egg mass



Burnsco is the biggest seller of marine and motorhome accessories in New Zealand.

We stock over 10,000 products. It's a huge range - marine electronics, safety gear, fishing tackle, kayaks, anchoring, clothing, marine paint, plumbing, electrical and lighting, yacht fittings and much more. So the chances are that you'll find what you need at Burnsco. And if they haven't got it, they can get it for you - fast! With 15 stores around the country, we're your one stop boating and RV shop.

16
Stores
+ Webstore!



**Paint and
Maintenance**



Fishing



Electronics



Clothing



Safety



36°
BROKERS

36° FOR SALE BROKERS

Every year we welcome international cruising boats to the Bay of Islands. There is an influx of yachties from October onwards, as many sail to New Zealand to escape the cyclones and enjoy a Kiwi summer.

New Zealand is a common final destination for offshore cruising itineraries. Instead of making the long hard slog back to the Northern Hemisphere, many people choose to sell their boat here and fly home instead. 36° Brokers has been available to assist many boaties in this situation.

If you haven't already caught up with us at Musket Cove Race Week in Fiji, you'll likely see us outside our office at Bay of Islands Marina. We wave at the boats flying Q flags as they drive past and say "Welcome to New Zealand!"

The topic of buying and selling internationally registered yachts in NZ waters can be confusing, as each country has their own set of rules. Fortunately, Robbs of 36° Brokers Opuia has had a lot of experience in this area, having spent the last six years selling boats and dealing with customs in Opuia.

When an internationally registered boat arrives in New Zealand, they are given a Temporary Import Exemption (TIE) from NZ Customs, which lasts two years. After that time, the boat must either go offshore, or be imported into New Zealand.

In order to list a boat for sale, the listing broker will get permission from NZ Customs to advertise the boat for

sale. Customs will give us a depreciated value on your boat, so the longer you have owned it the lower your importation tax will be.

You have the option to sell to an international buyer (without tax) or to a local buyer (who will need to import the boat). Many vendors decide to list for sale once they arrive in New Zealand and have taken advantage of the duty-free services and products during their stay.

We can help you at any stage through the Pacific. Previous examples of successful sales have included advertising boats for sale while owners are still cruising, which has led to a buyer waiting for them when they arrive in New Zealand. In other cases buyers have taken ownership while in the islands and enjoyed some tropical cruising before bringing the boat back to their home country.

From initial contact through to helping cruisers ship their items home after a completed sale, through to connecting them with local marine services – we are happy to assist with logistics.

We deal with foreign currency and exchange through our international deals. Our dedicated accounts and admin team have a wealth of experience in this area and are here to help ensure we navigate the best way through foreign currency and bank fees.

A few examples of completed sales:

50ft Monohull

Kiwi owners were cruising with their family in Fiji and contacted Robbs to list their boat for sale. It was listed in September 2022, and sold by mid-October, with the survey carried out in Fiji. Owners delivered the boat to NZ where the Canadian purchaser took ownership, and as an international buyer no import tax was required.

40ft Catamaran

This boat was listed in Fiji after meeting Robbs at Musket Cove Race Week. When the boat arrived in NZ a month later a deal was completed with one of several keen buyers. As the buyers were kiwis, the importation was done with NZ customs. Funds from the sale were transferred to the vendors international account, and we assisted them with shipment of personal belongings back to Europe.

40ft Monohull

Vendors met broker Eric in Tahiti, and we gathered information about this boat while they cruised the Pacific. The boat was advertised while they were in Fiji, and when owners arrived in Opuia we assisted with their servicing, maintenance, and rigging replacement to ensure their boat was in prime condition, ready for sale.

If you're around Opuia, pop in and say hi to the 36° team!
Located in the office next to the General Store on the wharf.
To make contact beforehand, please email robbs@36degrees.nz
or call directly +64 21 858 897. For further information visit
www.36degrees.nz, email info@36degrees.nz or phone +64 9 903 1001.





South Pacific Marine Canvas & Upholstery

Opua Marina

027 4942492

southpacificmarinecanvas@gmail.com

FISHEYE FABRICATION LTD.



Opua New Zealand

Stainless Steel Fabrication
Vinyl Boat Names
Yacht Repair

+64 22 517 0854
fishyefab@gmail.com
fishyefab.com

Located at Bay Of Islands Marina



Northfreeze

**MARINE REFRIGERATION &
AIR CONDITIONING**

We have over 25 years experience in the Bay of Islands servicing fishing boats to luxury yachts.

12v-24v - off engine - 110v-230v systems
Isotherm - Frigoboat
Minor repairs to major refits.

Northfreeze Refrigeration
Opua, New Zealand
p. +64 9 402 7094
e. northfreeze1@outlook.com
w. www.northfreeze.co.nz





MULTIHULL



CENTRAL

Port Opua Bay of Islands
New Zealand



Multihull Central

is one of the fastest growing multihull brokerages in New Zealand, Oceania and throughout the South Pacific. We specialise in selling cruising catamarans and have locally and internationally an invaluable amount of boating, business and professional experience amongst our team.

In sales and marketing we strive for innovation and results.

Located Bay of Islands Marina
All enquiries: opua@multihullcentral.com
+64 274 542 242 / www.multihullcentral.com

Recent New Listings



Lagoon 52



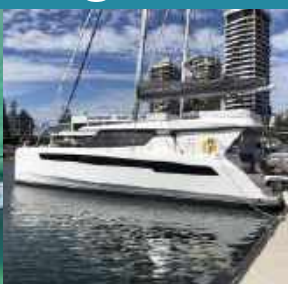
Royal Cape 50
'Elanah'

Gold Coast, Qld



Seawind 1600
'Womble'

Opua, New Zealand



Leopard 50
'Sunrise'

Gold Coast, Qld



Lagoon 50
'Soft Soul'

Gold Coast, Qld



Seawind 1600- 2018



Outremer 55- 2008



Outremer 51- 2014



Outremer 51- 2019



Outremer 45 - 2017



Privilege 14.7 - 1989



St Francis 50- 2015



Crowther 85- 2003

The Best Place to Sell your Catamaran in the Pacific

If you're looking for the best place to sell your catamaran, then come to the right place. Our sales times are on average 1 month shorter than most, thanks to our team's multihull knowledge, international contacts and fantastic marketing expertise.

Choosing Multihull Central is the best way to sell your boat in the Pacific, so contact us now for a proposal.





OPUA BOATBUILDERS LTD

Expertise in all aspects of boat repair

- ✦ Fibreglass repairs and alterations
- ✦ Rot repairs
- ✦ Hatches & window replacements
- ✦ Installation of thru hull fittings
- ✦ Teak decks
- ✦ Acrylic and plywood sales



Unit 5, 15 Baffin Street, Opuā
Phone Graeme: 021 236 1721 | opuaboatbuilders@gmail.com

Information

Russell Radio 2MH310

Ph/Fax (09) 403 7218 russell.radio@outlook.com

VHF Channel 63 and Channel 3 – operating 09:00 – 19:00,
7 days a week.

Daily weather forecasts at:







09:00, 11:30, 13:00, 15:00, 17:30 and 18:50 on channel 63.

Russell Radio is also available for information on services – medical facilities, petrol & diesel outlets, phone numbers etc. They are contactable from Tutukaka in the South to Doubtless Bay in the North and extending 50 miles seawards.










They are also able to update Customs and MPI of your arrival time at Opuā, Whangarei or Auckland.



Walking Tracks

-  **Waitangi, Haruru Falls, Mangrove Walk**
1.5hrs one way
-  **Opua Coastal Walk** 2hrs one way
-  **Paihia Lookout Track** 30mins one way
-  **Paihia to Waitangi Treaty Grounds**
30mins one way
-  **Paihia to Oromahoe Rd** 2.5hrs one way
-  **Flagstaff Hill Walk** 30mins one way
-  **Bay of Islands Coastal Walk** 5hrs return

Key

-  Toilets
-  Doctor
-  Car Parking
-  Information
-  Tourist must see
-  Supermarket
-  Petrol Station
-  Church
-  Police

Book now 0800 653 339
info@fullersgreatsights.co.nz
dolphinscruises.co.nz

  #fullersgreatsights





Visit Otehe Bay, Urupukapuka Island



Jump on our ferry to Otehe Bay departing Paihia and Russell daily.

- Pest free island reserve with regenerating native bush and birdlife
- Explore extensive walking tracks
- Swim and snorkel at quiet sandy bays
- Refuel at our fully licensed beachfront bar and café
- Kayak and Paddleboard hire (subject to availability)



For more information and ferry
timetable visit: oteheibay.co.nz



Passenger Ferry Timetable: Paihia - Kororāreka/Russell

Paihia to Russell	7:20am	12:30pm	5:30pm
	8:30am	1:30pm	6:30pm
	9:30am	2:30pm	7:30pm
	10:30am	3:30pm	8:30pm*
	11:30am	4:30pm	9:30pm*
			10:30pm*

Russell to Paihia	7:00am	12:00pm	5:00pm
	7:45am	1:00pm	6:00pm
	9:00am	2:00pm	7:00pm
	10:00am ^w	3:00pm ^w	8:00pm*
	11:00am	4:00pm	9:00pm*
			10:00pm*

(w) Drop off at Waitangi available
on request *October to May only.



Petrol Station



Tourist must see

Otehe Bay Ferry 40 minutes one way



In the area:

Bay of Islands Hospital Services

The Bay of Islands Hospital is located in Kawakawa and provides care to the people of the Bay of Islands and the Mid North

Kaitaia Hospital Services

Kaitaia Hospital is Northland DHB's northernmost hospital. It is a general hospital serving a widely scattered population.

Whangārei Hospital Services

Whangārei Hospital is Northland DHB's largest and provides secondary specialist care to all of Northland.

Visit <https://www.northlanddhb.org.nz> for information on service providers, afterhours and emergency care, and Northlands' health services.

Chemists in the Bay of Islands can be easily located in Paihia, Kawakawa and Kerikeri and there will usually be a qualified pharmacist on hand to advise for minor injuries or conditions.

Your Local Paihia Dentists



See our friendly team for
all your **dental needs**.

Important message from the New Zealand Ministry of Health

Kia Ora, welcome to New Zealand.

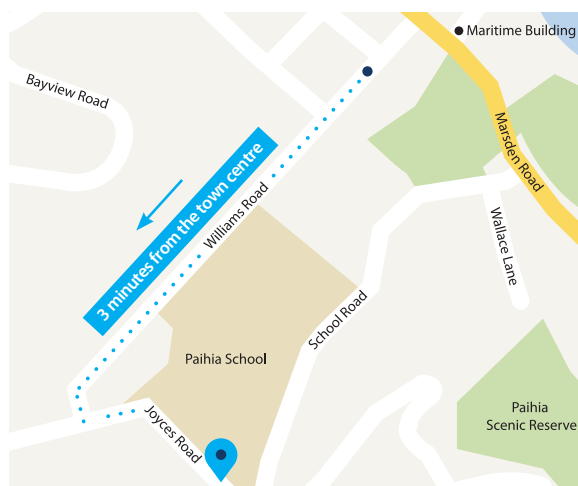
If you get **sick** within a **month** of arriving in New Zealand, please seek **medical advice** as soon as you can.

Telephone the **free** Healthline on **0800 611 116** or contact a doctor.

It is **important** to tell them that you have been **outside New Zealand** recently.



New Zealand Government



1A Joyces Road, Paihia

LuminoThe Dentists

09 402 7714 | lumino.co.nz/paihia





BAY OF ISLANDS MARINA SERVICES

We'll be there to meet you and answer any questions you might have but we've put together this handy map and list of all the services available at the Marina to make things even easier for you during your stay with us.

- 01. Opua Wharf (marina & commercial berths)
- 01. R Tucker Thompson
- 01a. Opua Wharf Pontoon
- 02. Trans Marine Pro
- 02. Moorings Northland
- 02. Fair Wind Charters
- 02. 36° Brokers
- 02. Opua General Store
- 03. Total Marine Services
- 04. Opua Cruising Club
- 05. Quarantine Dock
- 06. Fuel Dock
- 06. Sewerage pump out
- 06. Water
- 07. Northland Ferries
- 08. Northland Spars & Rigging
- 09. JB Marine
- 09. Opua Auto & Marine
- 10. Far North Rentals
- 10. E Bike and bike Hire
- 10. Twin Coast Cycle Transport
- 11. Gulf Group Brokers
- 11. Toilets / Showers
- 12. Burnsco
- 13. Breakwaters (x2)
- 14. Carparks
- 15. Opua School
- 16. Bay of Islands Marina Office
- 16. Laundromat
- 16. Marina Café
- 16. Bay Insurance / Multihull Central
- 16. Visitors Lounge / Toilets / Showers / Media Office
- 17. Boat Ramp
- 18. Dinghy Docks
- 19. RaD Car Hire
- 19a. Stage/Pous
- 20. Northland Regional Council (NRC)
- 20. Seapower
- 20. Opua Canvas
- 20. Cater Marine
- 20. Opua Boat Builders Ltd
- 21. Total Yacht Care
- 21. Northfreeze
- 21. Marine Electrics
- 21. Opua Boat Builders Ltd
- 21. Techno Electrical
- 21. Fisheye Fabrication
- 21. North Sails
- 21. South Pacific Marine Canvas
- 21. NZ Customs
- 21. Ministry for Primary Industries (MPI)
- 22. Total Engineering
- 23. Open Ocean Watermakers
- 23. FNHL Maintenance Division
- 23. Mobile Marine Services
- 24. Storage Units
- 25. Bluefix Boatworks
- 26. Bay of Islands Boatyard Office
- 27. Bay of Islands Boatyard Painters
- 28. Bay of Islands Marina work jetty
- 29. Hardstand



COME AND SEE US FOR ALL YOUR SAIL AND CANVAS NEEDS

Custom Racing and Cruising Sails
Custom Made: Dodgers/Biminis/Sail
Covers/Stack Packs/Dinghy Covers

Interior and Exterior Marine
Upholstery

Deck Hardware and
Rigging Service Available

1 Finlayson Street, Whangārei

Phone: 09 430 2801

Phil Houghton: 021 2223902

Email: phizzle@uksailmakers.com

www.northlandcanvas.co.nz



p. + 64 9 402 5511

m. + 64 27 480 599

e. bayofislands@radcarhire.co.nz

www.radcarhire.co.nz

Ask about our November special.

**Located at the
Bay of Islands Marina carpark.
Ring Wayne to book your vehicle.**

**CALL
FREE 0800 73 68 23**

Hans Klomp Service & Support on Marine Electronics

Raymarine®

Specialist Dealer

Tauhara Electronics

www.tauhara.com

022-3072563



The BoatYard Vava'u - Tonga

Secure handstand yacht storage for your South Pacific cruising adventure

LONG TERM
STORAGE

SHORT TERM
STORAGE

REPAIRS &
MAINTENANCE

LIVEBOARDS
WELCOME



Contact us now to find out more about hauling
your boat in the cruising grounds of Vava'u

www.boatyardvavau.com info@boatyardvavau.com





Opening Hours - Mon - Fri 7am - 5:30pm

Sat - 8.00am - 5.00pm

Sun - 8.00am - 4.00pm

Address - Unit 16, Opua Marine Park
Baffin St., Opua Bay of Islands - New Zealand

Phone Phone: **+64 9 402 8292**

Email - sales@catermarine.co.nz

Cater Marine

0800 22 83 76

**ARE YOU BUILDING A BOAT?
OR
JUST DOING SOME MAINTENANCE?**

Do you need to replace a door latch, or redo all the wiring and plumbing aboard? Are you planning a fishing trip or a holiday with the family? At **Cater Marine**, we stock a wide selection of products for leisure and commercial yachts and launches from Anchors to Zincs and everything in between. We also offer dive refills.

We'll match their price and throw in *a little thing called service!*



BOATING & OUTDOORS

Supplies for the Kiwi lifestyle