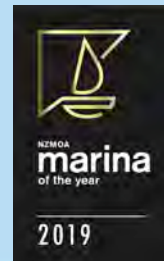


Bay of Islands
Port Opua, New Zealand



The Gateway.

A cruisers guide to the Bay of Islands in
New Zealand's beautiful Northland





Opening Hours - Mon - Fri 7am - 5:30pm
Sat - 8.00am - 5.00pm
Sun - 8.00am - 4.00pm

Address - Unit 16, Opua Marine Park
Baffin St., Opua Bay of Islands - New Zealand

Phone Phone: **+64 9 402 8292**

Email - sales@catermarine.co.nz

Cater Marine

0800 22 83 76

**ARE YOU BUILDING A BOAT?
OR
JUST DOING SOME MAINTENANCE?**

Do you need to replace a door latch, or redo all the wiring and plumbing aboard? Are you planning a fishing trip or a holiday with the family? At **Cater Marine**, we stock a wide selection of products for leisure and commercial yachts and launches from Anchors to Zincs and everything in between. We also offer dive refills.

We'll match their price and throw in **a little thing called service!**



BOATING & OUTDOORS

Supplies for the Kiwi lifestyle

Bay of Islands Marina

Port Opua New Zealand

Bay of Islands Marina is located in the beautiful Bay of Islands with an easy approach day or night to the customs and quarantine berths conveniently situated on the outer breakwater of the marina.

It is a full service marina with 400 berths. Live aboards are welcome.

There are hot showers, visitors lounge, pump out facilities, diesel fuel dock, wi-fi, and postal services. Bay of Islands Marina has all marine services within walking distance. Including travel lift, haulout and hardstand, catamaran haul out, boat builders, riggers, painters, refrigeration, mechanics electronics, chandleries, car hire, insurance, boat brokers, storage facilities, laundry and café.

Opua is located five minutes by road from Paihia, the heart of the Bay of Islands. It is 20 minutes from Kerikeri and the Bay of Islands Airport. It is a short water crossing to historic Russell.

Welcome to
Bay of Islands Marina.
The Easiest and
Primary Port of Entry
into New Zealand.



Bay of Islands Marina
28A Baffin Street, Opua, New Zealand
P: +64 9 402 5659 F: +64 9 402 6124
E: enquiries@boimarina.co.nz
VHF: Ch73 Call Sign: Bay of Islands Marina

For a comprehensive list of facilities and services turn the page.

CALL +64 9 402 7124

VISIT OUR WEB SITE BAYOFISLANDSMARINA.CO.NZ

MARINA SPECIFICATIONS

Berths	400
Sizes:	From 10.5 to 50 metres.
Draft:	Minimum 2.5 metres inshore low spring tide
Mast height restrictions:	None
Charges:	Varies per berth size - daily, monthly
Swing moorings:	35
Potable water:	All berths
Live aboards:	Welcome
Power:	240 volt, 50Hz, 16amp, 3 pronged marina type 67 3 pronged marina type 67 blue male connector. Electrical Warrant of Fitness required.

Seasonal rates apply. Call us or visit the website.

MARINA SERVICES

Haul Out & Repair Services

Slipway, travel lift, floating work jetty, professional boatbuilders at south end of marina. Phone or email for bookings.

Service Providers within Opua Marine Park

Boatbuilders, painters, joiners, engineers, electricians, riggers, sailmakers, chandlery, upholsterer, refrigeration, rental cars, motor mechanic, stainless steel fabrication, aluminium fabrication, marine insurance, yacht sales, canvas.

Security & Lighting

Gates locked. Access with security key, which also provides access to all facilities. Night time security patrols. CCTV security cameras oscillating 24/7.

Fuel

24 hour card service at diesel floating dock accepts EFTPOS and credit cards with a PIN number. GST exempt available for departing offshore vessels.

Marina Facilities

Showers, toilets, laundry, rubbish disposal and recycling facilities, waste oil container and used battery drop-off point. Storage units and BBQ area.

Dinghy Rack & Boat Ramp

Adjacent to the Boatramp.

Marina Office Services

Power cords and plugs, fuel, bus service, faxing, photocopying and Customs outbound packs.

GST EXEMPT RATES FOR OFFSHORE CRUISERS

Food & Alcohol

General store, cruising club and cafes near marina.

Duty Free 5 minutes from marina. Shopping centres: Paihia, 10 minutes by car, Kerikeri, 30 minutes by car, Whangarei, 1 hour by car.

Sewerage Pump-out

On fuel dock - free of charge. Universal fittings, water available.

Postal Services

Mail delivered to marina office for all vessels including courier delivery and pick up.

Public Transport

Taxi service. Shuttle bus to Bay of Islands airport. Bus service and ticketing in marina office to Whangarei, Auckland and onwards.

Bank & Cash Facilities

Bank, Paihia 8 kms. Cash facilities available from Marina Office.

Schools

Primary school, 200 metres walk. Secondary school, 20 minutes by bus.

A&E Centre, Doctor, Dentist

Paihia, 8 kms.

Car Parking

Parking available through marina office.

PORT OF ENTRY

The marina provides a free service including MPI restricted foodstuff disposal. The quarantine area is on the northern end of the marina, inside the outer breakwater.

FOR CUSTOMS

Contact Customs 09 402 7231 or visit www.customs.govt.nz/inprivate/arrivalbyprivatecraft/yachtsandsmallcraft

FOR MINISTRY FOR PRIMARY INDUSTRIES

Contact 029 602 1669 or visit www.biosecurity.govt.nz/enter/ships/yachts

BAY OF ISLANDS MARINA, 7 Baffin Street, Opua, Bay of Islands, New Zealand

P: +64 9 402 7124 F: +64 9 402 6124 E: enquiries@boimarina.co.nz

VHF: Ch73 Call sign: Opua Marina

bayofislandsmarina.co.nz

Recognised member



A large marina filled with numerous sailboats and motorboats docked at piers, with a city skyline visible in the background.

[illegible]

- 69. Chandlery**
- 70/75. Boat builders**
- 72. Marine Services/Transport**
- 74. Hospitality & Liquor Sales**
- 79. Bay of Islands Street Map**
- 80. Passenger & Vehicle Ferry Timetable**
- 82. Bay of Islands Marina Directory**
- 84. Medical**



Gulf Group

Marine Brokers Ltd

INTERNATIONAL YACHT SALES BROKERAGE

Specialising in marketing cruising vessels internationally throughout New Zealand and the South Pacific.

Advise on vessel importation, customs, duty & taxes.

Vessel caretaking & monitoring, experienced skippers & crew for deliveries locally and internationally.

See our boats on:



Bay of Islands Marina
Port Opua New Zealand

Contact:

Jason Brosnahan

Qualified Marine Yacht Broker

National Certificate Marine Brokerage

Ph: +64 9 402 7103

Email: jasonb@gulfgroup.co.nz



New Zealand's Largest Marine Brokers

Gain maximum buyer awareness for your boat with high profile marketing with New Zealand's leading marine brokerage for new and used boats.

www.gulfgroup.co.nz

Northland, Auckland, Tauranga, Wellington, Picton, Nelson, Christchurch

With 12 branches throughout New Zealand, Gulf Group offers you all these services

- buying • selling • insurance
- finance • valuations • sales berths
- advice for overseas yachts

Kia ora & welcome

This magazine has been produced with the aim of providing you with practical information about Opua and the Bay of Islands. We want you to have an enjoyable time in New Zealand and hope this guide provides a useful resource while you are here.

New Zealand's first port with a thriving community sheltered anchorages and good holding makes Opua the ideal safe destination. At Bay of Islands Marina, you will find a modern 400 berth marina, haul-out facilities with a 50 tonne travel lift as well a full complement of marine services. All located within easy walking distance to enable you to do everything from antifouling your boat to a complete refit, with places to stop for a coffee in between.

Bay of Islands Marina is located in the heart of the Bay of Islands; some of New Zealand's premier cruising grounds with world class fishing, top dive sites, hiking trails and cycle tracks.

Bay of Islands Marina is preferred for a range of reasons, not just that the clearance facilities are provided free of charge, but for their quality location. The quarantine berth is located on the northern end of the vast floating attenuator of the marina. A portion of this is specifically allocated to clearing vessels and can take up to 20 yachts at any one time. Customs Officials clear all boats on this facility. One of the recent additions to the services has been a floating toilet designed specifically for visitors who overnight on the quarantine facility. During peak season Bay of Islands Marina's Ambassadors' will be on the quarantine wharf to welcome you to New Zealand.



Peter Boyd
Chairman Opua Business Association



Chris Galbraith
General Manager Bay of Islands Marina

INSURE YOUR DREAM

Whether it's blue water, coastal, third-party or travel-medical insurance, we'll help protect what matters most to you.

Get a quote today:
www.themarinashop.com

The Marina Shop
Marine Insurance

Selling your boat?

Contact Vining Marine's nationwide network of experienced brokers via The Marina Shop.



CONTACT US AT: +64 9 402 6093 info@themarinashop.com 35° 19' / 174° 7' E

About the Bay of Islands

A diverse and sophisticated destination, the Bay of Islands is far more than a region of abundant natural charm.

Its subtropical climate lends itself to a diverse range of all-year outdoor pursuits (wonderful walks and ultra-challenging international standard golf courses, for example), but there are also many other fascinations, including a rich and extraordinarily well-preserved history and a burgeoning arts and cultural industry.

The Bay of Islands can justly be described as the cradle of the nation. At Kerikeri, the country's first mission station has left a precious legacy in Kemp House and the Stone Store, our oldest stone and wooden buildings. The Treaty House of Waitangi is a symbol of nationhood and partnership, while across the bay, Russell, our first capital, retains its original charm.

Built around such enviable assets are an ever-increasing list of New Zealand Tourism Award finalists and winners, testament to the professionalism and commitment of the tourism sector. Whether you chose to stay on your boat,

or your chosen accommodation is an exclusive, luxury lodge, character B & B, or a humble-but-comfortable backpacker establishment (or a myriad options in between), you can be assured of a warm welcome and the hospitality normally accorded to long-lost friends.

In the Bay, the marine entertainment possibilities expand immeasurably. Go swimming with dolphins, or explore one of the bay's 144 islands. World class big game fishing is a feature of the summer months, but huge snapper and other coastal species are a lure for anglers all year round.

Add wonderful restaurants and cafes, award-winning wineries, cheese and confectionery makers and outlets featuring the works of top artists and craftspeople and the picture of the Bay of Islands nears completion.

The Vava'u Island group in the Kingdom of Tonga
Year-round climate suitable for swimming, snorkeling, diving and sailing. Some islands are ringed by white sand beaches while others have tropical forests, sea-level caves, and dramatic limestone cliffs with breathtaking vistas.

vavau.TO

Online guide to Tonga



CRUISING PERFORMANCE PERFECTED

3Di OCEAN is a complete product line-up dedicated to and redefining cruising performance.



BAY OF ISLANDS

Unit 1, Building 1
Opua Marine Park
Opua, Bay of Islands 0442
64 09 402 5636

Offering North Sails Certified Service, Sail Assessment, Sail Cover / Stack Packs and Quotations for all offshore cruising boats that arrive in New Zealand.

northsails.com

Are you speaking to a sailmaker or a salesman?



Expensive mistakes are the biggest concern that sailmaker Roger Hall (pictured), who heads up the North Sails loft in Opuia, has about his industry today.

In thirty years Roger has seen sailmakers, bright ideas, and hot trends come and go, and he's concerned that the lines between racing and cruising sails are increasingly blurred, often to the detriment of cruising customers.

"We are seeing people make expensive mistakes," he says. "With so much choice, ironically it is a hard road for consumers with some unqualified and inexperienced people offering conflicting advice."

"With North Sails you can be confident that we lead the world on the race course, our cruising sails are exactly that, sails that are resilient and engineered specifically for cruising."

Roger, who has personally been involved in three America's Cup campaigns, and held a number of national sailing titles in dinghy classes, says that the North Sails product ranges are perfected over decades of cumulative improvement and development.

'String sails' which can be a good solution for race yachts that only need a few years of life from a sail,

can be disastrous for a cruiser. "On a remote island or on a passage trip the last thing a cruising sailor wants to be doing is trying to fix a delaminated string sail."

From the breakthrough material 3Di that is now widely used on offshore yachts, to Dacrons, laminated cloths, and Hydra net sails in radial format, North Sails offers a cross section of sails to meet budgets and needs.

"Undetected chafing can lead to a split mainsail, headsail with a torn out head web, and a halyard stuck up the top of the mast...and it always happens in the middle of the night."

You are welcome to book some time with us for a free visit to your boat, suggests Roger, who is based in easy walking distance to Opuia Marina. Then meet in the loft to draw up a work list and get a firm quote so you know where you stand. He offers a thorough inspection by a knowledgeable eye, which can prevent all sorts of problems.

"Undetected chafing can lead to a split mainsail, headsail with a torn out head web, and a halyard stuck up the top of the mast...and it always happens in the middle of the night."

NORTH SAILS BAY OF ISLANDS OPEN DAYS

NorthSails Bay of Islands will be holding a sail-repair workshop on Monday 16th November 2020 with practical demonstrations on fixing your sails. We will also update your Sail Repair Kit.

You must pre-book your space for this popular event as it is limited to 25 people.

Contact Roger on roger.hall@northsails.com or call him on **0275 251 891**, or drop by the loft on Baffin Street, Opuia.



GO BEYOND™



Kia ora and Welcome to Sailing in Paradise!

Sailing into the clear blue waters of northern New Zealand waters will bring a sense of blissful accomplishment - and make every mile you've travelled instantly worthwhile!



New Zealand is the strong and sturdy anchor to the South Pacific, providing a safe sailing haven where you will find first class marine services and a relaxed and comfortable lifestyle among soon-to-be-made friends.

Offshore sailors are welcomed from the moment they arrive into New Zealand waters and you will start to discover that this warm and welcoming hospitality is simply a part of the world-renowned 'Kiwi' experience, to be extended to you wherever you travel throughout the country.

Starting with a friendly greeting from our customs team, you will feel at home before you even reach your mooring.

And once ashore, we know that after all those long days at sea, there's nothing more appealing than a relaxing hot shower, fully equipped laundry, comfortable cruisers lounge and wifi to let friends and family know you made it! We want you to feel right at home, and our friendly team are there to help you with anything from where to get boat parts and repairs to where to buy delicious fresh food, including meat, fruit and veggies.

Once you've had a chance to find your bearings and settle in, you will look around to find yourself in one of the most pristine natural environments in the world, with stunning coastline perfect for exploring once you've had a chance to catch up on your sleep and enjoy being back on terra firma for a day or two!



While most sailors plan on coming for a season or two, some love it so much they never leave!

We welcome every boat like an old friend, and before long you'll find yourself having a drink or two with the locals, who will want to regale you with their tall tales from the sea as well as hear all about your voyage. When you're ready to hit the water again, the settled weather conditions in New Zealand provide ample opportunity for fair weather sailing and the summer months from October to April are particularly enjoyable, especially in the warm, sunny north.

There are boundless choices for day or voyage sailing from the Bay of Islands or Whangarei.

This stunning marine playground with endless islands to explore, proffers a new adventure every day, complete with safe, accessible anchorages and clean sandy beaches around every corner. You'll enjoy refreshing swims from your boat and delicious seafood and fish that you're able to catch and collect along the

way. Or, if you prefer, with your mask and snorkel, you can experience Northland's underwater world up close, with an array of sealife to discover.

Throughout your travels across the Pacific, you will have also heard that New Zealand is renowned for exceptional boat building and marine services - so if you've arrived with any concerns about your vessel, you're in the right place. Whether you need a refit, rigging, haul-out or any onboard repairs, Bay of Islands and Whangarei both offer a full complement of marine services for all vessels, including catamarans and superyachts. Even better, friendly marina staff will point you in the right direction, so you'll know you're getting expert advice from reputable companies. This means you can enjoy exploring the local area, knowing your boat is in safe hands and will be ready to head back out to sea when you are.

While most sailors plan on coming for a season or two, some love it so much they never leave!

With the option of secure long or short term berths, you may find yourself wanting to stay a little longer than planned. But don't worry - you'll find everything you need - excellent healthcare, high quality public schools (if you're here with your family) and all the other services and amenities you might need, including well stocked supermarkets, dentists, hairdressers and an airport if you need to make a trip back home.

So, now that you've arrived, what to explore first, you ask? Northland is all about sunshine and warmth (even in winter we don't get below 5 degrees Celsius) and lush subtropical forests, with stunning walk and cycleways all over the region. Wherever you go, you'll find people keen to stop and chat, go out of



TASTE: Northland is home to a huge array of fresh, locally grown produce as well as wines, cheeses, breads and chocolates. Sample from a fantastic selection of cafes and restaurants, and enjoy great coffee, delicious meat pies and yummy 'fish and chips' in most towns.



EXPLORE: Northland is one of the most beautiful sailing destinations in the world, and on land there is just as much beauty to discover, with countless walking and cycling tracks, lush subtropical and ancient native forests and beautiful rivers and waterfalls.



DISCOVER: Waitangi in the Bay of Islands is known as the 'birthplace of the nation', with the whole region steeped in history, most notably the coming together of the native Maori and the European settlers. Enjoy learning about the incredible Maori culture and its influence on New Zealand today.

their way to give directions and perhaps even invite you home to share a meal. You'll be hard-pushed to find a crowd or a queue, and you'll be blown away by the delicious, organic, home-grown fruit, veggies and meat from the local markets, made even tastier after your time at sea!

Northland is a narrow land mass with two contrasting coastlines - the east being calm and sheltered and the west being exposed and wild. Everywhere you look, the view is different. Take a drive up the west coast and discover Northland's incredible, ancient kauri forests and on to Cape Reinga, where, according to Maori oral history, the spirits of deceased Maori leap into the ocean to return to their ancestral homeland of Hawaiki. Or take a trip up the east coast and enjoy one stunning sandy beach after another. Swim, walk, fish, surf, kayak or soak up the sun to your heart's content.

There's local artists and galleries dotted right across the region and to learn more about the history of Aotearoa New Zealand, look no further than Waitangi - the birthplace of our nation's history. Waitangi offers an in-depth insight into the captivating Maori culture and a chance to learn about the events that have shaped New Zealand into the country it is today.

New Zealanders enjoy a way of life unlike anywhere else in the world, and you will find yourself relaxing into the slow pace, open friendships and enjoying the clean, natural environment. In fact, the longer you stay, the more friends you will make and the harder it will be to leave!

We look forward to meeting you at Bay of Islands Marina!



Boat hull cleaning

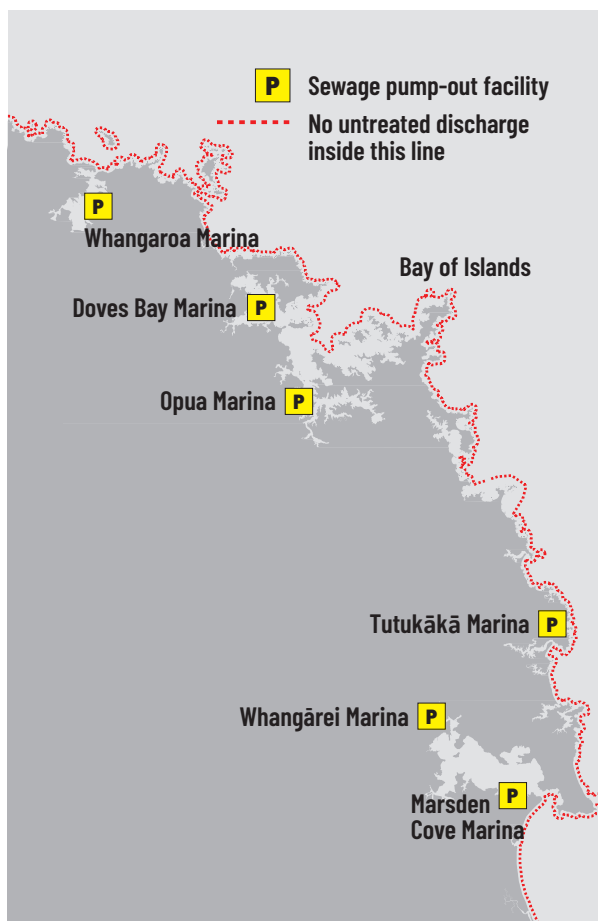
Hull maintenance and cleaning rules apply in Northland.

If in doubt, haul it out.

- » In-water cleaning can only be undertaken in certain areas and with no more than a slime layer. Cease and report immediately if you find marine pests.
- » No hull maintenance can be undertaken on the foreshore, including sanding, scraping, blasting, and painting.

For the full rules which apply visit www.nrc.govt.nz/boatcleaning

Northland
REGIONAL COUNCIL



Northland's boat sewage rules

Do you have a way to treat or contain your boat sewage?

It's illegal to stay overnight on your boat in Northland without a proper way of treating or containing your sewage.

Northland's harbours and bays are strictly 'no discharge' areas for untreated waste.

The best options to comply are:

- » a working treatment system, or
- » a holding tank, or
- » a portable toilet

For more info www.nrc.govt.nz/marinepollution

Northland
REGIONAL COUNCIL
Te Kaunihera ā rohe o Te Taitokerau

Information

Fishing, boat ramps, clubs & amenities in Northland

Fishing Restrictions

Finfish

Bag limits and size restrictions

In the North Region there is a combined daily bag limit of 20 of any combination of the following finfish (with no more than x5 Bluenose):

Finfish Species	Minimum fish length (cm)	Minimum set net mesh size (mm)	Minimum dragnet mesh size (mm)
Blue Cod	30	100	100
Blue Moki	40	114	115
Bluenose	-	160	100
Butterfish	35	108	108
Elephant Fish	-	150	150
Flatfish (except Sand Flounder)	25	114	100
John Dory	-	100	100
Kahawai	-	90	85
Parore	-	114	100
Porae	-	100	100
Red Cod	25	100	100
Red Gurnard	25	100	100
Red Moki	40	115	115
Red Snapper	-	100	100
Rig	-	125	150
Sand Flounder	23	114	100
School Shark	-	125	100
Tarakihi	25	100	100
Trevally	25	125	100

In addition to the combined limit, you can take a maximum of:

Finfish Species	Minimum fish length (cm)	Maximum daily limit per person	Minimum set net mesh size (mm)	Minimum dragnet mesh size (mm)
Eels	-	6	12	12
Grey Mullet	-	30	90	85
Snapper (SNA1)	30	7	125	100

In addition to the previously mentioned limits you may also take the following:

A combined daily limit of 5 (with no more than 3 Kingfish) of the following finfish

Finfish Species	Minimum fish length (cm)	Minimum set net mesh size (mm)	Minimum dragnet mesh size (mm)
Groper / Hapuku / Bass	-	160	100
Kingfish	75	100	100

No daily bag limit applies to the following finfish:

Finfish Species	Minimum fish length (cm)	Minimum set net mesh size (mm)	Minimum dragnet mesh size (mm)
Garfish (Piper)	-	25	25
Pilchard	-	25	25
Yellow eyed mullet	-	25	25
All others	-	100	100

Information sourced from:

www.mpi.govt.nz/travel-and-recreation/fishing/fishing-rules
Please visit website for comprehensive information.

Boat Ramps

Bay of Islands

Jacks Bay	Concrete
Opito Bay	Concrete, all tide
Opua	Concrete, all tide
Russell	Concrete, half tide
Tapaka Point	Concrete
Rangitane	Concrete
Waipapa Landing	Concrete, all tide
Waitangi River	Concrete, all tide

Marine Clubs

Bay of Islands Swordfish Club

Paihia & Russell (Big Game Fishing)
(09) 403-7857

Bay of Islands Yacht Club

Waitangi Club rooms
(09) 402 7897

Kerikeri Cruising Club & Marina

(09) 407 9434

Opua Cruising Club

See advert on page 74

Russell Boating Club

(09) 403 7822

Amenities

Bay of Islands Marina

Refer to page 2 for information on fuel, water, showers, sewerage etc...

Or visit:

www.bayofislandsmarina.co.nz

Visit www.nrc.govt.nz/onthewater to find:

- Rules for using our harbours and coast
- Marine reserve details
- Weather and tide information



Notes from the Harbourmaster

Haere mai – welcome to Northland's beautiful cruising coastal waters.

While it's been incredible cruising weather over summer 19/20, Northland's also had the worst drought on record – so we're hoping for more balanced weather over the 20/21 cruising season!

To help keep you and others safe on our waters, here are some local tips and advice.

There is a wide mix of vessels visiting and based in Northland, from kayaks through to large launches, ocean yachts and cruise ships. While enjoying the amazing scenery, keep an all-round lookout, and be aware of your own wake, and its effects, and of larger faster vessels coming up behind you.

New Zealand has no requirements for vessel registration or certification and training, which can and does cause problems, especially for the Harbourmaster! A good rule of thumb for your own safety is to assume other vessels don't know the rules, or have a patchy knowledge at best. Don't assume they have seen you and will take the correct action until they are clear. You may have sailed around the world safely, but busy water ways close to land are when to be cautious.

Another common mistake made regularly by visiting yachts is to anchor off pua in the nice calm of the morning, at low tide, and head off

to the shops. The tide comes in, the afternoon sea breeze comes up, and the boat heads off at a rate of knots through the mooring field. Those rushing to help generally find the anchor dangling vertically with just a few metres of cable out.

We're unsure if these visitors are from the Mediterranean, and how they managed to get here without noticing that there are tides. However, please allow for up to three metres of tide in Northland, changing weather conditions, and enough scope on your anchor cable for both. If you're headed off and leaving your vessel for anything other than a short stop, please rent a mooring or marina berth.

Dinghies also frequently wash up with no markings or name of mother vessel, which makes it difficult to return. A name helps.

Lastly please take extra care and keep your speed (and this includes tenders) and wake down around the marina and mooring areas. The fuel jetty, yacht club and marina entrance area can be an especially busy traffic point. Five knots, a fast walking pace, is the strict limit within 200 metres of the shore, or 50 metres of another vessel (so that includes mooring areas), and we are increasingly having to enforce this due to the volume of boats.

Local rules

Be sure you know the rules for Northland, as there are a few differences to international regulations.

Stay clear of ships. If your vessel is less than 500 gross tonnes you must keep clear of those over 500 gross tonnes within harbour limits. In the Bay of Islands this is cruise ships, and in Whangarei tankers and cargo ships.

Avoid crossing a ship's bow. If you can't avoid it, you need a minimum distance of 500m at the closest point of the crossing. And

bear in mind that big ships move faster than you might think!

Lifejacket rules. You must carry correct fitting lifejackets for each person on board for any vessel, and they must be worn when you're on a vessel 6m or less when underway, and in times of heightened risk (like bar crossings or bad weather).

You can find all Northland's rules in our Navigation Safety Bylaw on our website: www.nrc.govt.nz/maritime

Who to contact if there is a problem

For visiting yachts, knowing who to call when there's a problem or how to get local information can be confusing as it differs from country to country. Here's a summary of who's who in New Zealand.

Maritime New Zealand is the government agency with overall responsibility for boating safety in New Zealand.

Maritime Radio maintains VHF and HF radio services for our coastal waters and the South Pacific, providing around the clock monitoring for distress messages. It monitors VHF Ch. 16.

Search and rescue (SAR) has several agencies involved.

The Rescue Coordination Centre New Zealand (RCCNZ) coordinates national-level operations; for example, missing aircraft and offshore rescues.

New Zealand Police coordinates local SAR operations covering land and sea.

Coastguard Northern Region has a number of rescue boats spread throughout the region and monitors a network of VHF channels. Use Ch.16, *500 from a cellphone, or 09 3031303. www.coastguard.org.nz

Surf Life Saving New Zealand also assists in SAR operations and, as the name suggests, specialises in areas of surf.

Independent coastal radio channels. Russell Radio (Ch. 63) in the Bay of Islands, and Far North Radio (Ch. 60) provide local services on VHF for trip reports, weather forecasts and advice.

Northland Regional Council's Regional Harbourmaster (that's me) is responsible for Northland's navigational safety out to 12 nautical miles. My team maintains buoys and beacons, oversees local navigation safety rules, deal with wrecks and responds to any oil spills. If you see pollution or a safety issue on the water, call us on 0800 504 639 or email info@nrc.govt.nz

The harbourmaster's office is not a local emergency rescue service – that role is filled by the coastguard and police.

Before arriving or moving to the next harbour, make sure you have all the contact details you need, and relevant VHF channels to hand – see page 18 for more information, or see our freely available 'Boating in Northland' Booklet for more details. Charts are readily available at any chandlery.

Enjoy your time in Northland waters and stay safe!

Nga mihi nui

Jim Lyle

Regional Harbourmaster
Northland Regional Council

Get live wind and wave data for the Bay of Islands



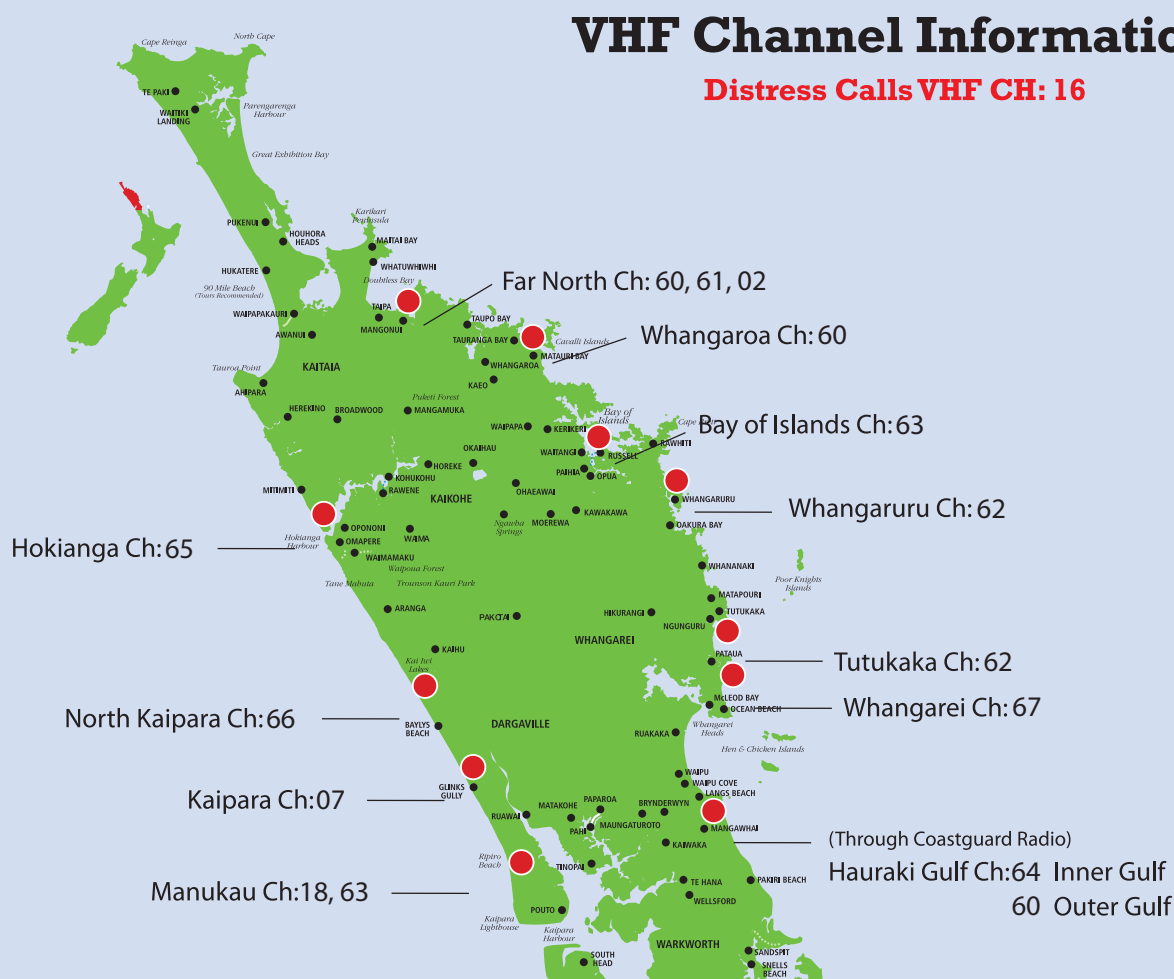
We've installed a live data buoy offshore of the Ninepin, to help you plan your coastal trips.

Northland
REGIONAL COUNCIL
Te Kaunihera ā rohe o Te Taitokerau

www.nrc.govt.nz/waves

Information

VHF channels, weather, tides & emergency services



Weather, Tides & Emergency Services

1 Metphone Weather Forecast

INSHORE:

Bay of Islands 0900 999 98
Auckland 0900 999 99

COASTAL:

Brett 0900 999 60
Colville 0900 999 61
Raglan 0900 999 75
Kaipara 0900 999 76

2 VHF Weather

MARITIME NZ RADIO:

0533, 0733, 1033, 1333, 1733,
and 2133 hours.

The forecast is announced on channel 16 and then broadcast on the area working channel.

3 Other Weather Sources

- National Radio: (AM and FM)
- Newspapers
- Local Radio & Private Radio
- www.metservice.com

4 Tide Source

www.linz.govt.nz

Use these online tables to find daily predictions of the times and heights of high and low waters at Standard Ports.

Times used in the tide predictions are in New Zealand Standard Time (NZST1). An allowance of plus one hour must be made during the daylight saving period (which commences on the last Sunday of

September and ends on the first Sunday of April the following year).

Note: (Opua) Bay of Islands comes under Secondary Port' tide tables.

www.metservice.com

Metservice provides tides for Russell and other areas throughout New Zealand. These tables have already been corrected for daylight saving time.

5 Emergency Services - Dial 111

- Ask the Telecom operator for the service you need. (**Police, Fire, Ambulance**)
- You can call 111 in an emergency from any phone 24-hours a day.
- It is free to call 111 from any phone in New Zealand, including from pay phones and cell phones.



Northland's Top 10 Must do's

Bay of Islands Marina

1 Twin Coast Discovery Highway

Although there is plenty to discover in Northland, we've made it very easy for you. Just follow the Twin Coast Discovery Highway, the circular touring route that lets you access all the region has to offer by way of a scenic relaxing drive.

2 The Poor Knights Islands

Off the Tutukaka Coast, the Poor Knights Islands Marine Reserve is a renowned divers' paradise, but equally as appealing to snorkellers and kayakers. There are more than 50 dive spots around the islands – underwater arches and tunnels and the largest sea cave in the world.

3 Embrace Culture & Heritage

Northland is rich in a unique history that tie both Maori and European people together. Historical sites and artefacts can be found throughout the region. Make sure you visit the Waitangi Treaty Grounds, the birthplace of New Zealand and the Kerikeri Stone Store.

4 Aquatic Bay of Islands

Golden beaches fringed by pohutukawa trees, secluded coves and turquoise water. This is where visitors and locals alike enjoy their favourite pastimes of boating, sailing, surfing, fishing or just lazing around in the warm sunshine.

5 Cape Reinga & 90 Mile Beach

Join a tour along 90 Mile Beach and toboggan down giant sand dunes at Te Paki Stream. Witness the meeting of the Tasman Sea and Pacific Oceans at Cape Reinga – a spiritual place for Maori where the spirits of the departed leap to begin the voyage back to their final resting place in the ancestral homeland.

6 Food & Wine

Northland is fast becoming the new frontier for gastro tourists, people who head off in search of fresh food experiences and delectable wines. Award winning chefs and funky barista jostle with stunning locations to serve you Northland's bounties.

7 Waipoua Forest, Day or Night

The giant kauri trees of the Waipoua Forest are some of the largest and oldest living rainforest trees in the world. Stand in awe at the base of Tane Mahuta – the 2000 year old 'Lord of the Forest'. Explore by day or enjoy a guided night tour.

8 Fishing

Game fishing legend Zane Grey described the Bay of Islands as the "Angler's Eldorado" and for the thousands of kiwis who rank fishing top of their favourite leisure activities, Northland, home to the legendary Ninety Mile Beach Snapper Classic, is the best place to cast a line.

9 Twin Coast Cycle Trail

Starting from Opua you must try this great trail to walk or ride. Enjoy farmland and scenic beauty. Explore old rail trails, tunnels and bridges. Pass by lakes and rivers. Discover the history and heritage of Maori and European settlements. Come for an hour, come for a day. Visit www.twincoastcycletrail.kiwi.nz

10 Swim with the Dolphins

Take a dive and meet some of the ocean's friendliest inhabitants... the dolphin. Take this incredible opportunity to swim with bottlenose dolphins in their natural environment. Interact with the dolphins, and observe their unique nature and personalities.

Bay of Islands Cruisers Festival

NOV
2020

Highlights include:

Pirates 'Fun' Race and Party, Talent Night (and Pizza), Boatyard Burger Night. A week of making friends, catching up with other cruisers, meeting the locals, learning new things and having fun!

Confirmed dates for event have not been set due to COVID-19.

Monitor www.boimarina.co.nz or our facebook page





Paihia Waterfront



Beach at sunset

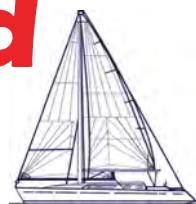


One of the many bays to explore

JB Marine Ltd

Opua Maina - Bay of Islands

**For all your
Marine Service Requirements**



Authorised Agents for Sales and Service



Engines, Drive Systems, Outboards, Electronics, GenSets, Pumps and much more
Full range of Anodes, Drive Belts, Fuel and Oil filters
All Technicians are Dealer Trained and Authorised
Certified Welders available
Fibreglass and Woodwork repairs

Located opposite the Opua Cruising Club, Unit 3 Powder Store Building, Baffin Street Opua
Email: service@jbmarine.co.nz

Technical/Engines Sales
James Dunlop-Christie
027 498 4842

Volvo Specialists
Barry and Marty
09 402 8375

Parts/Admin/Accounts
Tracey
09 402 8375

BAY OF ISLANDS AUTO AND MARINE

OPUA WORKSHOP BAY OF ISLAND MARINA

For all your Automotive and Outboard Motor servicing requirements.
Located opposite Opua Cruising Club at Unit 3, Powderstore Building, Baffin Street, Opua

Our Automotive Service Centre offers:

- Full service centre providing mechanical service and repairs on all cars, utes, trailers and generators
- Warrant of Fitness inspections
- Auto Electrics
- Air conditioning system re-gas

Our Outboard Service Division offers:

- Servicing and Repairs to all Outboard motor brands
- Sales and Service Agents for Suzuki and Honda Outboards
- Sales and service agents for Honda generators / converters
- Sales and Installation - Raymarine Electronics

We stock a wide range of fuel and oil filters, drive belts, oil, batteries, wiper blades and other accessories.



Contact:

Pete Norman - Manager of Outboard Service Workshop
Phone: 4026113 Email: service@opuaauto.co.nz

Be safe and enjoy boating in Northland



Wear your lifejacket

The majority of drownings happen in incidents with small boats.

Correctly fitted lifejackets must be worn in vessels six metres and under.



Keep to the speed limit

All boats must keep to 5 knots within:

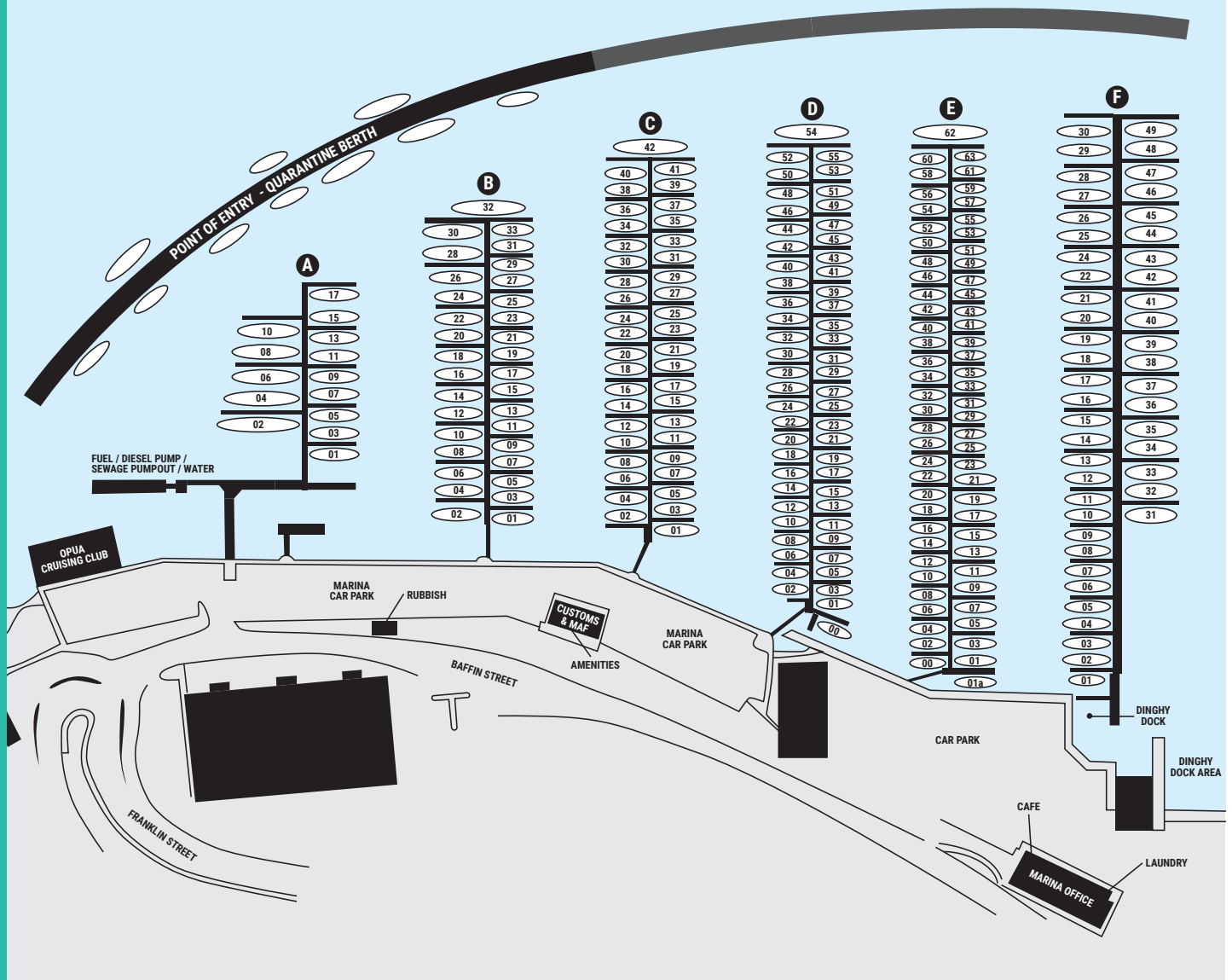
- » any mooring or marina area
- » 50 metres of other vessels
- » 200 metres of the shore, wharves or marine structures
- » 200 metres of a dive flag.



Find out more about our local rules nrc.govt.nz/safeboating

P 0800 002 004 E info@nrc.govt.nz

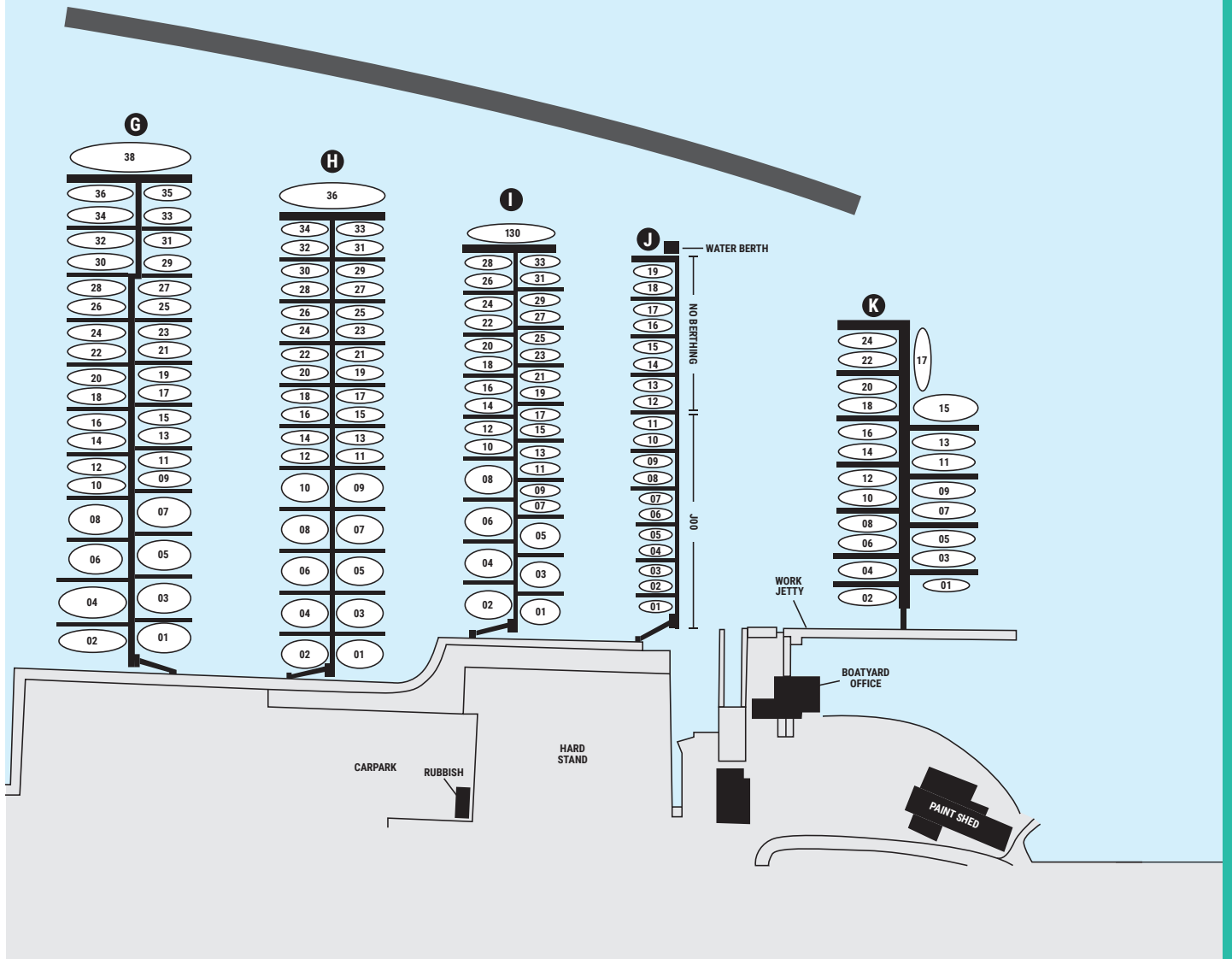
Northland
REGIONAL COUNCIL 
Te Kaunihera ā rohe o Te Taitokerau



Where to tie up...

Welcome to the Bay of Islands Marina, if you are arriving from an overseas port you will need to wait at the Quarantine Berth to be cleared by customs. If you are visiting from local waters please proceed to your assigned berth as shown on the plan above.





Bay of Islands events

APRIL

WAITANGI PRO AM GOLF TOURNAMENT

The Waitangi Golf Club Pro-Am Tournament is being predicted as the stand-out 'stop of the year'. A strong field of international golfers and one of the biggest contingents of Kiwi professionals in recent history have confirmed, as have several celebrities.

NORTHLAND CROSSING MULTI-SPORT CHALLENGE

Northern Crossing is a coast-to-coast multisport event that follows ancestral pathways from Kupe's first landing place almost 800 years ago from the Hokianga Harbour to Kerikeri. Competitors start with an 8km run, 80km bike ride and an 8km run. An optional 12km kayak leg is available.

MANGONUI FESTIVAL

Aptly named Last of the Summer Wine the Mangonui Waterfront Festival will be held on Waterfront Drive, Mangonui.

CAPE BRETT CHALLENGE

Challenges available to suit your level of fitness:

- Cape Brett classic 40km run
- Whangamumu loop 17km run/walk
- Kauri Ridge 13km run/walk

MAY

PUFF N PULL CARNIVAL KAWAKAWA

The Puff and Pull Carnival is a totally unique event. The day commences with a sponsored walk – Trek the Track. Followed by the feature event, to pull the vintage steam engine, Gabriel the length of the main street.

BAY OF ISLANDS COUNTRY ROCK MUSIC FESTIVAL

This annual Country Rock Festival features good music and friendship in the stunning setting of the Bay of Islands of New Zealand – one of the top tourist spots of the country. Each year the festival features more than 45 acts from New Zealand, US and Australia performing at multiple venues.

JUNE

PAIHIA HALF MARATHON

Starting and finishing at the Copthorne Hotel in Waitangi the course will take you back past Paihia town centre along the stunning Haruru Falls bush track and around the back road past the Waitangi golf course with its magical views of the bay of Islands.

JULY

KERIKERI INTERNATIONAL PIANO COMPETITION

Since its inception in 1987, the primary purpose of the KIPC Trust has been to present NZ's most recognised classical music competition for solo piano. It is held in the first week of July every second year at the Turner Centre in Kerikeri, a venue which boasts a 400 seat auditorium with a 9 foot Steinway grand piano.

RUSSELL BIRDMAN FESTIVAL

Drag Races (for men in frocks), Mini Ironman (all ages), Mural Painting, Amazing Race (a historical 'round town' challenge), Spaghetti Eating Competition, Dinghy Races, BBQ Cook-off Competition, Paper Planes, Birdman Jump and a load of prizes to give away.

AUGUST

BAY OF ISLANDS JAZZ & BLUES FESTIVAL

Musicians gather from all over New Zealand and overseas for the annual Bay of Islands Jazz and Blues Festival. Featuring more than 50 acts with street performances and evening shows in Russell, Paihia, Haruru Falls & Kawakawa.

OCTOBER

RUSSELL WALKING WEEKEND

This walking weekend with 22 walks to choose from over two and a half days. All walks leave from Russell and a few of them will involve a boat trip out to some of our fabulous islands where some of the walks are based.

COASTAL CLASSIC - DEVONPORT - RUSSELL

The Coastal Classic Yacht Race from Devonport Wharf to Russell Wharf, in the Bay of Islands, is New Zealand's premier fleet yacht race and has been held annually at Labour weekend since its inception in 1982.

IT FESTIVAL

Paihia Village Green

Catch it, Eat it, Live it, in this festival celebrating food and entertainment. Bands, performances, food eating and fishing competitions featured here.

NOVEMBER

BAY OF ISLANDS CRUISERS FESTIVAL

This is a free rally departing from any port in the Pacific between late October & early November. Cruisers head to Opuia events and seminars. Visit www.islandcruising.co.nz

KERIKERI HALF MARATHON

Commencing at Okaihau, and finishes in Kerikeri. This route is predominantly downhill, and a very popular event with people from all over the country participating. Followed by a Street Party.

DECEMBER

STATE BAY OF ISLANDS CLASSIC

There are swims organised for all levels:

- The 'Going Long' 3.3km Ocean Swim starts in Russell and finishes in Paihia
- The 'Step It Up' 1000m Ocean Swim which takes place on Paihia Beach
- The 'Give It A Go' 300m Ocean Swim which takes place on Paihia Beach.

JANUARY

TALL SHIPS RACE & CLASSIC INVITATION

Participation encouraged. On-water and post-race activities.

BOI SAILING WEEK

One of New Zealand's leading sailing regattas encompassing an action packed racing format across a huge range of vessel classes including Multi Hull and Passage classes for cruisers. The event lasts 4 days and includes a beach party day, evening prize givings and bands. Visit bayofislandssailingweek.org.nz

FEBRUARY

WAITANGI DAY & WAITANGI FESTIVAL 6 FEBRUARY

New Zealand's national day is celebrated with a public holiday and festivities at its birthplace in Waitangi. Events include music & performances, markets and Royal NZ Navy ceremonies.



APRIL - NORTHLAND CROSSING MULTI-SPORT CHALLENGE



JULY - RUSSELL BIRDMAN FESTIVAL



NOVEMBER - BAY OF ISLANDS CRUISERS FESTIVAL



DECEMBER - STATE BAY OF ISLANDS CLASSIC

36° BROKERS

Premier Brokerage - Multihull Specialists - NZ Beneteau Agent

36°
SERVICES



BENETEAU
OFFICIAL DEALERS

36° BROKERS

The team at 36° is highly experienced in local and international boat sales and perfectly positioned to access these markets across multihulls, monohulls, new boats, and power boat sectors.

With over seven years working exclusively with multihull brands and selling both new and used boats to clients in New Zealand and the wider South Pacific, 36° has built a reputation as multihull specialists as well as agents for Beneteau, while leading the field in brokerage sales and new boat commissioning.

Whether it is time to upgrade or sell, the team at 36° pride themselves on having the resource, experience and motivation to make it easy. High profile marketing and a network of industry contacts across the globe is harnessed to give you the best possible outcome while receiving world-class customer service every step of the way.

36° SERVICES

At 36°, we hope finding the boat of your dreams is just the beginning of a long and enjoyable relationship. That's why we offer a comprehensive suite of services in tandem with our brokering skills. If you should require any assistance with your vessel, we'll get all hands on deck to help while providing expert knowledge and advice that only comes with a lifetime's experience around pleasure craft.

- Beneteau After Sales Service
- Yacht Maintenance
- Support Services
- Insurance




Get in touch with the Team at 36° to discuss your requirements.

9 Westhaven Drive, Auckland
09 903 1001
info@36degrees.nz
www.36degrees.nz

Unit 1
Opua Wharf Maritime Building
Beechy Street, Opua
0800 363 347

Destination - BAY OF ISLANDS

An aerial photograph of a stunning coastal scene. In the foreground, a small, crescent-shaped bay with crystal-clear turquoise water is visible. A small white sailboat is anchored in the bay. The bay is flanked by two lush, green islands covered in dense forest. The water transitions from a vibrant turquoise near the shore to a deep blue further out. In the distance, more islands and a rocky coastline are visible under a clear sky.

Some say the average Kiwi has salt water in their veins, they just love getting out there on the water, sailing, racing, fishing, right down to kayaking and paddle boarding. Who can blame them when they live in a place as beautiful as New Zealand, clean clear blue water, awesome scenery a great climate and some of the best cruising grounds in the world. One of New Zealand's Maritime Jewels is the **Bay of Islands**. Situated on New Zealand's Northland Coast. The **Bay of Islands**, just 10 miles by 6 miles has it all; great fishing and diving, awesome sailing, a host of activities and above all dozens of safe, secure and scenic anchorages.

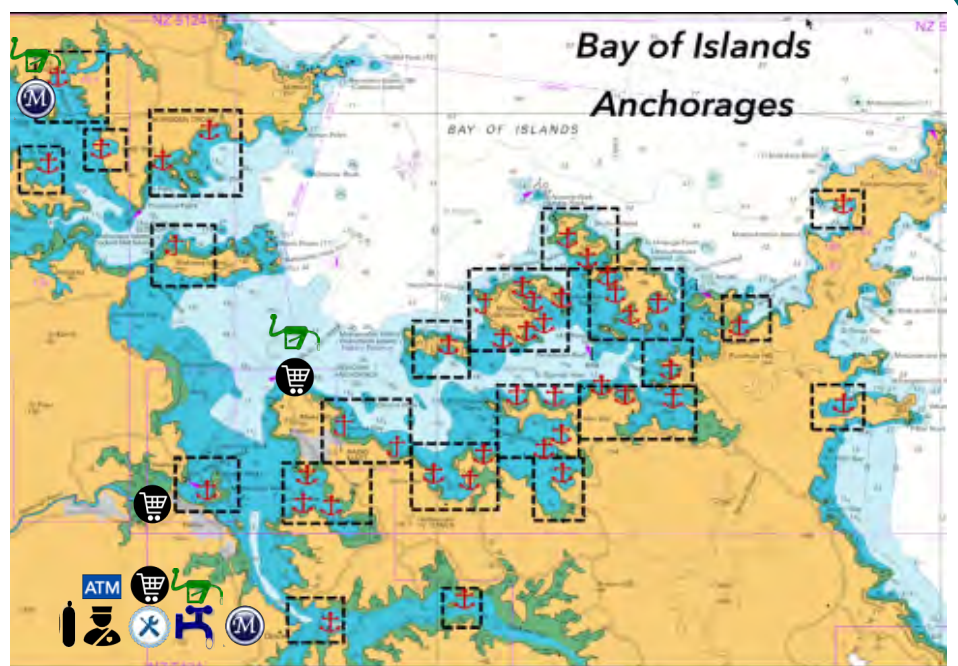
The **Bay of Islands** is also steeped in history, Cooks anchorage (in the foreground) on Motuarohia Island (Robertson), Russell, with the early sealers, whalers and traders, Honi Heki and the flagpole, the Treaty of Waitangi and the first seat of Colonial Government to name a few.

Getting your tongue around the Maori names can be fun & a challenge but you will quickly get used to them and there's often a contemporary name for most of the anchorages too.

So, welcome to **The Bay**; kick back, spend some time and enjoy yourself.

The Bay of Islands - View looking North
over Waiwhapupu Bay (Army Bay)
Looking towards Okahu Island

There are many stunning anchorages in the Bay of Islands and all the services a cruiser could need. Here we'll explore just some of those features.



Destination - BAY OF ISLANDS

ROBERTON I (MOTUAROHIA I)

Roberton Island - View looking east across the isthmus and lagoons from the Maori Pa site. DoC have recently built a new Lookout and constructed steps and a boardwalk

The main anchorage on is on the southern side of the island and is a popular spot. The Maori name for the island is Motuarohia Island, but it is commonly referred to as Roberton. The island is part private ownership and part Wildlife Reserve (the isthmus area bounding the anchorage and the hill area to the west as far as the Maori Pa site).

The isthmus area plays host to Dotterel and other ground nesting birds in spring and is often a restricted area at this time. The area also features three lagoons which are excellent for swimming at high tide. The western lagoon also features a snorkel trail.

The island is steeped in history and there are numerous information boards for explanation. A steep track runs up to the ancient Maori Pa site from which there are fabulous views.



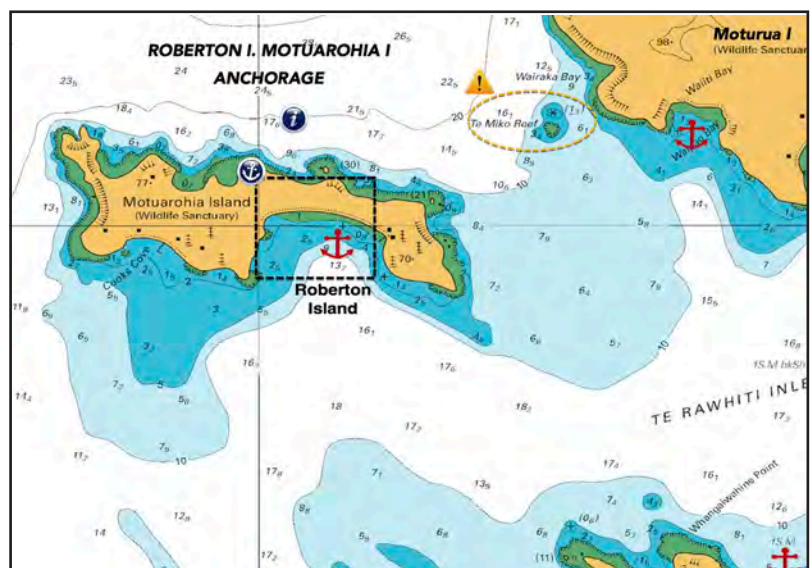
Roberton Anchorage **35° 14.00'S 174° 10.25'E**

This Anchorage is well protected in anything from the North. Holding 100m off the beach is good in sand. Anchor in 5.0m at the center of the beach and at the eastern end in 3.0m. Closer to shore there are patches of rock.



Caution

Te Miko Reef breaks at mid to low tide & only at high tide with a moderate lift



Destination - BAY OF ISLANDS

MOTURUA I - ARMY BAY



The next Island to the east is Moturua. There are five overnight and one day anchorages to choose from and lots to do on the island.

Waiwhapuka or Army bay is popular with the tourist boats with a white sand beach at the northern end and good access to the islands beautiful walks. Army Bay was used as an army training and coast watch station during WWII, the ruins of the old encampment can still be seen just in from the beach and the walk to the lookout is well worth the effort. The passage between Moturua and Motukiekie is shallow, 2.5m at low tide but has a sand bottom and good holding. Pack a picnic lunch and head around the island to Mangahawea Bay, another beautiful beach, some great snorkeling and perhaps some green lipped mussels off the rocks.

The round island walk takes about an hour and can be started at any of the anchorages.



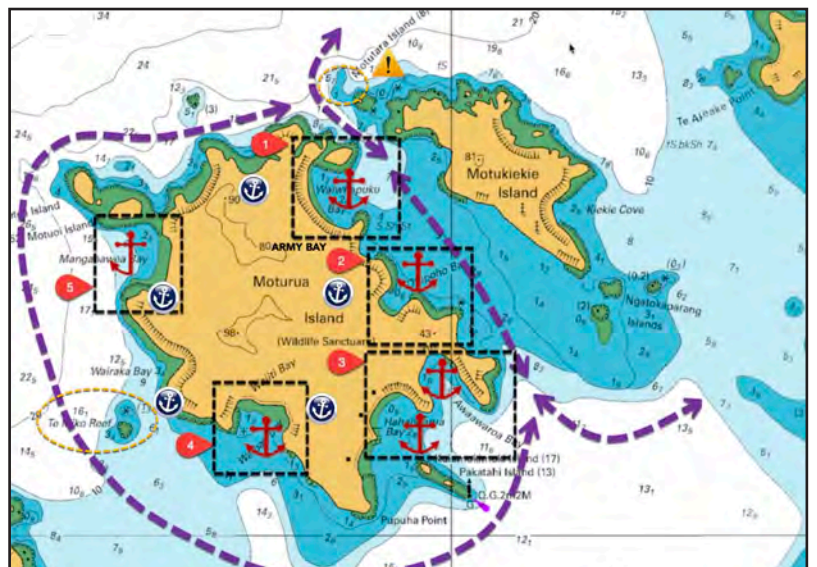
Army Bay Anchorage **35° 13.10'S 174° 11.70'E**

This Anchorage is well protected in anything from the South. Anchor in 3.0m. Holding 100m off the beach at the southern end is good in sand. There are patches of shingle at the northern end of the bay



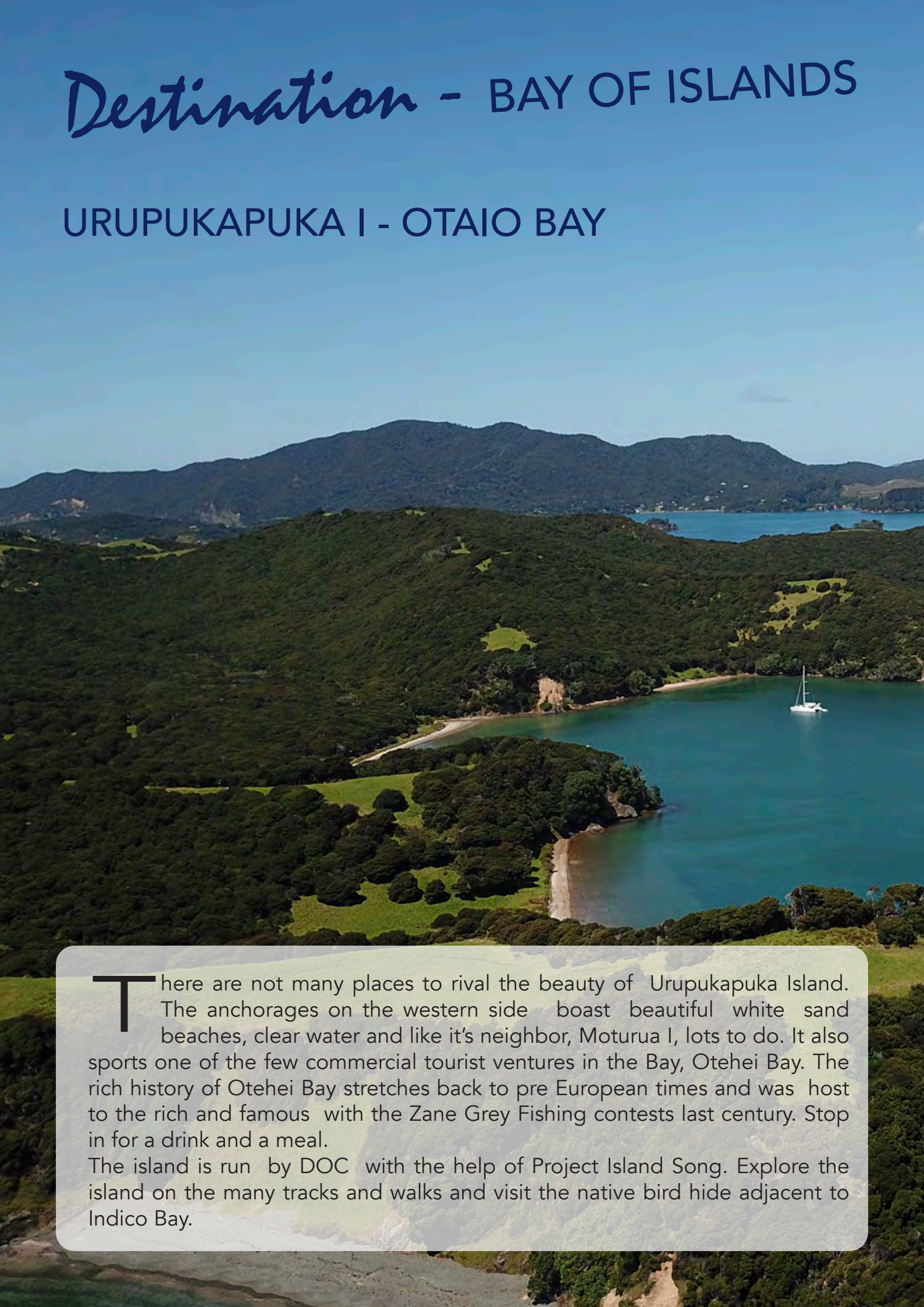
Caution

Just NW of Motutara Island lies a rock 1.2m at low water don't turn east too soon



Destination - BAY OF ISLANDS

URUPUKAPUKA I - OTAIO BAY



There are not many places to rival the beauty of Urupukapuka Island. The anchorages on the western side boast beautiful white sand beaches, clear water and like its neighbor, Moturua I, lots to do. It also sports one of the few commercial tourist ventures in the Bay, Otehei Bay. The rich history of Otehei Bay stretches back to pre European times and was host to the rich and famous with the Zane Grey Fishing contests last century. Stop in for a drink and a meal.

The island is run by DOC with the help of Project Island Song. Explore the island on the many tracks and walks and visit the native bird hide adjacent to Indico Bay.

Looking south over Otaio Bay to Paradise Bay and the mainland.



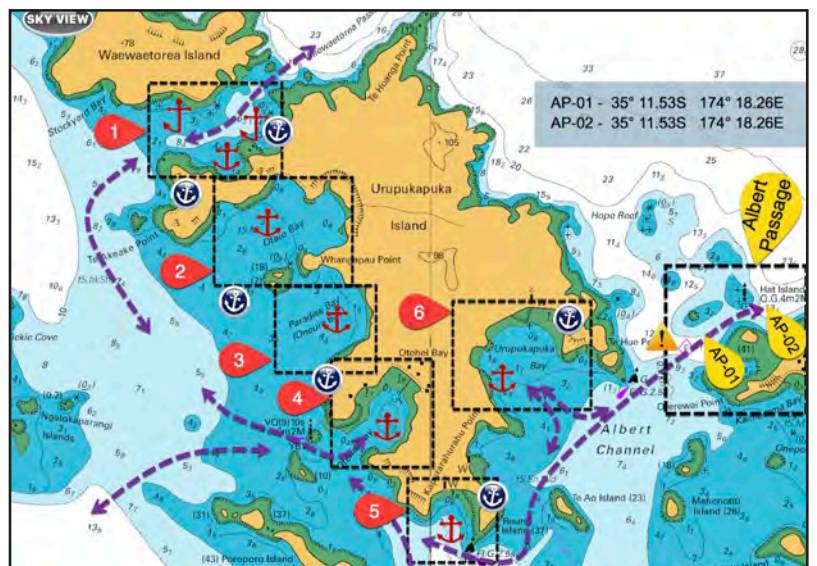
Otaio Bay Anchorage **35° 12.85'S 174° 13.44'E**

This Anchorage is protected in anything from the north and east. Anchor in 3.0m. Sand bottom. Holding is good in sand. There are patches of sea grass and weed closer to shore, avoid.



Caution

Watch out for the shallow patch just west of the reef off Te Akeake Point.



Destination - BAY OF ISLANDS

TE HUE BAY - OROKAWA ANCHORAGE



Te Hue Bay is one of the safest anchorages in the Bay of Islands. Consisting of three anchorages; Orokawa Bay, Assassination Cove and Opunga Cove, you may have to move around the bays as the wind clocks or backs around but is good in all wind direction, anchor in 5m on a stiff mud bottom with excellent holding.

This bay is a great hub from which to explore the whole bay area with only a short distance any of the dozens of great islands and bays, great fishing spots and numerous dive sites.

The bay is also known for it's bird song

Looking East over Orokawa Bay to
Opunga Cove and Assination Cove



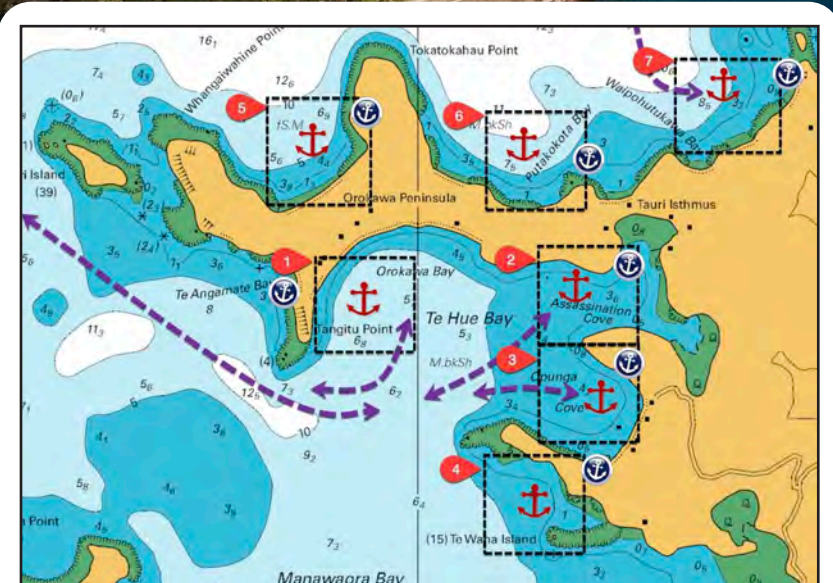
Orokawa Bay Anchorage **35° 15.30'S 174° 11.80'E**

Tucked inside Tanitu Pt. is one of the best all weather anchorages in the bay. Holding adjacent the Graveyard, 100m out is good in stiff mud. Shallow drafted vessels anchoring close in may experience a shale bottom with poor holding.

Land here has Riparian Rights



Cautions -
None



Images Courtesy Sail South Pacific Cruising Guides

Innovative and Easy to Use CRUISING GUIDES

All you need to Cruise With Confidence in the South Pacific



YACHTSMAN'S SOUTH PACIFIC - CROSSING PLANNER. This Planning App gives Cruisers, Migrating Across the Pacific, all the resources and Local Knowledge needed to plan their migration from Panama West.

POWER & SAIL NZ - CRUISING GUIDE -

Comprehensive Cruising Guide for the main NZ Cruising Areas.

SAIL FIJI - CRUISING GUIDE -

Comprehensive Cruising Guide for the whole of Fiji's waters & routes west and south.

SAIL TONGA- CRUISING GUIDE -

Comprehensive Cruising Guide for Tonga & routes west & south including Minerva Reefs.

Other Western Pacific Guides also available!

(iOS for iPad - Drill down for more info)

www.sailsouthpacific.com



Scan me



WILLISSAILS
BAY OF ISLANDS NZ

- NEW RACING & CRUISING SAILS
- REPAIRS, RECUTS & ALTERATIONS
- YACHTING ROPES

T: 09 407 8153 M: 021 786 080

4 NORFOLK PLACE, KERIKERI

info@willissails.co.nz www.willissails.co.nz

Contact us to make an appointment to come and see you.

SEAPOW

MARINE SERVICES SPECIALISTS - OPUA NZ

Mechanical Installation;- new, service, repair.

Engineering - Electrical - Plumbing

Marine Engines - Gearboxs - Generators

Project Management - Emergency Tow Service

**Friendly Service - Skill & Workmanship
To The Highest Standards!**

Located adjacent F - J docks - Bay of Islands Marina

**15 Baffin Street
Opua - BOI - NZ**

+64 9 402 8820 Intl.

09 402 8820 Local

sales@seapower.co.nz



www.seapower.co.nz



Paul Stringer is responsible for the day to day management of Bay of Islands Boatyard and Bay of Islands Marina.

He is trained as a boat-builder at Alexander Boats in Auckland, completing his apprenticeship in 1991. He has a trade certificate in ship, yacht and boat building, and his career includes management and logistics in a wide range of industries, including construction, transport and marine operations,

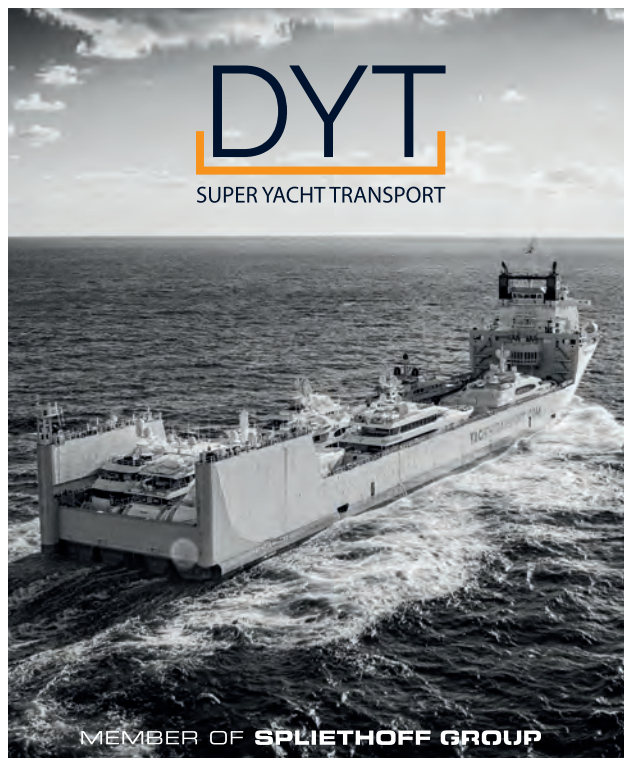
We hope that you will see his face around at some of the upcoming events...So please say hi...

If you miss Paul at the events in the islands, be sure to catch up with him in the Bay of Islands Marina. Or contact him paul@boimarina.co.nz



Paul Stringer

Bay of Islands Marina and boatyard manager



MEMBER OF **SPLIETHOFF GROUP**

oceans of time...

DYT Yacht Transport is the world's premier yacht logistics company, offering hassle-free yacht transportation to the world's most desirable cruising grounds.

DYT Time is our dedication to the DYT Sailing schedule. Our own float on, float off carriers allows us to set our own schedules, ensuring on-time departures and arrival of your yacht.

DYT Yacht Transport - New Zealand

Contact: Dave Ross

T: + 64 9 3090 229

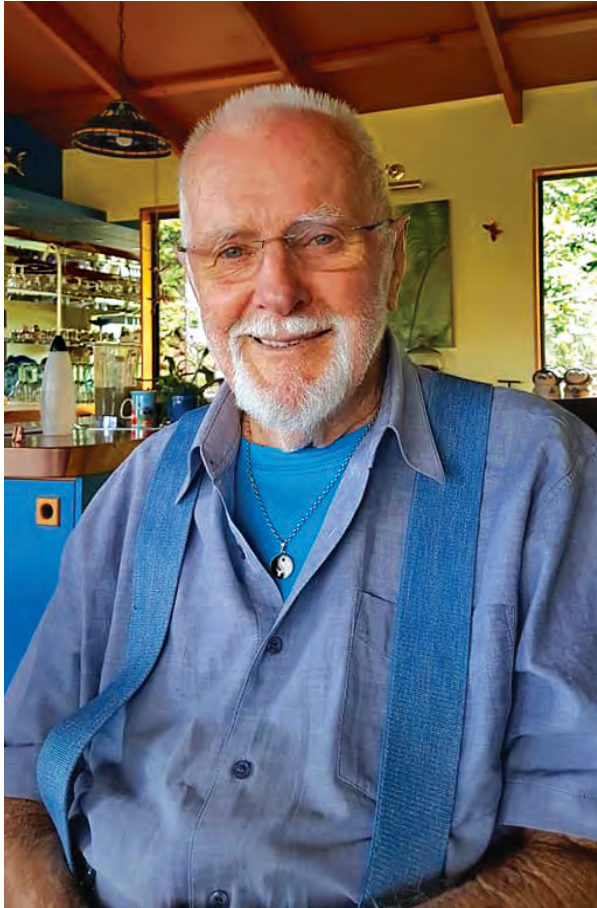
E: dave.ross@mckayshipping.co.nz

... to be on time

Brisbane, Auckland, Papeete, Ensenada, Golfoito,
Port Everglades, Palma de Mallorca

Departing annually in January

YACHT-TRANSPORT.COM



Brian Hepburn 1928 – 2020

It is with much regret that we advise the passing of our longest serving OBA Member, Brian Hepburn.

Since the Opuia Business Associations formation, Brian has been a stalwart member, chairman and active participant in discussion leading to the organisation we are today.

Brian also exercised his passion for Opuia on a more personal side as a founding member of the Love Opuia Group.

Our condolences go out to wife, Joan here in Opuia, to family across New Zealand and Australia and friends both land based and on the oceans of the world, he will be sadly missed.



Perfection is our standard!



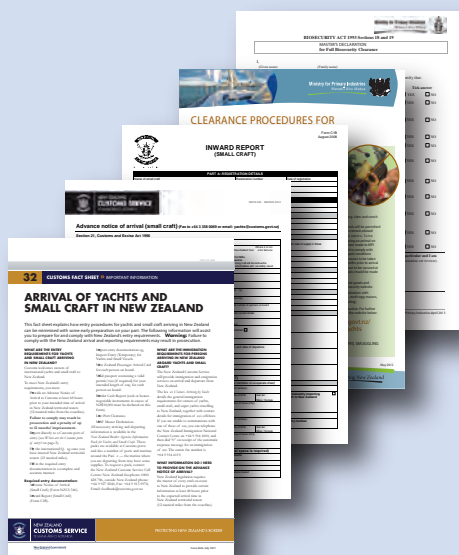
Total Yacht Care

a: Unit 7b Opuia Marine Park
e: enquiries@yachtcare.co.nz
p: 021 217 6064 (+64212176064)
OPUIA NEW ZEALAND

Care taking - Monitoring
Cleaning - Valet - Grooming
Sail - Power - Mono - Multi
www.yachtcare.co.nz

Arrival Pack

Customs &
Clearance
Information



Greetings And Welcome To New Zealand - *Nau Mai, Haere Mai Ki Aotearoa*

New Zealand Customs Service and Ministry of Primary Industries, Biosecurity NZ (MPIBNZ) welcomes owners, masters and crew of international yachts and small craft to New Zealand.

As an owner, master or person in charge of a yacht or small craft, you must meet entry requirements when arriving in New Zealand.

ARRIVAL NOTIFICATION

The master or person in charge of every craft is required to give advance notice of craft, crew and voyage details no less than 48 hours before the estimated time of arrival in New Zealand territorial waters (12 nautical miles from coastline.)

This should be done electronically by completing the NZ Customs Advance Notice of Arrival (small craft) Form NZCS340. You can do this online on Customs' website www.customs.govt.nz, available via the Visiting Craft section, and follow the links to small craft arrival and information. Or, email or fax the form to us prior to departing from your last port. Failure to comply may result in prosecution.

(Form included in 'Arrival Pack')

Email: yachts@customs.govt.nz or
Fax: +64-3-358 0069 (from overseas)

When nearing New Zealand, updated estimated arrival times can be relayed to NZ Customs and MPIBNZ by calling: Maritime Radio on 4125Khz or 6215Khz or VHF Ch 16, or Russell Radio Offshore Communications, on VHF Ch 16, (which they monitor).

On receipt of the advice, Customs and MPIBNZ officials will be contacted with the expected time of arrival. If your advised time of arrival changes, you are requested to notify the new time through the local maritime radio network (once in range of the intended port of arrival).

Entry to New Zealand through the Port of Opuia is free of 'Port of Entry' charges.

ADVANCE INFORMATION

The New Zealand Customs Service requires that you provide specific information prior to your arrival in New Zealand. For more on this refer to Fact Sheet 32

(Form included in 'Arrival Pack')

or available on the website www.customs.govt.nz.

Q-FLAG

Once you have entered New Zealand territorial waters (12 nautical miles) the International Q-flag must be clearly displayed.

Documents to be completed and forwarded prior to your arrival:

- Advance Information Sheet—Small Craft
- Inwards Report—Small Craft (optional).

Documents required to be presented on your arrival:

- Inwards Report—Small Craft
- New Zealand Passenger Arrival Card for each person on board
- Valid passport for every person on board
- Temporary Import Entry (TIE)—(refer Customs Fact Sheet 32)
- Border Cash Report
- Last Port Clearance
- MPIBNZ Masters Declaration.

(Form included in 'Arrival Pack')

IMPORTATION OF PROHIBITED AND RESTRICTED ITEMS

New Zealand has strict laws to protect its citizens and natural environment. Penalties may be imposed if you breach those laws by illegally importing:

- Illicit drugs
- Animal material, including artifacts (eg skin drums, raw bone carvings, feather fans etc)
- Live plants and plant material, including flower leis and wood carvings
- Firearms, weapons or ammunition
- Endangered species of flora and fauna and products derived from these endangered species
- Objectionable articles (indecent)
- Some food items, including meat, fruit, vegetables, eggs, dairy products, honey and stored products
- Some medicinal products including performance enhancing drugs.

In general, no live animals will be permitted inside New Zealand territorial waters without prior approval from MPIBNZ. Application to bring in animals should be made to MPIBNZ well in advance of any intended arrival. Full information on travelling with animals is on the MPIBNZ website: www.biosecurity.govt.nz

NOTE: This information was correct at the time of printing (June 2013). The New Zealand Government reserves the right to amend this information at any time.

HEALTH INFORMATION

Any visitors to New Zealand who have symptoms such as a combination of a high temperature, rash, cough, breathing difficulties, reduced mental clarity, severe diarrhoea or persistent vomiting or glandular swelling or jaundice, or who know of the presence of an infectious disease OR if such symptoms arise during their visit should immediately:

- Contact the Ministry of Health Healthline on freephone 0800 611 116 or
- Visit a general practitioner (lists of general practitioners are at the front of New Zealand's White Pages telephone books).

If there are any additional health requirements at the time of your arrival you will be informed.

OPUIA PORT INFORMATION

On arrival, tie up alongside the Customs & Quarantine "Q" Berth. This is the Opuia Marina, Breakwater pier @ approx. position of 35 18.8S 174 07.3E.

OPUIA CUSTOMS CONTACT



Gary Burton - NZ Customs Officer

Phone (Business and After Hours): 029-602-1669
Email: opuamarine@customs.govt.nz

OPUIA MPI BIOSECURITY CONTACT

Phone (Business and After Hours): 029-909-5504
Fax: (from within NZ) 09 402-5980
Email: mqsnld@mpi.govt.nz

For further New Zealand border information, visit:
www.customs.govt.nz
www.biosecurity.govt.nz



YACHT AND SMALL CRAFT ARRIVALS

The following information is to assist you to comply with New Zealand's entry requirements for yachts and small craft.

YOU NEED TO:

- » Provide an Advance Notice of Arrival to Customs at least 48 hours before arriving in New Zealand territorial waters (12 nautical miles from the coastline)
- » Report directly to a Customs port of entry (see page 2 for locations)
- » Fly the international Q-flag once you have entered New Zealand territorial waters (12 nautical miles)
- » Fill in the following required entry documentation:
 - › Advance Notice of Arrival (Small Craft) (Form NZCS 340)
 - › Inward Report (Small Craft) (Form C1B)
 - › Import Entry (Temporary) for Yachts and Small Vessels (Form C4G)
 - › Passenger Arrival Card for each person on board
 - › Border Cash Report (cash or bearer-negotiable instruments in excess of NZ\$10,000 must be declared on this form)
 - › Last Port Clearance
 - › Ministry for Primary Industries Master Declaration.
- » Pay your Border Clearance Levy of \$18.73 (including GST)

Each person aboard must have a valid passport containing a valid permit/visa (if required) for the intended length of stay.

All arrival and departure information is contained in the *New Zealand Border Agencies Information Pack for Yachts and Small Craft*. These packs are available on the Customs website www.customs.govt.nz at Customs ports of entry, and also a number of ports and marinas around the Pacific.

IMMIGRATION REQUIREMENTS

Customs will provide immigration and emigration services on arrival and departure. The leaflet *Visitors Arriving by Yacht* in the *New Zealand Border Agencies Information Pack for Yachts and Small Craft* details the general immigration requirements and contact details for immigration offices offshore.

If you are unable to communicate with one of these offices, contact Immigration New Zealand on +64 9 914 4100 or by fax on +64 9 914 4119.



ADVANCE NOTICE OF ARRIVAL

The master of every craft en-route to New Zealand must provide the following information to Customs at least 48 hours prior to the expected arrival time in New Zealand territorial waters (12 nautical miles from the coastline):

- » details of the craft
- » estimated date and time of arrival
- » the Customs port of entry where the craft will arrive
- » details of all crew and passengers on board
- » the name of the originating port and subsequent ports visited en-route to New Zealand.

Fill in the Advance Notice of Arrival (Small Craft) (Form NZCS 340) and email it to yachts@customs.govt.nz or fax it to +64 3 358 0069.

Failure to provide this information may result in prosecution and up to 12 months' imprisonment.

BORDER CLEARANCE LEVY

All craft that arrive or depart New Zealand must pay a border clearance levy. The arrival levy is \$15.79 (including GST), and the departure levy is \$2.94 (including GST) for each person on-board (including crew). An invoice will be emailed to you. Payment can be made by credit card online at <http://pay.customs.govt.nz>

Note: You can pay the levy for both your arrival and departure at the same time.

REPORTING TO CUSTOMS PORTS OF ENTRY

All craft arriving in New Zealand must first report to one of the following Customs ports of entry:

- » Opuā
- » Whangārei
- » Auckland
- » Tauranga
- » New Plymouth
- » Gisborne
- » Napier
- » Wellington
- » Nelson
- » Picton
- » Lyttelton
- » Timaru
- » Port Chalmers
- » Bluff

When you arrive at a Customs port of entry, you will be met by Customs and Ministry for Primary Industries officers. All people and goods must remain on board until the craft has been cleared. If arriving somewhere other than a Customs port of entry, the master of the craft must immediately report to a Customs or Police officer.



A more detailed description of Customs ports of entry is provided in the *New Zealand Border Agencies Information Pack for Yachts and Small Craft* or on the Customs website www.customs.govt.nz

TEMPORARY IMPORT ENTRY (TIE)

All goods imported into New Zealand, including yachts and small craft, are subject to Customs duty (where applicable) and goods and services tax (GST).

A Temporary Import Entry (TIE) accounts for importing and later exporting goods that will remain in New Zealand temporarily. This is up to 24 months for small craft. If you qualify for a TIE, you won't need to pay Customs charges. You will need to fill in a Temporary Import Entry for Yachts and Small Vessels form (Form C4G). By signing the declaration on the form, you agree that if your vessel doesn't leave New Zealand by the stated date, then Customs charges will be paid, or the vessel may be seized.

QUALIFYING FOR A TEMPORARY IMPORT ENTRY

For your vessel to qualify for a TIE:

- » you must be a genuine visitor
- » you must be a permanent resident of a country other than New Zealand
- » you must have arrived in New Zealand for a temporary visit
- » your vessel must not be sold or offered for sale in New Zealand without Customs' prior permission
- » your vessel must not be used commercially for hire, transport of cargo, or carrying passengers for reward while in New Zealand.

If you don't meet some of the requirements or don't qualify for a TIE, the Customs officer assisting you will work out the most appropriate entry requirement and/or tax.

OBTAINING A TEMPORARY IMPORT ENTRY

You will need to fill in the Customs Temporary Import Entry for Yachts and Small Vessels form (Form C4G) and give it to the Customs officer assisting with your arrival. This is a declaration and the information contained within this must be accurate.

You will then be granted a TIE period of 24 months for your vessel. If you would prefer to complete the process at a later time, talk to the Customs officer to see if alternative arrangements can be made. Your vessel must remain within the confines of the Customs Controlled Area at the port until the TIE has been completed.

TEMPORARY IMPORT ENTRIES FOR CHARTERING

A TIE may be granted for vessels that arrive in New Zealand for mainly recreational purposes but may be chartered for a short period of the stay. A TIE will be granted on a case-by-case basis and charter work must make up less than 65 percent of the vessel's time in New Zealand. You may also qualify for a TIE if you arrange a charter after arrival in New Zealand but you must advise Customs before arranging the charter.

GST is payable to Inland Revenue on any commercial activity such as chartering, and any goods and services supplied that are directly attributable to the charter will also be subject to GST.

Please contact Customs as soon as practicable (auckland.paxbaggage@customs.govt.nz) if your vessel is to be used for a charter while temporarily in New Zealand. Form C4G cannot be used for vessels used for charter and Customs will provide advice on the TIE process to be followed.



KEEPING RECORDS

You must keep the yellow copy of the TIE form while in New Zealand, and present it to the Customs officer on your departure.

Certain goods and services may be supplied to you without payment of GST and it is up to the seller/retailer/provider to decide if that is applicable. You will need to record all details of these purchases on the reverse side of the form.

If you decide, at a later date, that the vessel will stay permanently in New Zealand, the yellow copy of the TIE must be provided to a Customs officer at the time the paperwork is processed.

REQUESTING AN EXTENSION

If your circumstances change Customs will discuss the available options with you.

An extension of a TIE beyond 24 months may be granted for emergencies such as medical reasons or unforeseen circumstances. Requests will be considered on a case-by-case basis, and you must get in touch with Customs as early as possible.

If permission is granted for your vessel to remain in New Zealand longer than 24 months, Customs may require one of the following:

- » Customs charges paid if the vessel is imported permanently
- » a cash deposit or security to cover Customs charges. This will be returned, together with interest, provided the vessel leaves within the agreed date.

To request an extension call 0800 428 786 (0800 4 CUSTOMS), email:

auckland.paxbaggage@customs.govt.nz or speak to a Customs officer at your nearest port.

PERMANENT ENTRY

If you wish to permanently import your yacht or small craft it will be subject to duty and/or GST.

You must complete the Advance Notice of Arrival (Small Craft) (Form NZCS 340) and email it to yachts@customs.govt.nz or fax it to +64 3 358 0069 at least 48 hours prior to the expected arrival time in New Zealand territorial waters (12 nautical miles from the coastline).

If your yacht or small craft arrives in New Zealand permanently and there is duty and/or GST outstanding the vessel will be held within the port of entry until this is paid in full and the vessel is cleared.

MULTIPLE VISITS

Many visitors on yachts and small craft return to enjoy New Zealand. The TIE process applies each time you arrive in New Zealand provided your movements are not used as a means to extend the TIE period.

If your TIE period is about to end and you plan to return to New Zealand soon, a TIE may not be granted upon your return. Please consult with Customs for other options prior to leaving New Zealand.

ALLOWANCES AND PROHIBITED/RESTRICTED IMPORTS

A list of allowances or concessions, as well as prohibited and restricted goods is included in the *Advice to Travellers* brochure available in the *New Zealand Border Agencies Information Pack for Yachts and Small Craft* or on the Customs' website www.customs.govt.nz



GST FOR REPAIRS AND MAINTENANCE

Most goods and services in New Zealand attract goods and services tax (GST). You should contact Inland Revenue with any requests about GST-free supplies for repairs or maintenance of overseas yachts.

If you are not a New Zealand resident:

Non-resident Centre

Inland Revenue

Private Bag 1932

Dunedin 9045

New Zealand.

For all others:

Inland Revenue

PO Box 39010

Wellington Mail Centre

Lower Hutt 5045

Website: www.ird.govt.nz

MARITIME SAFETY CHARGES

Yachts and small craft are not subject to maritime safety charges but are subject to oil pollution levies if the craft is over 100 gross tonnes. If you decide to undertake a commercial operation while in New Zealand, you will be subject to both these charges regardless of the size of the vessel. Customs officers can discuss this with you at the time of your arrival.

FOR FURTHER INFORMATION

Contact your nearest office of the New Zealand Customs Service:

@ WEBSITE:
www.customs.govt.nz

f FACEBOOK:
www.facebook.com/NZCustoms

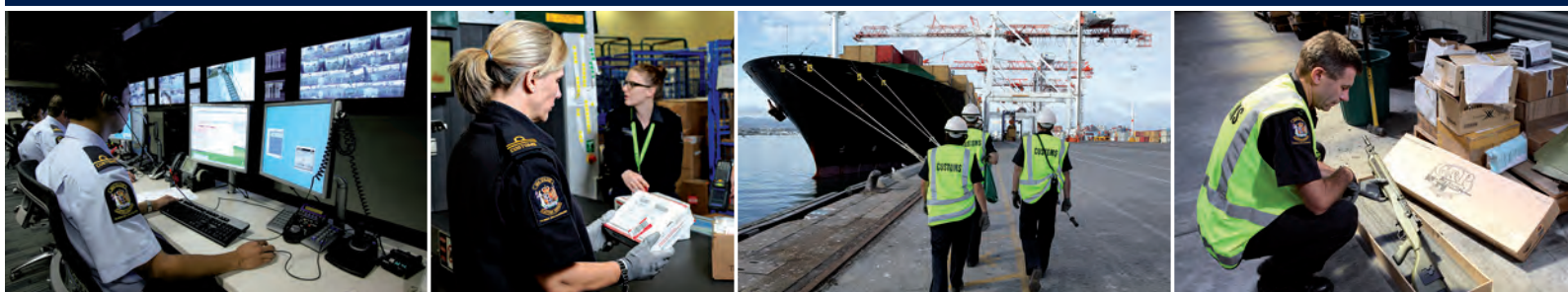
t TWITTER:
[@NZ_Customs](https://twitter.com/NZ_Customs)

☎ TELEPHONE:

0800 4 CUSTOMS (0800 428 786)
from within New Zealand

1800 301 861 within Australia

+64 9 927 8036 from the rest of the world.



BORDER CLEARANCE LEVY

PRIVATE AIRCRAFT AND YACHTS

From 1 January 2016 anyone arriving or departing New Zealand on a private craft will pay a Border Clearance Levy.

The New Zealand Government introduced the levy to fund border clearance activities to help keep New Zealand safe from harmful pests, people and dangerous substances.

The levy is \$18.21 on arrival and \$3.37 on departure – including GST.

Everyone on-board a private aircraft or yacht, including all crew members, must pay the levy. The only exemption is children under two years old.

ADVANCE NOTICE OF ARRIVAL

At least 48 hours before your craft arrives you must lodge an Advance Notice of Arrival (NZCS 340 or NZCS 344).

An invoice will be generated for the arrival Border Clearance Levy and will be emailed to the address provided on the Advance Notice of Arrival within five working days of your arrival. Full payment is required by the 20th of the following month.

Within five working days of your departure you will receive an invoice for the departure levy.

Aircraft – if you have a handling agent separate invoices will be generated for the arrival and departure levy and sent to your agent for payment.

Yachts (including super yachts and non-commercial passenger craft) – Customs will send the invoices to you directly or alternatively if you have an agent the invoices can be emailed to them for payment.

PAYMENT

Full payment is required by the 20th of the following month. Please reference the invoice(s) being paid.

You can pay by the following methods:

Online credit card payment

Pay on our secure online payment site using a Visa or MasterCard <http://pay.customs.govt.nz>
Online payments attract a fee of 1.9%, charged and collected by Westpac.



FACTSHEET 50

Internet banking

In the bill payments section, search for and select New Zealand Customs Service as the payee. Enter the Customs invoice number (top right hand corner of invoice e.g. BCL 4652498) in the 'Particulars' field.

Alternatively payments can be paid into the following account (referencing your invoice number(s)):

Account name New Zealand Customs Service
Account number: 03-0049-0000706-000
Bank name: Westpac Banking Corporation
New Zealand Government Branch
318 Lambton Quay
Wellington
New Zealand
Swift Code: WPACNZ2W

Any Customs office

We accept New Zealand currency, eftpos, Visa or MasterCard.

An additional 2.5% convenience fee (charged by credit card providers) will apply to credit card payments made to Customs in person, over-the-counter.

LATE PAYMENTS

If payment remains outstanding after the 20th of the following month, an additional levy of 8% of the unpaid amount, plus an additional 2% for each month that the amount remains unpaid, will be charged.

FURTHER INFORMATION

For invoicing enquiries email bclfinance@customs.govt.nz

FOR FURTHER INFORMATION

Contact your nearest office of the New Zealand Customs Service:

@ WEBSITE:
www.customs.govt.nz
f FACEBOOK:
www.facebook.com/NZCustoms
t TWITTER:
[@NZ_Customs](https://twitter.com/NZ_Customs)

☎ TELEPHONE:
0800 4 CUSTOMS (0800 428 786)
from within New Zealand
1800 301 861 within Australia
+64 9 927 8036 from the rest of the world.



BORDER SECURITY IS EVERYONE'S BUSINESS

It was local **knowledge and vigilance** that helped identify and capture the Rainbow Warrior bombers. The community have an even greater role in protecting our border today.

You know your area best, so let Customs know if you spot anything unusual or suspicious, including people or craft that seem out of place.

You can play a vital role in protecting New Zealand communities from international crime, illicit drugs, terrorism, smuggling, and other illegitimate activities **by reporting any suspicious border activity to Customs.**

CONTACT COASTWATCH
0800 4 CUSTOMS (0800 428 786)
free 24-hour, anonymous hotline
WWW.CUSTOMS.GOV.T.NZ



NEW ZEALAND
CUSTOMS SERVICE
TE MANA ĀRAI O AOTEAROA

PROTECTING NEW ZEALAND'S BORDER



Inward Report (Small craft)

PART A : REGISTRATION DETAILS

Name of small craft	Registration number	Date of registration
Country of registration	Port of registration	
Sail number	Home port	
Name of person in charge	Total number of persons on board	

PART B : ARRIVAL DETAILS

Port of arrival	Date of arrival	Time of arrival
Port arrived from	Estimated period of stay in New Zealand	

LIST PREVIOUS OVERSEAS PORTS (in order, last port first)

1.	2.
3.	4.
5.	6.

COMMERCIAL CARGO (Please record on a separate sheet and attach if additional space is required)

List all goods carried in or on the craft from a point outside New Zealand, whether in the course of international trade or for sale or supply in those goods, but excludes the personal effects of crew and passengers and stores for craft.

FIREARMS (Please specify makes, models and serial numbers)

Yes <input type="checkbox"/> No <input type="checkbox"/>	

CONTROLLED DRUGS/MEDICINES ON BOARD (Please specify name and quantity)

Yes <input type="checkbox"/> No <input type="checkbox"/>	

STORES ON BOARD

Spirits	Quantity
Beer	
Wine	
Cigarettes/tobacco	

SMALL CRAFT STATUS

Tick box that applies:

Visiting overseas craft <input type="checkbox"/>	Returning New Zealand <input type="checkbox"/> registered craft	Returning permanently <input type="checkbox"/> imported craft	Permanently importing craft to New Zealand <input type="checkbox"/>
	Built in NZ Yes <input type="checkbox"/> No <input type="checkbox"/>	Original import entry number	
	Duty Paid Yes <input type="checkbox"/> No <input type="checkbox"/>		

OFFICIAL USE ONLY

TIE Number	Entry number	Verified Yes <input type="checkbox"/> No <input type="checkbox"/>	Entry number
------------	--------------	---	--------------

PART C : CREW AND PASSENGER DETAILS (Person in Charge first)*(Please put surname in block letters and attach any additional details of crew members on a separate sheet)*

Surname		Surname	
First name/s		First name/s	
Nationality	Date of birth	Nationality	Date of birth
Passport number		Passport number	
Overseas contact address		Overseas contact address	
Next of kin, relationship		Next of kin, relationship	
Address/telephone of next of kin		Address/telephone of next of kin	
Surname		Surname	
First name/s		First name/s	
Nationality	Date of birth	Nationality	Date of birth
Passport number		Passport number	
Overseas contact address		Overseas contact address	
Next of kin, relationship		Next of kin, relationship	
Address/telephone of next of kin		Address/telephone of next of kin	
Surname		Surname	
First name/s		First name/s	
Nationality	Date of birth	Nationality	Date of birth
Passport number		Passport number	
Overseas contact address		Overseas contact address	
Next of kin, relationship		Next of kin, relationship	
Address/telephone of next of kin		Address/telephone of next of kin	
Surname		Surname	
First name/s		First name/s	
Nationality	Date of birth	Nationality	Date of birth
Passport number		Passport number	
Overseas contact address		Overseas contact address	
Next of kin, relationship		Next of kin, relationship	
Address/telephone of next of kin		Address/telephone of next of kin	

PART D : CRAFT DETAILS

Craft type Yacht <input type="checkbox"/> Motor launch <input type="checkbox"/> Other (Specify) _____				Design	
Yacht rig Cutter <input type="checkbox"/> Sloop <input type="checkbox"/> Ketch <input type="checkbox"/> Yawl <input type="checkbox"/> Schooner <input type="checkbox"/>				Mast construction Alloy <input type="checkbox"/> Timber <input type="checkbox"/> Composite <input type="checkbox"/> Other (Specify) _____	
Hull construction Steel <input type="checkbox"/> Alloy <input type="checkbox"/> Ferro <input type="checkbox"/> Cement <input type="checkbox"/> Fibreglass <input type="checkbox"/> Composite <input type="checkbox"/> Other (specify) _____					
Length Metres <input type="checkbox"/> Feet <input type="checkbox"/>		Beam Metres <input type="checkbox"/> Feet <input type="checkbox"/>		Draught Metres <input type="checkbox"/> Feet <input type="checkbox"/>	
Gross tonnage					
COLOURS					
Mast				Deckhouse/Superstructure (tops)	
Hull (above water line)				Deckhouse/Superstructure (sides)	
Hull (below water line)				Decks	
Dodgers/Sail covers				Sails	
ENGINE					
Make				Model	
Power (HP/Kw)				Passage speed under motor	
Fuel capacity				Fuel consumption	
ELECTRONICS					
Radar 1	Make		Model		Range
Radar 2	Make		Model		Range
SSB	Make		Model		Call sign
VHF	Make		Model		Call sign
HAM	Make		Model		Call sign
Cellphone	Make		Model		Number
INMARSAT voice	Make		Model		MMSA numbers
INMARSAT fax	Make		Model		MMSA numbers
INMARSAT data	Make		Model		MMSA numbers
GPS 1		Make		Model	
GPS 2		Make		Model	
Radar detector (CARD)		Make		Model	
Radar reflector		Make		Model	
SART		Make		Model	
EPIRB / PLB	Make	Model	HEX ID/UIIN		Country of Registration

RADIO SCHEDULES MAINTAINED

Frequencies	Times	Shore station

OTHER EQUIPMENT

Life raft	Make	Model	Capacity
Dinghy/tender	Make	Model	Length
	Make	Capacity	Colour
Outboard motor	Make	Model	Power (HP/Kw)

Flares

Parachute ☐ Hand held ☐ Smoke ☐ Other (specify) _____

ANY OTHER IDENTIFYING FEATURES

.....

.....

.....

Part E : OWNERSHIP DETAILS

Name of owner

Owners address

.....

.....

.....

Owners contact numbers	Telephone	Mobile phone	Facsimile	Email
-------------------------------	-----------	--------------	-----------	-------

DECLARATION

I, being the Person in Charge declare that all particulars stated in this Inward Report are true and correct.

Signature of Person in Charge Date

You are hereby advised that the information on this form is collected for the purpose of Customs clearance, monitoring the movement of craft and person, and border security. You must provide all information requested on the form. Failure to do so is an offence. The information you provide will be held by the New Zealand Customs Service pursuant to the Customs and Excise Act 2018. The Privacy Act 1993 provides rights of access to and the correction of personal information. You may gain access to and correct this information by contacting the New Zealand Customs Service, The Customhouse, 1 Hinemoa Street, PO Box 2218, Wellington 6140.

NOTES

Cash Reporting – NZ\$10,000 or more: If you are carrying, whether on yourself or in your baggage, cash and/or BNI with a TOTAL value of NZ\$10,000 or more (or the foreign currency equivalent) you are required under the Anti-Money Laundering and Countering Financing of Terrorism Act 2009 to complete a Border Cash Report.

BNI (Bearer negotiable instruments) include a bill of exchange, a cheque or bank draft, a promissory notes, a bearer bond, travellers cheques, stored value cards or travel cards, a money order, postal order or similar or any other negotiable instrument not already listed.

False, misleading, or non-reporting of cash may result in the forfeiture and seizure of the cash.

WARNING

There are heavy penalties under New Zealand law for the illicit importation and exportation of drugs.

DRUG TRAFFICKING IS NOT WORTH THE RISK

OFFICIAL USE ONLY	Attached
Passenger and crew details list/s attached	<input type="checkbox"/>
Craft photo/s (electronic or attached)	<input type="checkbox"/>
Arrival card/s	<input type="checkbox"/>



Advance notice of arrival (small craft) (Fax to +64 3 358 0069 or email: yachts@customs.govt.nz)

Section 12, Customs and Excise Act 2018

PERIOD OF ADVANCE NOTICE AND OTHER ADVICE					
<p>This form or the information on this form must be provided not less than 48 hours before the estimated time of arrival (ETA) of the craft in New Zealand. Where it is not possible to give such notice electronically (e.g. by email or fax), the notice may be given by some other means (e.g. by telephone). The New Zealand Customs Service Freephone contact number is 0800 428 786, outside New Zealand +64 9 927 8036.</p> <p>To avoid delays in processing, in addition to providing this Advance Notice of Arrival (Form NZCS 340), you should contact Maritime Radio on VHF channel 16, 2182khz, 4125khz, 6215khz or 8291khz, 12 hours prior to arriving at your nominated Customs port to update or confirm your ETA. Please ensure that Customs continues to be updated via Maritime Radio or directly to Customs at the port of arrival.</p> <p>You should also note that officers engaged in the clearance of arriving craft will discontinue the process if they encounter crew behaviour that they deem inappropriate or a compromise to safety. Delays in the completion of clearance formalities will inevitably result. Penalties for knowingly giving false or misleading information or failing to provide information required by law includes fines or imprisonment for up to one year.</p>					
PART A: CRAFT DETAILS					
Name of craft			Previous name (if known)		
Name of person in charge			Contact details		
Name of owner			Owner's address (Street number, street, city, country, email address)		
Name and address of charterer (if applicable)			Value of craft (NZ\$)		Date of purchase or construction
Country of registration		Port of registration		Registration number	
Gross tonnage		Sail number		Home port	
Radio call sign		Shore station or radio contact details			
Craft type: Yacht <input type="checkbox"/> Motor launch <input type="checkbox"/>		Length (overall) metres		AIS capability Yes <input type="checkbox"/> No <input type="checkbox"/>	
Other (Specify)				Number of Person on board	
Yacht rig: Cutter <input type="checkbox"/> Sloop <input type="checkbox"/> Ketch <input type="checkbox"/> Yawl <input type="checkbox"/> Schooner <input type="checkbox"/>		Hull type: Mono <input type="checkbox"/> Catamaran <input type="checkbox"/>		Hull colour	
Other (Specify)		Trimaran <input type="checkbox"/> Other (Specify)		Superstructure colour	
PART B: VOYAGE DETAILS					
Port of arrival		Estimated date and time of arrival		Port arrived from and date of departure	
				Craft's first time to New Zealand: Yes <input type="checkbox"/> No <input type="checkbox"/>	
LIST PREVIOUS OVERSEAS PORTS (Please list in sequence, last port first)					
1.		2.			
3.		4.			
5.		6.			
PART C: CREW AND PASSENGER DETAILS (PERSON IN CHARGE FIRST)					
<i>(Family name in block letters)</i>			<i>(Attach any additional details of crew members on a separate sheet)</i>		
Family name		First name(s)		Family name	
Nationality		Date of birth		Date of birth	
		Gender Male / Female		Gender Male / Female	
Passport number		Place of issue (City)		Passport number	
Date and place joining craft				Date and place joining craft	
Family name		First name(s)		Family name	
Nationality		Date of birth		Date of birth	
		Gender Male / Female		Gender Male / Female	
Passport number		Place of issue (City)		Passport number	
Date and place joining craft				Date and place joining craft	
PART D: COMMERCIAL CARGO (please record on a separate sheet and attach if additional space is required)					
List all goods carried in or on the craft from a point outside New Zealand, whether in the course of international trade or for sale or supply in those goods, but excludes the personal effects of crew and passengers and stores for craft.					
PART E: OTHER DETAILS					
FIREARMS / OTHER SELF-DEFENCE DEVICES		ANIMALS ON BOARD			
YES <input type="checkbox"/> NO <input type="checkbox"/>		Number of animals		Kind of animals	
				Country and port where loaded	

The Privacy Act 1993 provides the right to request access to, and correction of, personal information. If you want to exercise these rights please contact the New Zealand Customs Service on 0800 428 786 or email: feedback@customs.govt.nz or write to us at PO Box 2218, Wellington.



Advance notice of departure (small craft)

PART A : REGISTRATION DETAILS

Name of small craft	Registration number	Date of registration
Country of registration	Port of registration	
Sail number	Home port	
Name of person in charge	Total number of persons on board	

PART B : DEPARTURE DETAILS

Port of departure	Date of departure	Time of departure
Next overseas port	Intended date of return to New Zealand	Intended port of return
Intended itinerary	1.	2.
	3.	4.

COMMERCIAL CARGO (Please record on a separate sheet and attach if additional space is required)

List all goods carried in or on the craft, whether in the course of international trade or for sale or supply in those goods, but excludes the personal effects of crew and passengers and stores for craft)

FIREARMS (Please specify makes, models and serial numbers)

Yes ☐ No ☐

CONTROLLED DRUGS/MEDICINES ON BOARD (Please specify name and quantity)

Yes ☐ No ☐

STORES ON BOARD

Spirits	Quantity
Beer	
Wine	
Cigarettes/tobacco	

SMALL CRAFT STATUS

Tick box that applies:

Visiting overseas craft <input type="checkbox"/> Have you sold or otherwise disposed of any equipment from your craft while in New Zealand? Yes <input type="checkbox"/> Please provide details No <input type="checkbox"/>	Departing New Zealand craft <input type="checkbox"/>	Craft being permanently exported <input type="checkbox"/>
---	---	--

OFFICIAL USE ONLY

TIE Number	New Zealand Safety Certificate number	Export entry number
------------	---------------------------------------	---------------------

PART C : CREW AND PASSENGER DETAILS (Person in Charge first)*(Please put surname in block letters and attach any additional details of crew members on a separate sheet)*

Surname		Surname	
First name/s		First name/s	
Nationality	Date of birth	Nationality	Date of birth
Passport number		Passport number	
Overseas contact address		Overseas contact address	
Next of kin, relationship		Next of kin, relationship	
Address/telephone of next of kin		Address/telephone of next of kin	

Surname		Surname	
First name/s		First name/s	
Nationality	Date of birth	Nationality	Date of birth
Passport number		Passport number	
Overseas contact address		Overseas contact address	
Next of kin, relationship		Next of kin, relationship	
Address/telephone of next of kin		Address/telephone of next of kin	

Surname		Surname	
First name/s		First name/s	
Nationality	Date of birth	Nationality	Date of birth
Passport number		Passport number	
Overseas contact address		Overseas contact address	
Next of kin, relationship		Next of kin, relationship	
Address/telephone of next of kin		Address/telephone of next of kin	

Surname		Surname	
First name/s		First name/s	
Nationality	Date of birth	Nationality	Date of birth
Passport number		Passport number	
Overseas contact address		Overseas contact address	
Next of kin, relationship		Next of kin, relationship	
Address/telephone of next of kin		Address/telephone of next of kin	

PART D : CRAFT DETAILS

Craft type Yacht <input type="checkbox"/> Motor launch <input type="checkbox"/> Other (Specify)				Design			
Yacht rig Cutter <input type="checkbox"/> Sloop <input type="checkbox"/> Ketch <input type="checkbox"/> Yawl <input type="checkbox"/> Schooner <input type="checkbox"/>				Mast construction Alloy <input type="checkbox"/> Timber <input type="checkbox"/> Composite <input type="checkbox"/> Other (Specify)			
Hull construction Steel <input type="checkbox"/> Alloy <input type="checkbox"/> Ferro <input type="checkbox"/> Cement <input type="checkbox"/> Fibreglass <input type="checkbox"/> Composite <input type="checkbox"/> Other (specify)							
Length Metres <input type="checkbox"/> Feet <input type="checkbox"/>		Beam Metres <input type="checkbox"/> Feet <input type="checkbox"/>		Draught Metres <input type="checkbox"/> Feet <input type="checkbox"/>		Gross tonnage	
COLOURS							
Mast				Deckhouse/Superstructure (tops)			
Hull (above water line)				Deckhouse/Superstructure (sides)			
Hull (below water line)				Decks			
Dodgers/Sail covers				Sails			
ENGINE							
Make				Model			
Power (HP/Kw)				Passage speed under motor			
Fuel capacity				Fuel consumption			
ELECTRONICS							
Radar 1	Make		Model		Range		
Radar 2	Make		Model		Range		
SSB	Make		Model		Call sign		
VHF	Make		Model		Call sign		
HAM	Make		Model		Call sign		
Cellphone	Make		Model		Number		
INMARSAT voice	Make		Model		MMSA numbers		
INMARSAT fax	Make		Model		MMSA numbers		
INMARSAT data	Make		Model		MMSA numbers		
GPS 1	Make		Model				
GPS 2	Make		Model				
Radar detector (CARD)	Make		Model				
Radar reflector	Make		Model				
SART	Make		Model				
EPIRB 121.5/406mHz	Make		Model		Serial number (if 121.5 beacon)		

RADIO SCHEDULES MAINTAINED			
Frequencies	Times	Shore station	
OTHER EQUIPMENT			
Life raft	Make	Model	Capacity
Dinghy/tender	Make	Model	Length
	Make	Capacity	Colour
Outboard motor	Make	Model	Power (HP/Kw)
Flares Parachute <input type="checkbox"/> Hand held <input type="checkbox"/> Smoke <input type="checkbox"/> Other (specify) _____			
ANY OTHER IDENTIFYING FEATURES			
.....			
.....			
.....			
OWNERSHIP DETAILS			
Name of owner			
Owners address			
Owners contact numbers	Telephone	Mobile phone	Facsimile
Email			
DECLARATION I, being the Person in Charge declare that all particulars stated in this Advance notice of departure are true and correct. Signature of Person in Charge Date You are hereby advised that the information on this form is collected for the purpose of Customs clearance, monitoring the movement of craft and person, and border security. You must provide all information requested on the form. Failure to do so is an offence. The information you provide will be held by the New Zealand Customs Service pursuant to the Customs and Excise Act 2018. The Privacy Act 1993 provides rights of access to and the correction of personal information. You may gain access to and correct this information by contacting the New Zealand Customs Service, The Customhouse, 1 Hinemoa Street, PO Box 2218, Wellington 6140.			

NOTES

- 1 **Advance notice of departure timeframe:** You are required to deliver the Advance notice of departure to Customs not less than 4 hours before the intended time of departure of the craft.
- 2 **Cash Reporting – NZ\$10,000 or more:** If you are carrying, whether on yourself or in your baggage, cash and/or BNI with a TOTAL value of NZ\$10,000 or more (or the foreign currency equivalent) you are required under the Anti-Money Laundering and Countering Financing of Terrorism Act 2009 to complete a Border Cash Report.

 BNI (Bearer negotiable instruments) include a bill of exchange, a cheque or bank draft, a promissory notes, a bearer bond, travellers cheques, a money order, postal order or similar or any other negotiable instrument not already listed.

 False, misleading, or non-reporting of cash may result in the forfeiture and seizure of the cash.

WARNING

**There are heavy penalties under New Zealand law for the illicit importation and exportation of drugs.
 DRUG TRAFFICKING IS NOT WORTH THE RISK**

OFFICIAL USE ONLY

Attached

Passenger and crew details list/s attached

☐

Craft photo/s (electronic or attached)

☐

Departure card/s

☐

New Zealand Safety Certificate (for New Zealand registered small craft only)

☐



Don't bring marine pest hitchhikers to New Zealand on your boat

More than 200 introduced marine species are already established in New Zealand waters, and it's estimated up to 90 percent of them arrived as biofouling – the growth on the bottom of vessels.

Once established here, introduced species can have severe economic and environmental impacts.

Biosecurity NZ has requirements to help protect New Zealand's waters from further introductions.

Clean your hull

Most yachts visiting New Zealand should comply with the requirements by cleaning the hull less than 30 days prior to arrival. Before you leave for New Zealand, either haul out and clean your boat, or if this is not possible, clean it in water in accordance with local regulations. Be sure to clean all niche areas, including the keel, rudder area and hull fittings of all fouling. Most importantly, be sure to retain documentation of all cleaning activities, including receipts from haul outs and/or photos of the cleaned hull and niche areas.

Antifouling (bottom paint)

Upon arrival to New Zealand, you will be asked to show evidence that your vessel has a current antifouling coating. This evidence can include receipts for purchase or application of antifouling paint, and/or records of paint application in your vessel's log book.

Keep records

It is important to keep good records of biofouling maintenance, as this is how you will prove compliance with MPI's requirements. Acceptable records include:

- antifouling paint details;
- the date, location and facility/person that carried out the last dry docking/haul-out and antifouling;
- receipts from marinas, haul-out facilities and paint suppliers;
- date-stamped photos or videos of the hull and niche areas following cleaning.

Inspectors will request this information on your arrival in New Zealand to assess whether your boat complies with the biofouling requirements.

If you intend to clean your hull on arrival

If you are bringing your vessel to New Zealand for maintenance, you can comply with the requirements by booking an appointment for your boat to be hauled out at a Biosecurity NZ-approved facility within 24 hours of your arrival to New Zealand. Vessels that intend to comply in this manner do not need to clean their vessel prior to arrival. See the Biosecurity NZ website for a list of approved haul out facilities.

Boat responsibly

Once you arrive in New Zealand, you should be aware of local rules regarding biofouling.

Some regions within New Zealand have put in biofouling rules in order to prevent the spread of marine pests throughout the country.

Check with regional councils in your intended destinations within New Zealand to see if you need to take any special precautions before visiting: marinepests.nz

Biosecurity NZ officers can now issue infringement notices to commercial and recreational vessel operators that don't meet their biosecurity obligations.

- The infringement notices cover lower-level offences that would have required prosecution to enforce in the past;
- Failure by an operator to provide notice of a vessel's arrival in New Zealand.
- Failure by an operator to respond to an official request to declare what has been done to comply with risk management requirements (eg. biofouling rules).

The penalties are \$400 for an individual and \$800 for a corporation.

Biosecurity NZ still has the option to prosecute if necessary.

The new fines emphasise the importance of keeping unwanted pests and diseases out of New Zealand.



For full information on the entry requirements for yachts and other cruising vessels visit: www.biosecurity.govt.nz/importing/border-clearance/vessels/arrival-process-steps/yachts-and-other-recreational-vessels

Important information from Biosecurity New Zealand

New Zealand has introduced requirements to minimise the risk of marine pests entering as biofouling. These rules require all arriving vessels to provide evidence of biofouling management prior to arrival in New Zealand.

Compliance with these requirements will be based on the vessel masters' ability to produce documentation proving that biofouling has been managed. As most yachts come to New Zealand for extended periods and/or visit ecologically sensitive areas, it is recommended that yacht owners comply by cleaning their vessel's hull and niche areas prior to arrival. Yachts coming to New Zealand for refit or repair can comply by booking an appointment for haul out at an Biosecurity NZ-approved facility within 24 hours of arrival.

For full information on the standard, including guidance on how to comply, visit: www.biosecurity.govt.nz/importing/border-clearance/vessels/arrival-process-steps/biofouling/biofouling-management



Don't bring hitchhikers to New Zealand on your vessel

The threat: Exotic pests, such as red imported fire ants and mosquitoes, could affect human health and seriously harm New Zealand's economy and unique environment. Many insect pests can fly, meaning that they do not have to be physically transferred from a vessel to the land to establish a population. You could unknowingly be carrying a variety of pests on board.

What are hitchhikers?

Hitchhikers are insects and animals that arrive on your vessel – sometimes in small numbers undetected and sometimes in swarms. Some such as moths can lay their egg masses on the vessel. Some termites and borer beetle can live in the wooden parts of the vessel structure. Some may build nests (ants) or inhabit standing water (mosquito larvae).

Some common hitchhiking pests found on ships and yachts at New Zealand ports are ants, termites, beetles, mosquitoes, wasps and bees.

Exotic termites have been found on recreational vessels arriving into New Zealand. These are usually found in wooden structures and fittings when vessels are undergoing refit.

Arriving vessels have also been found carrying exotic ants. They pose a risk to public health, agriculture and horticulture and can become significant urban pests.

There are numerous interceptions of exotic mosquitoes at ports each year including the Asian tiger mosquito (*Aedes albopictus*) which can spread a number of diseases such as Dengue fever and Ross River Virus.

You can help prevent the spread of hitchhiking pests to New Zealand

Prior to leaving your last port check your vessel for pests (insects and other animals). Pay attention to decks, holds, and galleys or other areas where food is found, as well as warm areas such as near engine rooms. Also check wooden structures and packing for insect damage by wood-borers or termites.

Kill or remove all pests found on board. Use a knock-down insecticide containing permethrin to kill insects and use baited traps for vermin. Also traps could be used for crawling insects such as ants.

Undertake a regular pest management programme and keep a look out for pests during your voyages.

Mosquitoes may breed in water on board such as in saucers under pot plants and in tyre fenders. Remove standing water by drilling drain holes in objects such as tyre fenders. (Add chlorine bleach to water which you suspect may contain larvae).

If you have a pest infestation or something you cannot deal with before arrival, declare this in your Advance Notice of Arrival form

and report it to a biosecurity inspector on arrival in New Zealand. They will assist you with removal of the pests or treatment of your vessel.

Biosecurity NZ officers can now issue infringement notices to commercial and recreational vessel operators that don't meet their biosecurity obligations.

- The infringement notices cover lower-level offences that would have required prosecution to enforce in the past:
- Failure by an operator to provide notice of a vessel's arrival in New Zealand.
- Failure by an operator to respond to an official request to declare what has been done to comply with risk management requirements (eg. biofouling rules).

The penalties are \$400 for an individual and \$800 for a corporation. Biosecurity NZ still has the option to prosecute if necessary.

The new fines emphasise the importance of keeping unwanted pests and diseases out of New Zealand.

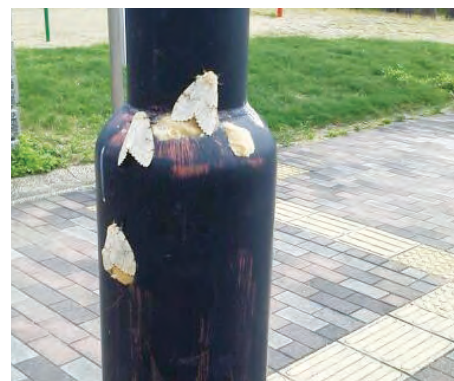
www.biosecurity.govt.nz/importing/border-clearance/vessels



Drywood termites



Asian tiger mosquito



Asian gypsy moth and egg mass



Clearance procedures for yachts and pleasure craft

Biosecurity New Zealand is responsible for ensuring unwanted pests, diseases and other organisms are prevented from entering New Zealand.

You must arrive at one of New Zealand's approved places of first arrival, where a biosecurity inspector will inspect and clear your vessel and passengers for entry into New Zealand.

Once inside New Zealand waters (12 nautical miles from the coast) please ensure all rubbish is contained in closed leak-proof containers or sealed in strong plastic bags. A biosecurity inspector will direct the disposal of all your rubbish on arrival.

As soon as possible, you must notify Maritime NZ Radio on 4125 kHz or 6215Khz or VHF Ch 16 of your expected arrival time. On contact, ask the radio operator to notify New Zealand border agencies (New Zealand Customs Service and MPI) of your ETA and intended port of entry so they can prepare for your arrival.

The main entry ports are:

- Opuia Marine Park, Opuia
- Marsden Cove Marina, Whangarei
- Viaduct Harbour Marina, Auckland (superyachts only)
- Westhaven Marina, Auckland (yachts less

than 22m only)

- Vessel Works Marine Precinct, Tauranga
- Port of Marlborough, Picton
- Lyttelton Port of Christchurch, Lyttelton.

Documentation required at first place of arrival

Border Passenger Arrival Card

Every person entering New Zealand must complete a personal declaration. Any quarantine risk item must be declared.

Master's Declaration

The vessel Master must complete a declaration of all risk items aboard that are either restricted or prohibited.

If you surrender all prohibited goods (or have them treated if an option) you will receive a full biosecurity clearance to cruise New Zealand waters.

If this option is not taken, the vessel will remain at the designated berth under biosecurity control.

Under the Biosecurity Act 1993, smuggling attracts heavy penalties.

Biosecurity NZ officers can now issue infringement notices to commercial and recreational vessel operators that don't meet their biosecurity obligations.

- The infringement notices cover lower-level offences that would have required prosecution to enforce in the past:
- Failure by an operator to provide notice of a vessel's arrival in New Zealand.
- Failure by an operator to respond to an official request to declare what has been done to comply with risk management requirements (eg. biofouling rules).

The penalties are \$400 for an individual and \$800 for a corporation.

Biosecurity NZ still has the option to prosecute if necessary.

The new fines emphasise the importance of keeping unwanted pests and diseases out of New Zealand.

Risk items that are either restricted or prohibited entry may include:

- » **FOODSTUFFS** including meat, fruit, vegetables, eggs, dairy products, honey and stored products. Note: It is very important that any uneaten fruit is sealed in closed containers or plastic bags ready for disposal on arrival. New Zealand has had four incursions of the Queensland fruit fly in the past three years and fruit is the main means of entry for this significant horticultural pest.
- » **RUBBISH** – particularly food waste.
- » **PLANTS** – no plants or parts of plants may be landed in New Zealand.
- » **CITES** (endangered species items), e.g. clam and conch shells, coral, turtle shells and ivory.
- » **LIVE ANIMALS** – in general no animals will be permitted to come ashore in New Zealand or to remain aboard a vessel in New Zealand territorial waters. Some exemptions may be granted for keeping an animal on board where prior application has been made to MPI and the person in charge has agreed to comply with conditions

set. There are specific import conditions for dogs and cats. These include measures to be taken against rabies between 7 and 12 months prior to arrival. Non-compliant dogs and cats will have to be secured at anchor. Application to bring in animals should be made to MPI well in advance. Full information on risk and prohibited goods and travelling with animals is on the biosecurity website.

- » **HITCHHIKERS** – Any known contamination with hitchiker organisms (termites, ants, moth egg masses, spiders, mosquito larvae, hull biofouling).

For more information on entry requirements visit:

www.biosecurity.govt.nz/importing/border-clearance/vessels/arrival-process-steps/yachts-and-other-recreational-vessels



MASTERS DECLARATION FOR FULL BIOSECURITY CLEARANCE

The vessel master or person in charge of a vessel that has arrived in New Zealand and intends to remain in New Zealand territorial waters (12 nautical miles) for an extended period of time and/or visit any area that is not a Place of First Arrival must complete this declaration, including the attached table of risk goods. You are required to declare, in the **ATTACHED TABLE OF RISK GOODS (Page 3)**, all the following on board: risk food, any plants, plant and animal products or artefacts, and any used equipment that is not part of the vessel.

MASTER (PERSON IN CHARGE ON BOARD)

Given name	<input type="text"/>	Family name	<input type="text"/>
Full name of vessel	<input type="text"/>	Name of arrival port	<input type="text"/>
		Date	<input type="text"/> / <input type="text"/> / <input type="text"/>

SECTION A – THE VESSEL

Has the vessel come directly to a MPI approved Place of First Arrival¹ (e.g. Opuā, Marsden Cove)?

Yes ☐ No ☐

Refuse/Garbage: Do you have any refuse/garbage?

Yes ☐ No ☐

Is this secured on board at all times after entering and in New Zealand Territorial waters?

Yes ☐ No ☐

Live Animals: Are any live animals kept on board such as dog(s), cat(s), fish or birds?

Yes ☐ No ☐

If **YES**, describe the type, number and origin of all animals in the **ATTACHED TABLE OF RISK GOODS (Page 3)**

Pest-type Organisms: Have you seen any evidence of pest-type organisms on board during your voyage to NZ including termites, ants, other insects, spiders, or vermin?

Yes ☐ No ☐

Has your vessel, prior to your voyage to NZ, been infested with any pest-type organisms?

Yes ☐ No ☐

If **YES** to either of the above, describe type of pests and any preventive actions or documentation of treatments undertaken in the **ATTACHED TABLE OF RISK GOODS (Page 3)**

Declaration on Hull Fouling²:

When and where was the vessel's hull last antifouled?

Country Date / /

When and where was the hull last cleaned of all biofouling?

Country Date / /

Has the vessel been stationary for >10 days since the last hull cleaning?

Yes ☐ No ☐

SECTION B – RISK GOODS ON BOARD

Q1: You are required to declare, in the **ATTACHED TABLE OF RISK GOODS (Page 3)**, all the following on board: risk food, any plants, plant and animal products or artefacts, and any used equipment that is not part of the vessel.

Complete **ATTACHED TABLE OF RISK GOODS (Page 3)**

Q2: Have you declared and surrendered all risk goods described in the **ATTACHED TABLE OF RISK GOODS** to the Inspector?

Yes ☐ No ☐

SECTION C – DECLARATION

To the best of my knowledge and belief the above statements are true and correct in every particular and I am fully aware of the provisions of the Biosecurity Act 1993 sections 18 and 19 (**see Page 2**). (Knowingly giving false or misleading information or failing to provide information required by law is an offence.)

Date / / Time Master's signature

FOR OFFICIAL USE ONLY

☐ Full biosecurity clearance given

Date / / Time Inspector

☐ Further biosecurity direction/actions required

Date / / Time Inspector

¹ See list of all places and what vessel types they are approved to accept at: <http://www.biosecurity.govt.nz/regs/ships/ports-first-arrival>

² Questions on biofouling relate to the new biofouling requirements for all vessels arriving into New Zealand. A vessel with a fouled hull will likely lead to directions from MPI to treat the vessel at an MPI approved Transitional Facility, or move the vessel. See more at <https://www.mpi.govt.nz/importing/border-clearance/vessels/arrival-process-steps/biofouling/biofouling-management/>



BIOSECURITY ACT 1993

18. Arrival of craft in New Zealand

- (1) The person in charge of any craft that arrives at a place in New Zealand—
- (a) shall, if—
- (i) the person has not notified the Director-General under section 17; or
 - (ii) the place is not the port or destination notified (or, as the case may be, last notified) under section 17,—
- give the Director-General notice of where and (approximately) when the craft arrived; and
- (b) shall prevent risk goods from leaving the craft without the permission of an inspector.
- (2) The person in charge of any such craft shall, if so required by an inspector, pay a bond for such amount not exceeding \$10,000 as the inspector may require to secure due compliance with subsection (1)(b).

19. Persons in charge of certain craft to obey directions of inspector or authorised person

- (1) This section applies to a craft, and place in New Zealand, if—
- (a) The craft arrives in New Zealand there; or
- (b) The craft is carrying risk goods that it was carrying when it arrived in New Zealand at some other place.
- (2) Where this section applies to a craft and place, the person in charge of the craft shall—
- (a) Obey every reasonable direction given by an inspector as to—
- (i) The movement of the craft in the place; or
 - (ii) The unloading or discharge of risk goods or the disembarkation of crew or passengers from the craft; or
 - (iii) Measures (including any bond required under section **18(2)** of this Act) to ensure that any risk goods not intended to be unloaded or discharged from the craft are maintained in a secure place under the control of that person; and
- (b) Within the required time or times, deliver to an inspector a report, in such manner and form, and containing such particulars verified by declaration, and with such supporting documents, as may be required; and
- (c) Answer all questions relating to the craft or its cargo, crew, passengers, stores, or voyage, asked by an inspector;—
- and every person disembarking from the craft shall, on request by an inspector, make his or her baggage available for inspection by the inspector.

Privacy Statement

Information sought on the New Zealand Master's Declaration and associated crew and passenger lists for arriving crafts is required to administer the Biosecurity Act 1993 (the Act). Collection of this information is authorised by s19 of the Biosecurity Act and failure to provide information may be an offence under the Act. The Ministry for Primary Industries (MPI) will not disclose any personal information unless it is in accordance with New Zealand law.

The Privacy Act 1993 provides rights of access to, and correction of, personal information held in readily retrievable form. Should you wish to exercise these rights please contact MPI on telephone number 0800 00 83 33.

BIOSECURITY ACT 1993 Sections 18 and 19
MASTERS DECLARATION FOR FULL BIOSECURITY CLEARANCE
– TABLE OF RISK GOODS



Full name of vessel

Date of arrival

 / /

Use this table to declare all risk goods to the Inspector. You can declare risk goods by **circling** the examples provided or **writing any risk goods** in more detail in right-hand column including any not listed in the examples.

On completion return to **SECTION B Q2.**

EXAMPLES OF RISK GOODS CIRCLE THOSE YOU HAVE ON BOARD	DETAILS LIST ANY ADDITIONAL RISK GOODS ON BOARD OR FURTHER DETAIL
Live animals including – Domestic cats, dogs, fish or birds – list type, number, origin	
Pest-type organisms on board including – Termites, ants, beetles, other insects, spiders or vermin LIST TYPE OR EVIDENCE SUCH AS DROPPINGS, NESTS, AND ANY PREVENTATIVE ACTIONS TAKEN OR DOCUMENTATION OF TREATMENTS IF AVAILABLE	
Food products including – Fresh, frozen, commercially processed or packaged, canned or vacuum-packed Meat – beef, pork, mutton, goat, lard, amphibian, reptile, poultry (chicken, duck, turkey) Small goods – salami, mortadella, various sausages, ham, prosciutto Fish products – salmon, trout, caviar, shellfish, crustaceans Eggs and egg products – fresh, freeze-dried, mayonnaise Honey and honey products – royal jelly, bee pollen, beeswax Dairy products – e.g. butter, milk, cheese Non-commercially packaged food Home processed meals – cooked frozen passage meals or preserved/cooked in glass jars or other packaging Fresh fruit – e.g. apples, pears, plums, oranges, mandarins, lemons, limes, bananas, mangoes, various melons, e.g. watermelons, paw paws, pineapples, grapes, berry fruits, e.g. strawberries Fresh vegetables – e.g. potatoes, kumara, squash, pumpkins, garlic, ginger, eggplant, onions, carrots, cabbage, chokos, peas, broccoli, cauliflower, sweetcorn, radish, zucchinis, cucumbers, capsicums, lettuce, green salads, green beans, tomatoes, coconuts, fresh sprouts, fresh herbs Stored products on board Dried cereal seeds – wheat, barley, rye, popcorn, oats, millet, poppy, quinoa, sesame, chia, rice Dried legume seeds – various beans, lentils, chickpeas, peas Unprocessed whole nuts – walnut, pecan, macadamia, peanuts, pistachio, chestnuts, brazils Dried items – e.g. chillies, citrus peel, bay leaves, lycium berries	
Plants and other plant products including – Nursery stock – live plants, cuttings, bulbs and growing media including soil Seeds for sowing or sprouting – e.g. beans, lentils, brassicas, alfalfa, clover, flowers, vegetables Fresh or dried cut flowers – e.g. floral arrangements, leis, potpourri, lavender Dried plant – e.g. grasses, kava root	
Other potentially harmful organic items including – Sea shells – e.g. clam, queen conch, coral Whale bone, animal skins or hair, feathers, raw bone Wood carvings, bamboo or straw items	
Used equipment including – Tents, bicycles, motorbikes, vacuum cleaner Sporting goods – e.g. golf gear, footwear, scuba gear Fresh water fishing – e.g. fly tying material, waders Equipment or medical items used with animals	



PROUDLY
MADE IN
NEW ZEALAND



OFFSHORE CRUISING TENDERS

THE NEW GENERATION IN CRUISING TENDERS

(OC300 Featured model). Custom sizes include 270, 300, 330 and 350



LIGHT



DRY



DURABLE



STABLE

✉ P0 Box 101, Paihia 0200, Bay of Islands, New Zealand ☎ +64 9 974 6745 ☎ +64 22 34 22 027

📘 /octenders @ info@octenders.com 🌐 octenders.com



Burnsco is the biggest seller of marine and motorhome accessories in New Zealand.

We stock over 10,000 products. It's a huge range - marine electronics, safety gear, fishing tackle, kayaks, anchoring, clothing, marine paint, plumbing, electrical and lighting, yacht fittings and much more. So the chances are that you'll find what you need at Burnsco. And if they haven't got it, they can get it for you - fast! With 15 stores around the country, we're your one stop boating and RV shop.

15
Stores
+ Webstore!



**Paint and
Maintenance**



Fishing



Electronics



Clothing



Safety

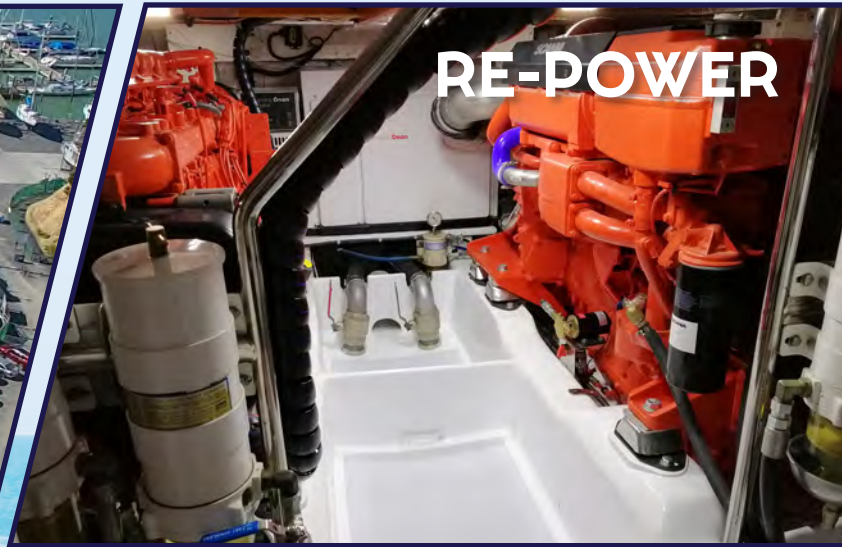


BLUEFIX

www.bluefixboatworks.co.nz BOATWORKS

Boat Builders | Engineers | Marine Painters | Opuia

Bluefix Boatworks have New Zealand's best team of boat builders, marine painters and engineers, based in a world class refit facility in the Bay of Islands Marina Boat Yard, Opuia, New Zealand.



- New boat building + full boat refit • Re-paints + paint touch ups • Marine Engineering
- All general boat maintenance + boat repairs • Insurance work • Boat window leaks + window replacement • Rot removal + composite repairs • Keels + rudders • Boat interior fit - out + cabinet making • Custom tuna tubes + bait boxes • Teak decks • Polishing work
- Project management • NorthCape Series, design and build



BLUEFIX

www.bluefixboatworks.co.nz BOATWORKS

Boat Builders | Engineers | Marine Painters | Opuia

BRAD & CHARLOTTE ROWE

Bay of Islands Marina Boat Yard, Opuia New Zealand

P: 09 402 6814

E: info@bluefixboatworks.co.nz

www.bluefixboatworks.co.nz

Why sell your boat in New Zealand?

36°
BROKERS

Every year we get a steady stream of enquiries from offshore cruisers who are contemplating the sale of their boat.

One question asked of us most often is simply "will New Zealand be a good place to sell my boat?".

We've collated a list from our experience, covering just some of the reasons why this country at the bottom of the world is a great spot to put your boat on the market.

1. Location

New Zealand in itself is a prime cruising destination. There's plenty of coastline and heaps of gorgeous cruising grounds. It can be an appealing option for overseas buyers wanting to pick up their boat in New Zealand and explore the surrounds before heading elsewhere.

2. Calibre of buyers

As a nation of keen recreational and competitive boaties there's always people on the lookout for specific builds and purpose-built offshore cruising boats. Boats situated in New Zealand attract both a local and global market. Buyers can also view with confidence knowing that vessels are presented in their best shape, serviced by Kiwi contractors and marine companies.

3. Quality of services

Buyers love knowing what work has been carried out to maintain and upgrade their potential boat, and work carried out in New Zealand is held in very high regard.

Service experts will often include highly experienced America's Cup campaign workers, as well as people who have worked on high profile campaigns over the years in boat-building, mechanical, design, sail-repair, canvas work and rigging departments. A boat which has had a thorough rig and hull check, with any work required completed as well as a sound inspection of the keel and rudder is more likely to draw interest than those that sell as-is.

4. Base for Pacific Island cruising

One of the popular circuits which can appeal to buyers wanting to pick up from New Zealand starts from April/May, and heads up to Tonga, across to Fiji, then to Vanuatu, New Caledonia, and back to New Zealand. This cruising triangle is common for New Zealand based yachts, and the Island Cruising Association has organised rallies along this route in previous years.

5. Secure place to leave your boat

Whether you're ready to sell now, or wanting to simply test the waters, New Zealand offers a safe and secure place to leave your boat while working through the process. We've found many people will come in on a TIE, fly home for Christmas, then return in the New Year with plans firmed up for their boat.

The Opuia branch of 36° Brokers is superbly situated to welcome cruising vessels into the marina. Local broker Robbs is always up for a coffee and a chat, so be sure to pop up to our office on the wharf to talk through your options. To make contact beforehand, please email robbs@36degrees.nz or call directly +64 21 858 897.

For further information visit www.36degrees.nz, email info@36degrees.nz or phone +64 9 903 1001.



Marine services / Transport



The BoatYard
Vava'u - Tonga
Secure hardstand yacht storage for your South Pacific cruising adventure

LONG TERM STORAGE
SHORT TERM STORAGE
REPAIRS & MAINTENANCE
LIVEABOARDS WELCOME



Contact us now to find out more about hauling your boat in the cruising grounds of Vava'u

www.boatyardvavau.com info@boatyardvavau.com



Clean below? Good to go!

Clean hulls stop the spread of marine pests. Make sure you know the rules for where you're cruising - visit www.marinepests.nz



Northland
REGIONAL COUNCIL
Te Kaunihera ā rohe o Te Taitokerau



Tauhara Electronics

*Service, Installation and Fault Finding
in all Major Brands of*

Marine Electronics

Raymarine Specialist



Hans

www.tauhara.com
hans@tauhara.com
+6422-3072563



p. + 64 9 402 5511
m. + 64 27 480 599
e. bayofislands@radcarhire.co.nz

www.radcarhire.co.nz

Ask about our November special.

**Located at the
Bay of Islands Marina carpark.
Ring Wayne to book your vehicle.**

CALL FREE 0800 73 68 23

Marine services



opuacanvas
AUTO & MARINE TRIMMERS

100%
locally
owned and
operated

Opua Canvas Auto & Marine Trimmers will custom design and fabricate any marine, residential or commercial canvas or PVC product to meet your needs.

The team at Opua Canvas will take the time to give you just what you require whether it be canvas, upholstery, sails or retail product for your very own special project. Whether it is a simple repair or a major overhaul we pride ourselves on quality workmanship, great customer service and only the best products. All work undertaken is carried out in our premises on the Marina at Port Opua. Front row of buildings close to Ashby's boatyard.

We are the Professional Marine Trimmers of Opua.










Opua Canvas Auto & Marine Trimmers | Unit 11, Opua Marine Park, Baffin St, Opua
Ph: 09 402 8904 | To find out more visit www.opuacanvas.co.nz



TRANS MARINE
Sustainable Solutions for Sailors
p. +64-27-932-6815



Solar Solutions
Northland

Trans Marine Pro and Solar Solutions Northland powering cleantech revolution by providing renewable energy sources for marine, land based and mobile homes.



























Trans Marine Pro



p. +64-27-932-6815 info@transmarinepro.co.nz www.transmarinepro.co.nz Opua, Bay of Islands, New Zealand

Hospitality & Liquor sales

	<p>Your Friendly Local for everything</p> 	
<p>Fresh Fruit & Vegetables</p> <p>Postal Agency - Letters, Parcels, Poste restante.</p> <p>Sim Cards - All the New Zealand Carriers</p> <p>Lotto Outlet - Gotta be in to Win!</p> <p>Bike Hire - Explore the Twin Coast Cycle Trail</p> <p>Fishing - Tackle, Bait, & Ice</p> <p>Catering - for any event around the Marina or BOI</p>	 <p>Great Range of Groceries - For Home or provisioning the boat.</p> <p>Beer, Wine, Cider - Local and International brands.</p>	<p>Well Stocked Delicatessen</p> <p>Hours - 7 days a week 6.30am - 7pm (Summer) 6.30am - 6pm (Winter)</p> <p>Contact us - +64 9 402 7575 admin@opuastore.co.nz</p> <p>Follow us on Facebook @theopuageneralstore</p>
 <p>Delicious Bread and Pastries baked onsite daily</p>	<p>World Famous in Opuia - Pizzas! Most evenings - call to check availability</p> <p>ATM - Accepts International Credit Cards</p> <p>Friendly advice on the area and what to do</p>	 <p>Great Coffee & Delicious Food</p>



Racing BBQ Cruises Live Music Bar Bistro Visitors Welcome	
<p style="text-align: center;">WELCOME TO OPUA! <i>While you're here why not JOIN THE CLUB!</i></p> <p>The Opuia Cruising Club is a friendly yacht club right on the Opuia Waterfront.</p> <p>Benefits of being a club member include</p> <ul style="list-style-type: none"> - Discounts on food and drink at the bar and bistro. - Use of the club dock - Free printed events calendar - Discounts with local retailers - Comfortable Club rooms and deck area to relax in 	 <p style="text-align: center;">Meet other yachties and explore the Bay of Islands on one of our BBQ cruises</p>
 <p style="text-align: center;">Enjoy Dinner and Drinks overlooking the anchorage</p>	 <p style="text-align: center;">Join one of our boats in a club race or race your own</p>
e: info@opuacruisingclub.co.nz ph: 09 402 6924 w: www.opuacruisingclub.co.nz f: Opuia Cruising Club	

OPUA BOATBUILDERS LTD

Expertise in all aspects of boat repair

- ✦ Fibreglass repairs and alterations
- ✦ Rot repairs
- ✦ Hatches & window replacements
- ✦ Installation of thru hull fittings
- ✦ Teak decks
- ✦ Acrylic and plywood sales



Unit 5, 15 Baffin Street, Opua
Phone Graeme: 021 236 1721

SUPER YACHT SHORESIDE SUPPORT



- Interior upgrades
- Cellar Selection - liquor supply
- Provisioning
- Luxury vehicle rentals
- Brokerage & finance
- Luxury experiences & product

P: Penny +64 218 74 304
E: penny@nzluxurymarine.co.nz
www.nzluxurymarineservices.com


NZ LUXURY MARINE
SERVICES



Port Opua | New Zealand
www.multihullcentral.com

Multihull Central is one of the fastest growing multihull brokerages in New Zealand, Oceania and throughout the South Pacific. We specialise in selling cruising catamarans and have locally and internationally an invaluable amount of boating, business and professional experience amongst our team. In sales and marketing we strive for innovation and results.

With a database of over 25,000 contacts, 1,500 multihull owners, and a network of global marine resources, we are highly efficient in sourcing buyers in the toughest of markets and are renowned for achieving strong resale results in better than average selling times. In fact, in a recent global report into average boat selling times, Multihull Central sold boats more than a month faster than the global average.

Multihull Central can offer advice on customs, vessel deliveries, caretaking and maintenance, including professional marine related trades.



Bay of Islands Marina

All enquiries: opua@multihullcentral.com





Information

Russell Radio 2M/H3/D

Ph/Fax (09) 403 7218
russell.radio@outlook.com

VHF Channel 63 and Channel 3 – operating 09:00 – 19:00, 7 days a week.

Daily weather forecasts at:
09:00, 11:30, 13:00, 15:00, 17:30 and 18:50 on channel 63.

Russell Radio is also available for information on services – medical facilities, petrol & diesel outlets, phone numbers etc. They are contactable from Tutukaka in the South to Doubtless Bay in the North and extending 50 miles seawards.

They are also able to update Customs and MPI of your arrival time at Opuā, Whangarei or Auckland.



*We have Cars/People Movers/SUV
and Mini buses for rent*

*Pickup and Drop off at Auckland
Airport is available*

Very competitive rates

*We are located behind the Customs
Building at Opuā Marina*

Lets see the sites!!



Call 0800 670083

**Email: info@farnorthrentals.co.nz
www.farnorthrentals.co.nz**



MARINE REFRIGERATION & AIR CONDITIONING

We have over 25 years experience in the Bay of Islands servicing fishing boats to luxury yachts.

12v-24v - off engine - 110v-230v systems

Isotherm - Frigoboard

Minor repairs to major refits.

Northfreeze Refrigeration

Opuā, New Zealand

p. +64 9 402 7094

e. northfreeze1@outlook.com

w. www.northfreeze.co.nz



Marine services



Northland Spars and Rigging are one of NZ's leading suppliers of mast and rigging services. We provide marine services to local and overseas yachts in Northland and have the only full service rigging shop in the Bay of Islands Region. Our experienced team offer expert mast and rigging solutions; supplying everything from a complete refit, through to a simple rig check and tune up.

Our in-house naval architect, and talented boatbuilding team can build you a custom vessel.

Opua Marine Park #2 Baffin Street

P: +64 (0)9 402 6280

M: +64 (0)27 332 2381

www.sparsandriggering.com

Rig Inspections

Headsail & Mainsail Furling

All Things Masts and Rigging

Aluminium & Carbon Spinnaker Poles

Lazyjacks and Lifelines

Halyards – Special Colours available,
even on short lengths

Aluminium and Stainless Steel
fabrication and repairs

Offshore Gooseneck fabrication is a shop specialty

DIY – See us for expert advice & quality parts



Fresh Water, Pure and Simple

ENGINE DRIVEN SYSTEMS 80-240 LITRES PER HOUR

240/120 VOLT AC SYSTEMS 80-240 LITRES PER HOUR

12 VOLT DC LOW CURRENT 35 LITRES PER HOUR

12 VOLT DC HIGH OUTPUT 70 LITRES PER HOUR

WE ALSO SERVICE OTHER MANUFACTURER'S WATERMAKERS

AND DO MEMBRANE REPLACEMENTS

openocean@xtra.co.nz 18 Baffin Street, Opua

Phone +64 9 402 8449

www.openoceanwatermakers.co.nz



Bay of Islands Booking Office
Corner Williams & Marsden Roads, Paihia
P: 0800 365 744 | exploregroup.co.nz



- Waitangi, Haruru Falls, Mangrove Walk**
1.5hrs one way
- Opua Coastal Walk** 2hrs one way
- Paihia Lookout Track** 30mins one way
- Paihia to Waitangi Treaty Grounds** 30mins one way
- Paihia to Oromahoe Rd** 2.5hrs one way
- Flagstaff Hill Walk** 30mins one way
- Bay of Islands Coastal Walk** 5hrs return

- Te Tii Waitangi Marae**
- Waitangi Treaty Grounds**
- Church**
- Police P: 402 7130**
- Supermarket**
- Service Station**

- Duke of Marlborough**
- Museum**
- Pompallier House**
- Church**
- Toilets**
- Doctor**

Passenger ferry timetable

Paihia - Russell - Paihia

Paihia to Russell

7:20am	12:30pm	5:30pm
8:30am	1:30pm	6:30pm
9:30am	2:30pm	7:30pm
10:30am	3:30pm	8:30pm
11:30am	4:30pm	9:30pm
		10:30pm*

Russell to Paihia

7:00am	12:00pm	5:00pm
7:45am	1:00pm	6:00pm
9:00am	2:00pm	7:00pm
10:00am ^(w)	3:00pm ^(w)	8:00pm
11:00am	4:00pm	9:00pm
		10:00pm*

(w) Drop off at Waitangi available on request
*October to May only

Freephone 0800 653 339

Vehicle ferry timetable

Opua - Okiato - Opua

Okiato to Opua

First ferry 6:00am
Last ferry 9:50pm

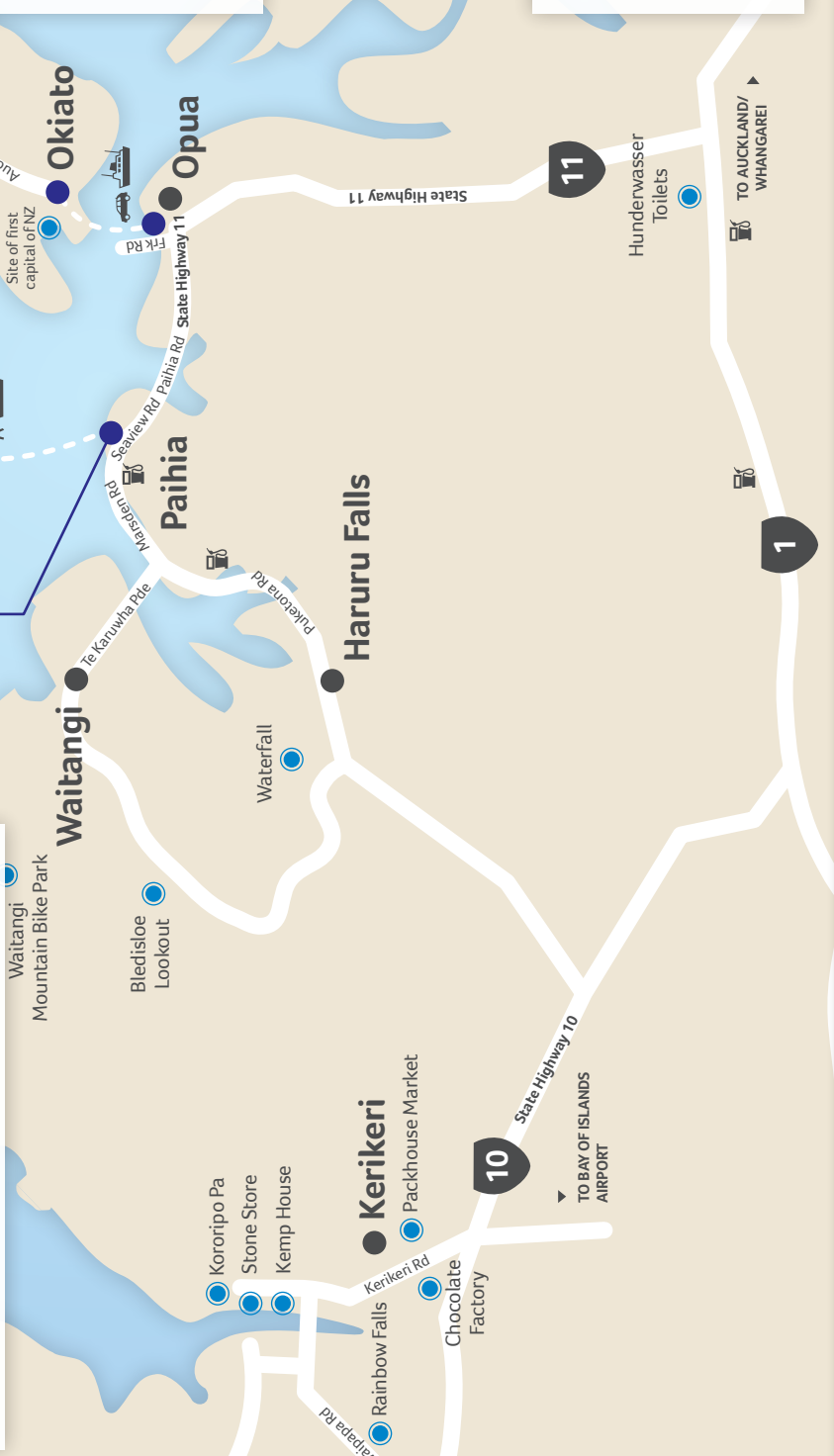
Opua to Okiato

First ferry 6:10am
Last ferry 10:00pm

Ferry operates approximately every 10 minutes.
Suitable for all vehicles including trucks, buses and campervans.
No reservations required. Tickets are purchased on board with cash, Eftpos, Visa, American Express or Mastercard.

Key

Useful numbers	
Bookings/Departures	111
Emergency number (Fire, Ambulance, Police)	
Tourist must see	09 438 8050
Vehicle ferry	
Passenger ferry	09 402 7421
Service station	





Bay of Islands Must do

Every cruising region has one, the perfect spot, and the one place you simply can't miss if you are visiting the area and have limited time, the **"must do"** destination.

Now picking the "Must do" spot in some places is hard work, in the Bay of Islands there are so many places we love. But when I was asked for the destination that would have the widest appeal, was easy to get to, had no nasties on the approach and lots to do, it had to be Roberton, also known as Motuarohia Island, it's quintessential Bay of Islands.

Roberton is the first island sighted as you come around Tapeka point after leaving the Russell, Paihia area. Distinguished by its two glorious lagoons Roberton is perhaps the most photographed scene in the Bay. The anchorage on the south side has good holding on a sand bottom when set, depths vary from 3m to 15m. The approach is clear although a sand rise to the east of the main bay can give you a scare with depths as little as 2.5m at low tide 300m out from the point. If you beat the Auckland rush over the Christmas break you can get a good feed of Scallops here with a snorkel.

Motuarohia Island features a number of archaeological sites including pa, terraces, pits, and gardening lines around the central lagoon area. There is also a well designed snorkel trail put down by Department of Conservation (DoC) in the central lagoon, best done at high tide it will take you about half an hour with underwater signs explaining all aspects of the sea life in the lagoon.

The island also has significant cultural significance. Cook visited Motuarohia anchoring off Cook's Cove in 1769. In 1839, Motuarohia became known as Roberton Island. A sad story of death and retribution surrounds Roberton's family which led to the first hanging in NZ.







BAY OF ISLANDS MARINA SERVICES

We'll be there to meet you and answer any questions you might have, but we've put together this handy map and list all of the services available at the marina to make things even easier for you during your stay with us.

- | | | |
|--|---|---|
| 01. Opua Wharf (marina & commercial berths) | 11. New Zealand Customs | 21. Total Yacht Care |
| 01. R Tucker Thompson | 11. Gulf Group Brokers | 21. Northfreeze |
| 01a. Opua Wharf Pontoon | 11. Toilets / Showers | 21. Marine Electrics |
| 02. Trans Marine Pro | 12. Burnsco | 21. Opua Boat Builders Ltd |
| 02. Moorings Northland | 13. Breakwaters (x2) | 21. Opua Marine Engineering |
| 02. Fair Wind Charters | 14. Carparks | 21. NZ Stainless Cleaning |
| 02. 36° Brokers | 15. Opua School | 21. North Sails |
| 02. Opua General Store | 16. Bay of Islands Marina Office | 21. South Pacific Marine Canvas |
| 03. Total Marine Services | 16. Laundromat | 21. Far North Holdings |
| 04. Opua Cruising Club | 16. Marina Café | 22. Total Engineering |
| 05. Quarantine Dock | 16. Bay Insurance / Multihull Central | 23. Open Ocean Watermakers |
| 06. Fuel Dock | 16. Visitors Lounge / Toilets / Showers / Media Office | 23. FNHL Maintenance Division |
| 06. Sewerage pump out | 17. Boat Ramp | 24. Storage Units |
| 06. Water | 18. Dinghy Docks | 25. Bluefix Boatworks |
| 07. Intercity Group | 19. RaD Car Hire | 26. Bay of Islands Boatyard Office |
| 08. Northland Spars & Rigging | 19a. Stage/Pous | 27. Bay of Islands Boatyard Painters |
| 09. JB Marine | 20. Northland Regional Council (NRC) | 28. Bay of Islands Marina work jetty |
| 09. Opua Auto & Marine | 20. Seapower | 29. Hardstand |
| 10. Far North Rentals | 20. Opua Canvas | |
| 10. E Bike and Scooter Hire | 20. Cater Marine | |
| 10. Twin Coast Cycle Transport | 20. NSR Boat Builders | |
| 11. Ministry of Primary Industries (MPI) | | |

Medical

Important message from the New Zealand Ministry of Health

Kia Ora, welcome to New Zealand.

If you get **sick** within a **month** of arriving in New Zealand, please seek **medical advice** as soon as you can.

Telephone the **free** Healthline on **0800 611 116** or contact a doctor.

It is **important** to tell them that you have been **outside New Zealand** recently.



New Zealand Government

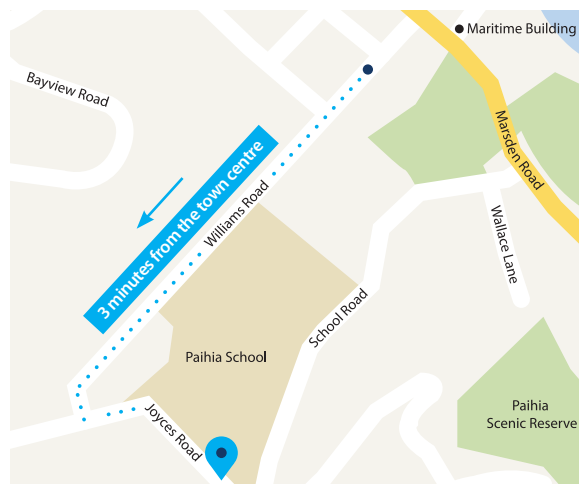
Free health advice
when you need it
Healthline
0800 611 116

August 2014 HP 5973

Your Local Paihia Dentists



See our friendly team for
all your **dental needs**.



1A Joyces Road, Paihia

LuminoThe Dentists

09 402 7714 | lumino.co.nz/paihia

Unichem⁺

Your local health professional

Orrs Pharmacy Kaikohe

For all your:

Prescriptions

First Aid Supplies

Travel Medicine Advice

Gifts & Toiletries

***FREE DELIVERY
TO OPUA MARINA***

34 Broadway, Kaikohe

Telephone: 09 401 0055

Fax: 09 401 0036

Email: kaikohe@orrs.co.nz

Your local health professional

Bay of Islands

Port Opua



Boatyard

New Zealand

Boat maintenance in paradise

World-class, high quality paint finishes.



FLOATING WORK BERTHS

Accommodating 20 boats up to 30 metres. Power and water to all berths.

TRAVEL LIFT

50 tonne capacity.
Maximum beam 5-2 metres.

HAULOUT TRAILER

60 ton capacity.
Maximum draft 2.3 metre, hauling Mono and Multi Hull vessels.

HARDSTAND

Sealed area for below water work.
56 Sites - short or long term.
Undercover workshop available.
Power and water to all sites.

ONSITE PAINTING

Total resprays, touch-ups.
Complete anti fouling services.

KITCHEN, ABLUTIONS, BBQ AND
PICNIC TABLES ON SITE.

CALL +64 9 402 7124
FOR A BOOKING OR MORE INFORMATION

40 trade services on-site

BAY OF ISLANDS MARINA

Unit 24, 7 Baffin Street - Port Opua - Bay of Islands, New Zealand
Ph: +64 9 402 7124 Email: enquiries@boimarina.co.nz

boimarina.co.nz



BUILT FOR ADVENTURE

Our expert sailors and sailmakers are committed to making your sailing more enjoyable - delivering durable, reliable and easy to handle cruising sails, every single time, allowing you to cruise with confidence.

We are your experts for all of your sails, service, covers and upholstery needs.

doylesails.com

Doyle Sails Northland
Opua Marina, Bay of Islands
New Zealand

Peter Boyd
peter.boyd@doylesails.com
+64 27 494 2492

